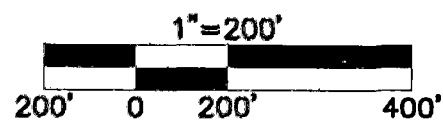


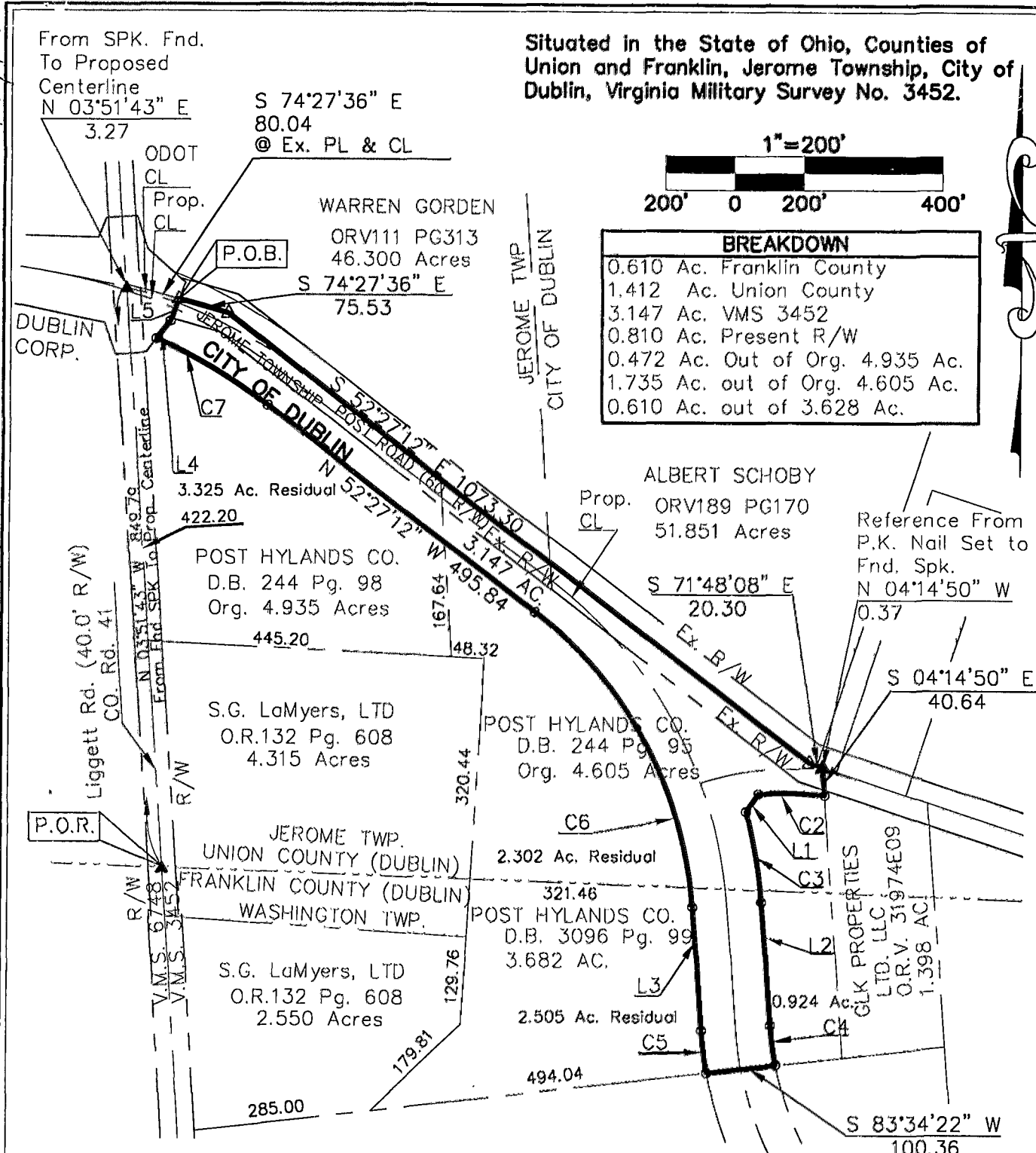
77857675

0-109-C
WAS Airing Toile T44

Situated in the State of Ohio, Counties of Union and Franklin, Jerome Township, City of Dublin, Virginia Military Survey No. 3452.



BREAKDOWN	
0.610 Ac.	Franklin County
1.412 Ac.	Union County
3.147 Ac.	VMS 3452
0.810 Ac.	Present R/W
0.472 Ac.	Out of Org. 4.935 Ac.
1.735 Ac.	out of Org. 4.605 Ac.
0.610 Ac.	out of 3.628 Ac.



NO.	DELTA	RADIUS	CH. BRNG.	DIST.
C2	17°16'04"	315.50	N 88°25'47" W	94.73
L1			S 34°06'44" W	32.09
C3	10°57'44"	700.00	S 09°55'54" E	133.72
L2			S 04°27'02" E	181.87
C4	07°21'24"	450.00	S 08°07'45" E	57.74
C5	06°22'35"	550.00	N 07°38'21" W	61.18
L3			N 04°27'02" W	181.87
C6	48°00'10"	600.00	N 28°27'07" W	488.11
C7	14°32'09"	750.00	N 59°43'17" W	189.76
L4			N 38°15'45" E	33.17
L5			N 21°16'10" E	33.89

▲ = R.R. Spk. Fnd.
 Δ = Gear Spk. Set
 ● = I.P. Fnd.
 ○ = I.P. Set
 I.P. Set are 3/4" I.D.
 Iron Pin 30" long with
 cap inscribed EDG.



CASTO AFFINITY LTD.
 Inst. No. 199712190171121
 40.108 AC.

This drawing was prepared by Environmental Design Group, Inc., Columbus, Ohio, from an actual field survey. The basis of bearing for this drawing is N 03°51'43" E for the westerly VMS Line of 3452 also being the centerline of Liggett Road (40.0' wide) (Co. Rd. 41).

Maynard H. Thompson
 Maynard H. Thompson, P.S. 7128
 Date 2/2/00

77857675

PROJ. NO:	474604
FILE NO:	PLT04
DRAWN BY:	MSP
CHKD. BY:	MHT

EDG
 ENVIRONMENTAL
 DESIGN GROUP
 ENGINEERS - LANDSCAPE ARCHITECTS - SURVEYORS
 9015 Antares Avenue
 Columbus, OH 43240
 Tel. 614 433 9018
 Fax 614 433 9313

PARCEL 18
 3.147 ACRES
 RIGHT-OF-WAY