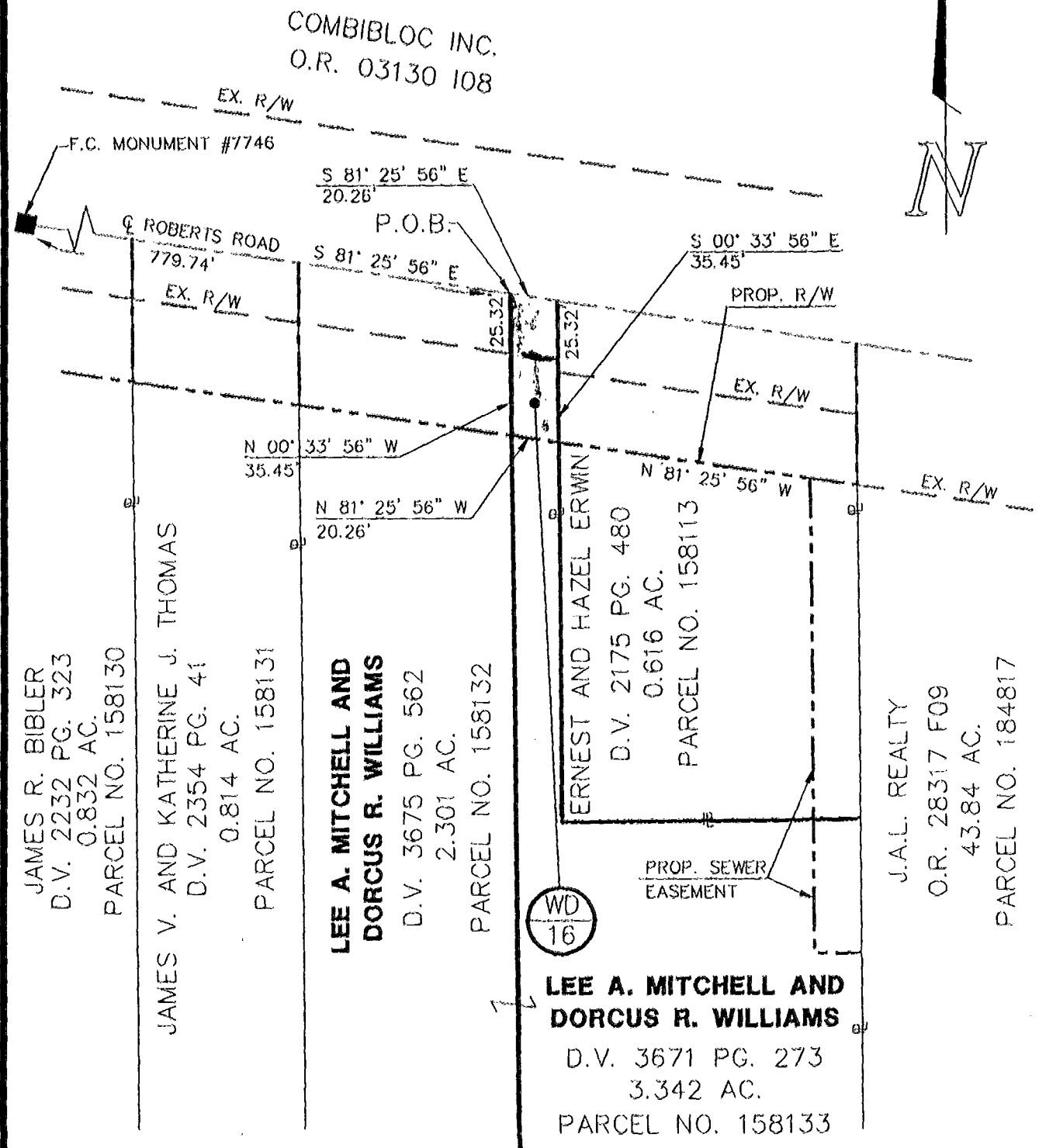


EXHIBIT A

Parcel 16WD



THE ABOVE DESCRIPTION AND THE BASIS OF BEARINGS ARE S 81° 25' 56" E FOR ROBERTS ROAD FROM A CENTERLINE SURVEY MADE BY PAUL K. MOORE AND ASSOCIATES, REGISTERED SURVEYOR NO. 5883, ON 12/21/93 FOR CONSTRUCTION DRAWINGS FOR GROUP 6 INTERSECTION IMPROVEMENTS, C.I.P. 077. THE PLANS ARE ON FILE WITH THE CITY OF COLUMBUS DIVISION OF ENGINEERING AND CONSTRUCTION, DRAWING 1476-E.

GROUP 6 INTERSECTION IMPROVEMENTS C.I.P. NO. 077		
DYNOTEC, INC. 2700 E. DUBLIN-GRANVILLE ROAD, SUITE 6 COLUMBUS, OHIO 43231		
DATE: 03/29/96	DWG NO. WD16	DRAWN: BBB
SCALE: 1" = 60'	CHECKED: NAC	

158132
 158131
 158130
 158113
 184817
 158133