

SURVEY OF ACREAGE PARCEL

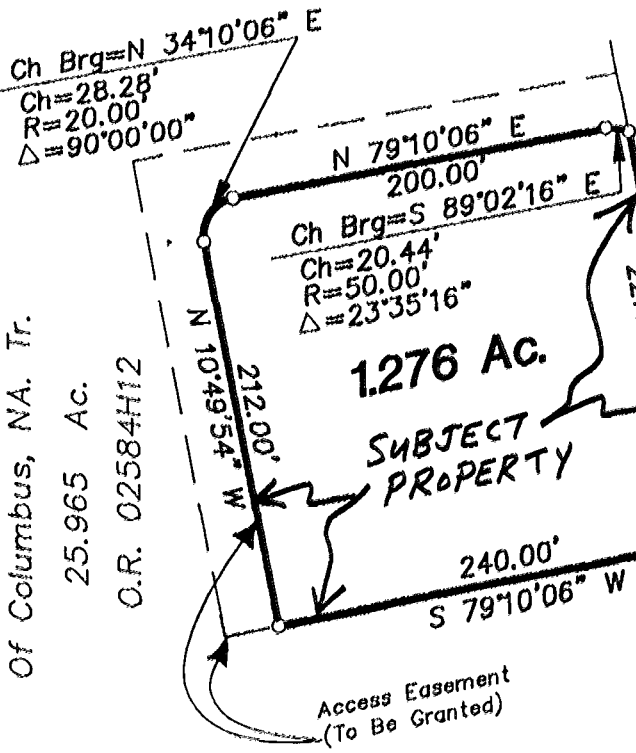
LOCATED IN VIRGINIA MILITARY SURVEY NO. 6641

CITY OF COLUMBUS, FRANKLIN COUNTY, OHIO

John J. Chester, David B. Roth
Richard J. Solove & Bank One
Of Columbus, NA. Tr.

25.965 Ac.

O.R. 02584H12



LEGEND

- ⊙ WATER VALVE
- ⊕ FIRE HYDRANT
- MANHOLE
- ⋯ LIGHT
- ⊥ CURB INLET
- IRON PIN SET

HILLIARD

ROME

ROAD



Surveyed & Platted
By

EVANS, MECHWART, HAMBLETON, & TILTON INC.

CONSULTING ENGINEERS AND SURVEYORS

170 MILL STREET

GAHANNA, OHIO 43230

614/471-5150

By Thomas D. Sibbalds
Thomas D. Sibbalds
Registered Surveyor No. 5908

SCALE 1" = 100'

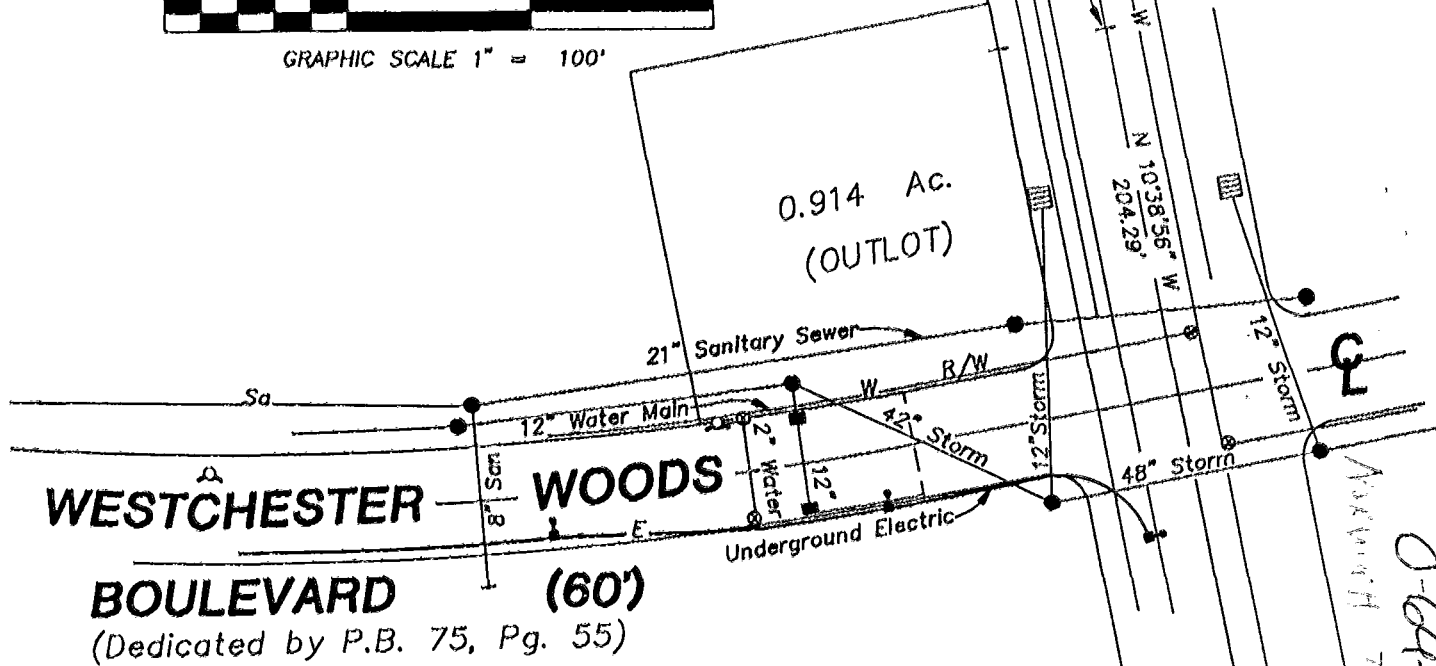
FEBRUARY 23, 1993

Revised April 13, 1993



GRAPHIC SCALE 1" = 100'

0.914 Ac.
(OUTLOT)



WESTCHESTER WOODS BOULEVARD (60')
(Dedicated by P.B. 75, Pg. 55)

NOTE:

The bearings shown hereon are based on the same meridian as the plat of record in Plat Book 75, Page 55.

EXHIBIT "B"
Page One of One

0-6641-2