

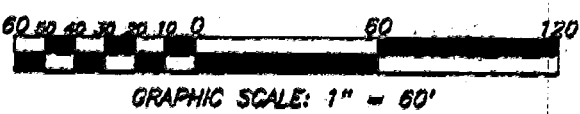
SCALE 1" = 60'

IRON PIN

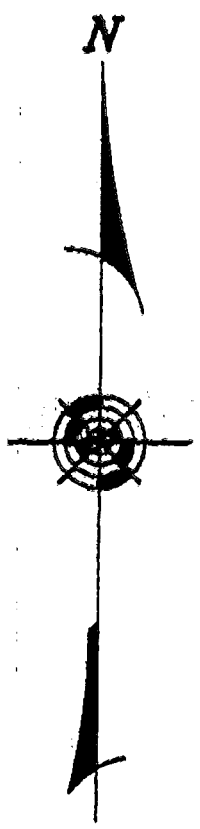
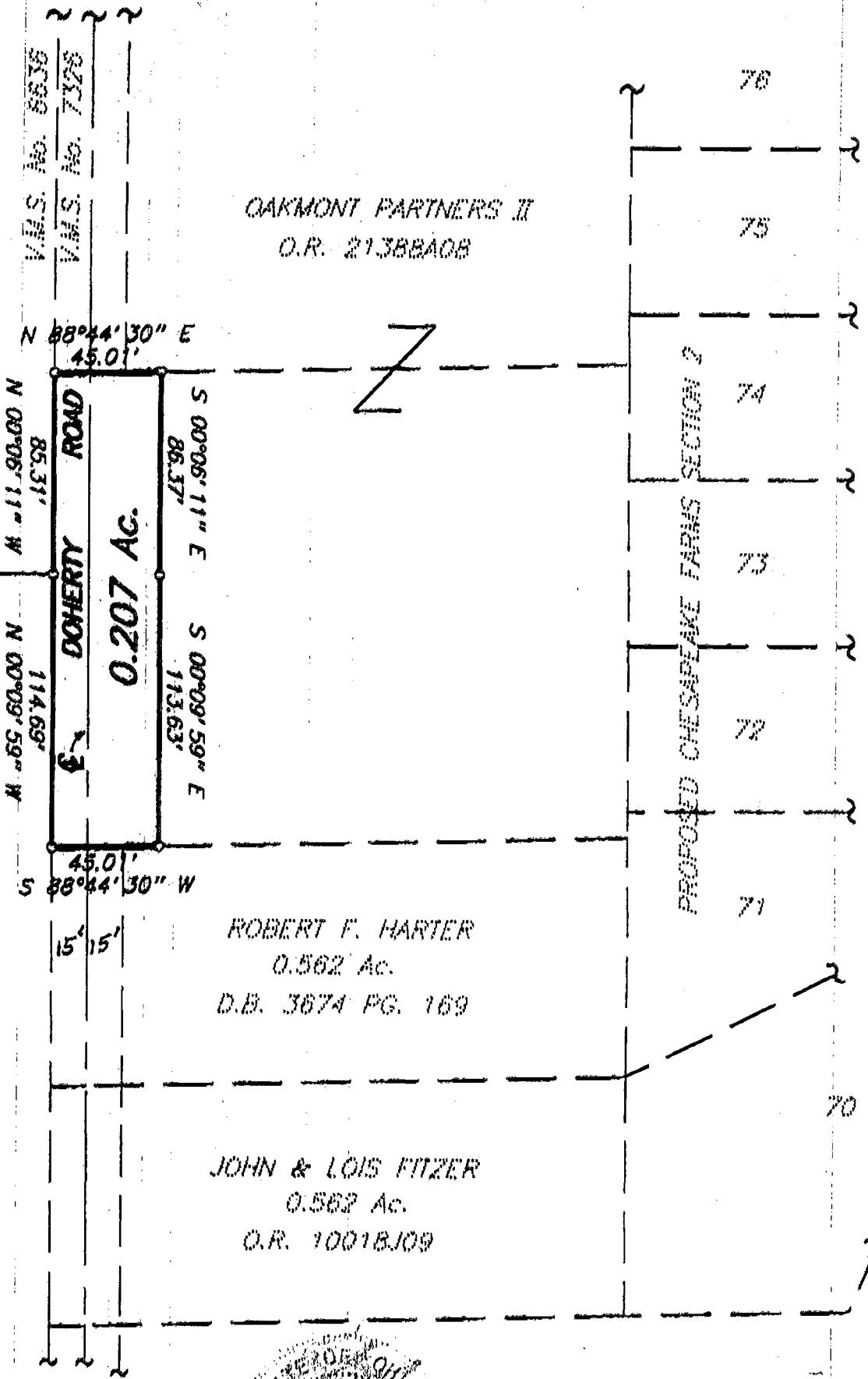
JULY 9, 1994

RECORD REFERENCES O.R. 21382A08

BASIS OF BEARINGS: The bearings are based on the same meridian as the bearings shown on the recorded plat of "The Village At Thornapple Section 1", Plat Book 75, Page 8, Recorder's Office, Franklin County, Ohio.



PERRY LAND COMPANY
 O.R. 144216



E.M.H.&T. INC.
 By Felix P. Brown
 Professional Surveyor No. 5581

75/6/2/52
 0-89-D