

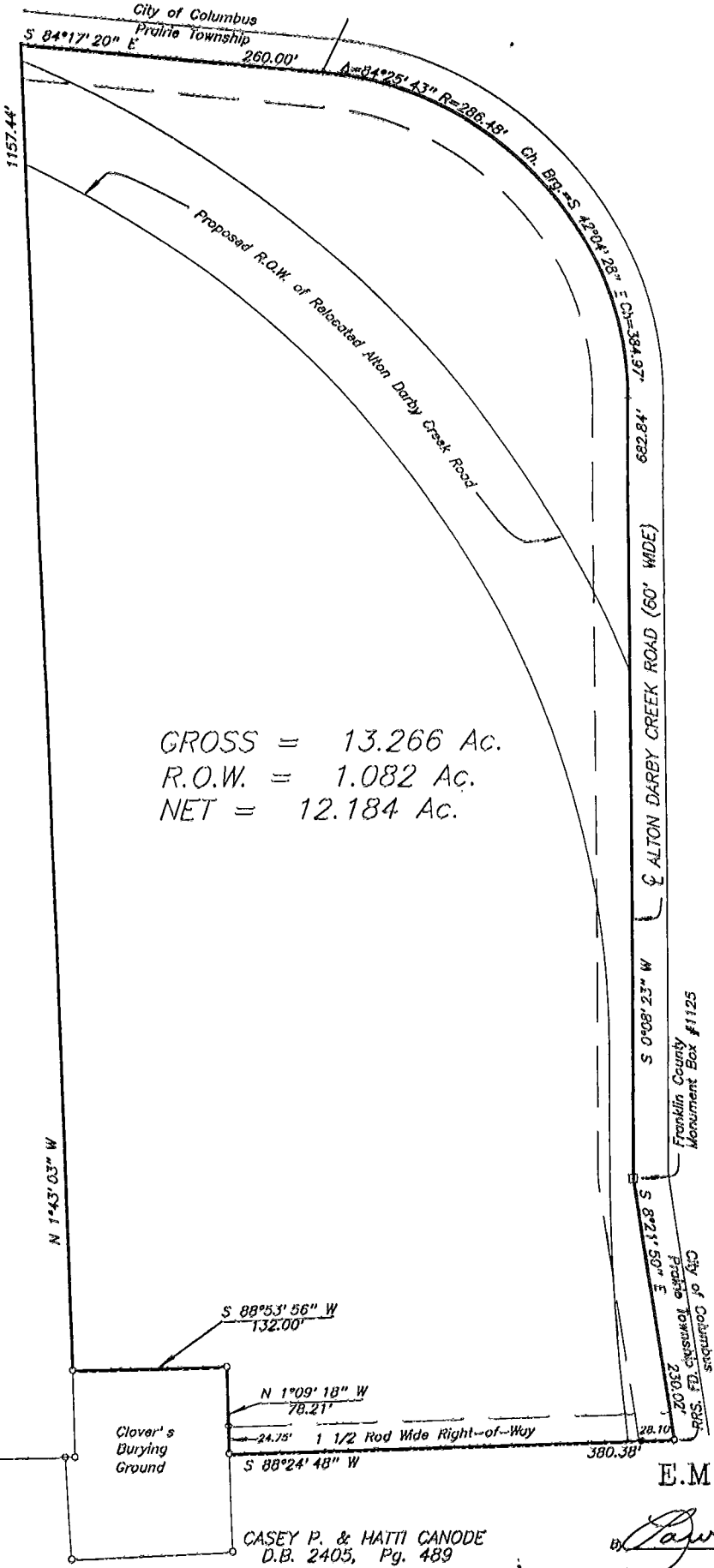
PLAT OF SURVEY
LOCATED IN VMS # 6636
TOWNSHIP OF PRAIRIE, COUNTY OF FRANKLIN, STATE OF OHIO



IP. FD. MAY 5, 1993 RECORD REFERENCES

THE VILLAGES AT THORNAPPLE
SECTION ONE
P.B. 75, Pg. 8

BASIS OF BEARINGS: The bearings shown hereon are based upon the bearings of record for the subdivision entitled, "The Villages At Thornapple Section One", of record in P.B. 75, Pg. 8.



BETH E. VALLO, ANNE M. WEBER, & BETH E. KIENLE
D.B. 3754, Pg. 190
OR 16315B16
OR 13800A01
OR 21146B16

GROSS = 13.266 Ac.
R.O.W. = 1.082 Ac.
NET = 12.184 Ac.



E.M.H.&T. INC.

Lawrence E. Ball
LAWRENCE E. BALL
Professional Surveyor No. 6878

797-101

0-89-C