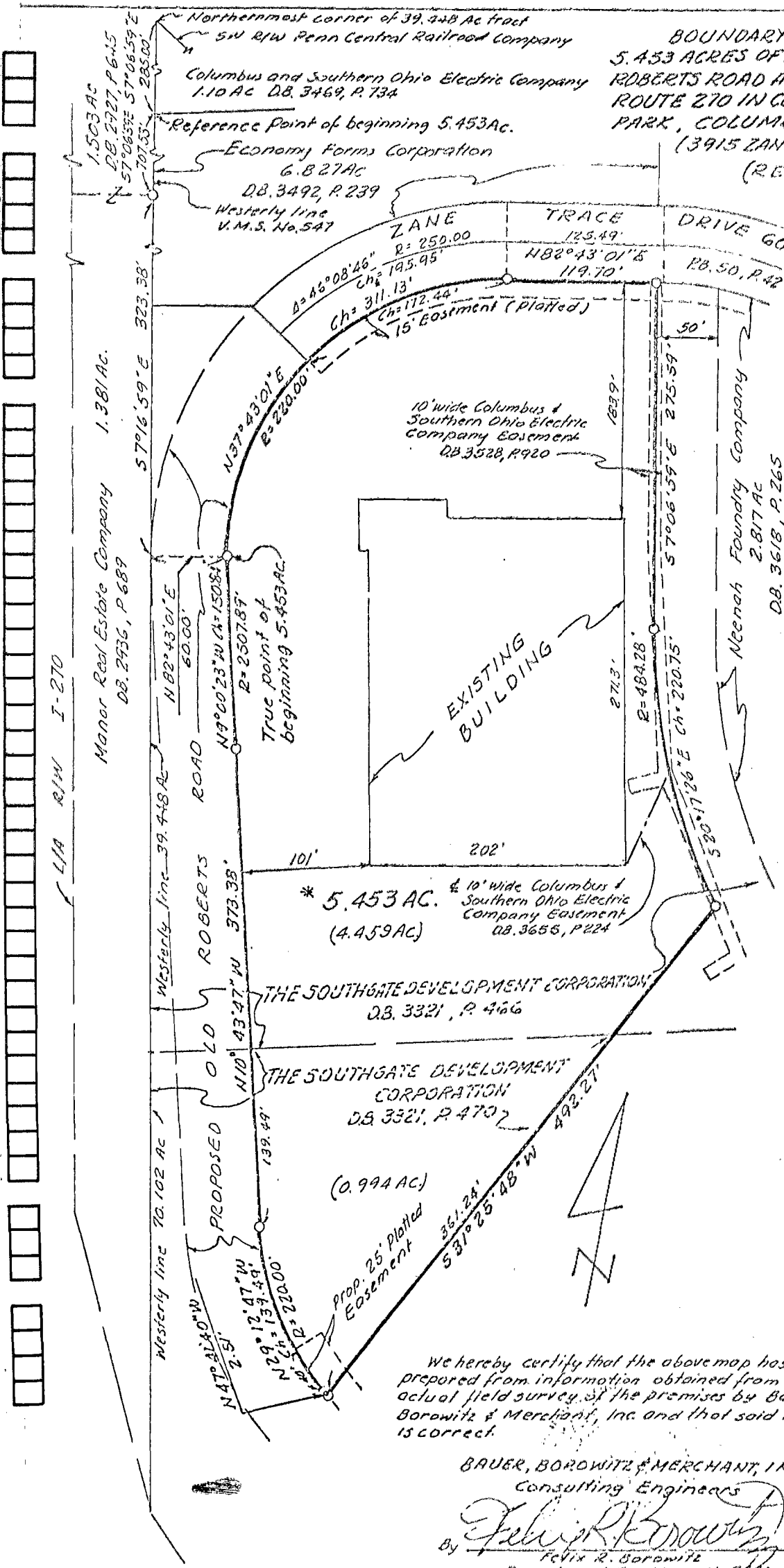


CONSULTING ENGINEERS

2507 1/2 NORTH HIGH STREET

COLUMBUS, OHIO 43202

BOUNDARY MAP OF
5.453 ACRES OF LAND NORTHWEST OF
ROBERTS ROAD AND EAST OF INTERSTATE
ROUTE 270 IN COLUMBUS CORPORATE
PARK, COLUMBUS, OHIO
(3915 ZANE TRACE DRIVE)
(REVISED)



* Situated in the State of Ohio, County of Franklin, City of Columbus, being in Virginia Military Survey No. 547, being 5.453 acres of land, more or less, 4.459 acres of said 5.453 acres being out of that tract of land (39.448 acres of land, more or less, according to a survey by Bauer, Borowitz & Merchant, Inc.) conveyed to The Southgate Development Corporation by deed of record in Deed Book 3321, Page 466, and 0.994 acres of said 5.453 acres being out of that tract of land (70.102 acres of land, more or less, according to a survey by Bauer, Borowitz & Merchant, Inc.) conveyed to The Southgate Development Corporation by deed of record in Deed Book 3321, Page 470, both of record in the Recorder's Office, Franklin County, Ohio.

We hereby certify that the above map has been prepared from information obtained from an actual field survey of the premises by Bauer, Borowitz & Merchant, Inc. and that said map is correct.

BAUER, BOROOWITZ & MERCHANT, INC.
Consulting Engineers
By Felix R. Borowitz
Felix R. Borowitz
Registered Surveyor No. 5361

APRIL 3, 1977
SCALE 1" = 100'
ORD. NO. 54-78

1935 / 300

100