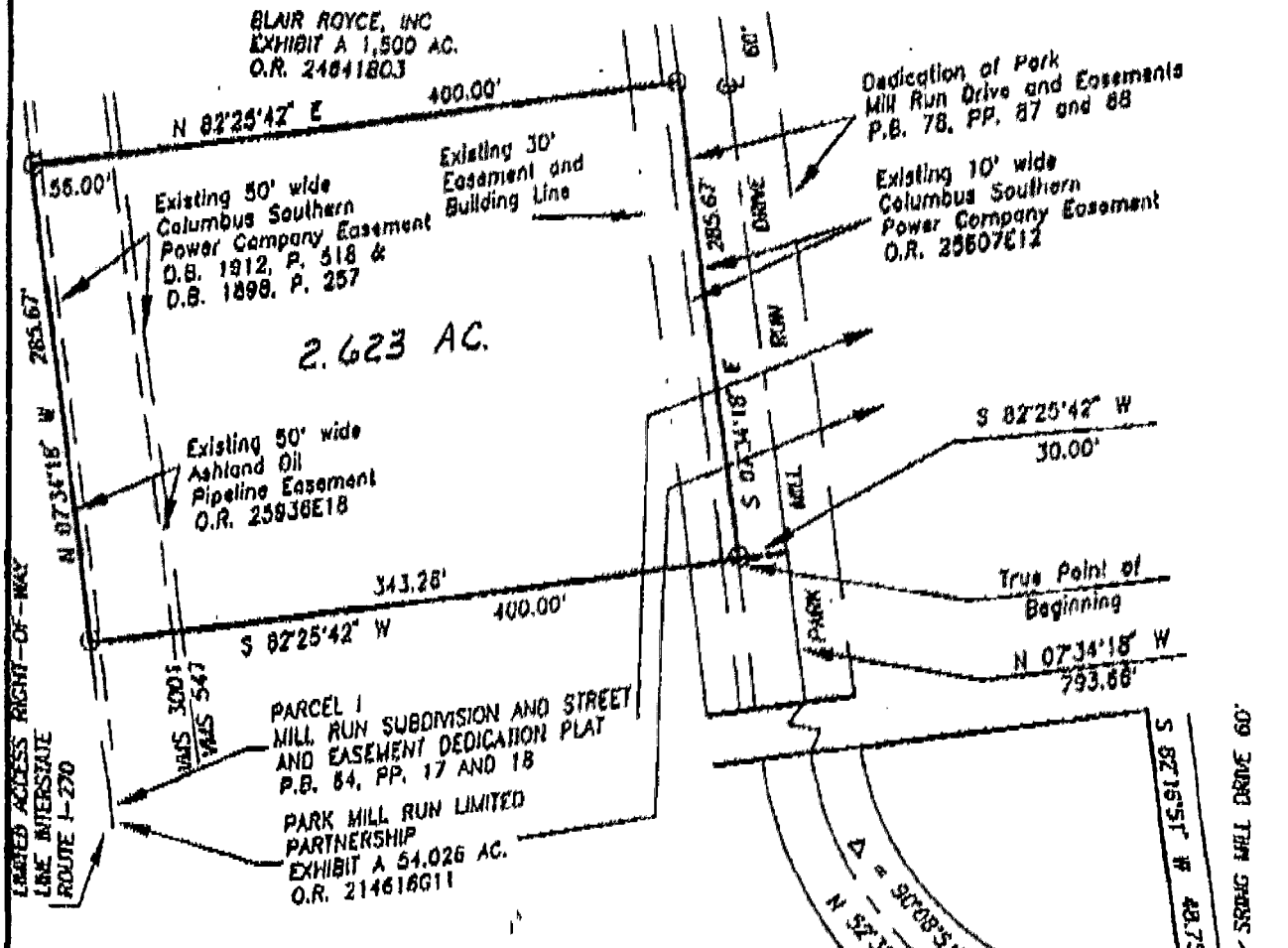


BAUER, DAVIDSON & MERCHANT, INC.

CONSULTING ENGINEERS

255 GREEN MEADOWS DRIVE SOUTH P.O. BOX 370 POWELL OHIO 43065

BOUNDARY SURVEY MAP OF 2.623 ACRES OF LAND LOCATED ON THE WESTERLY SIDE OF PARK MILL RUN DRIVE, IN THE CITY OF HILLIARD, COUNTY OF FRANKLIN, STATE OF OHIO



Situated in the State of Ohio, County of Franklin, City of Hilliard, being in Virginia Military Survey Nos. 547 and 3001 and containing 2.623 acres of land, more or less, said 2.623 acres being in PARCEL 1 as the same is designated and delineated upon the recorded plat of Mill Run Subdivision and Street & Easement Dedication Plat of record in Plat Book 64, Pages 17 and 18, said 2.623 acres being out of that 54,026 acre tract of land described in Exhibit A in the deed to Park Mill Run Limited Partnership, of record in Official Record 214616G11, both being of record in the Recorder's Office, Franklin County, Ohio.

We hereby state that this map was prepared from information obtained from actual field surveys conducted by Bauer, Davidson & Merchant, Inc. in May of 1993 and in April of 1994.

All of the survey markers noted on this map were in place in April of 1994.

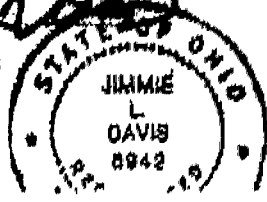
The bearings shown on this map correspond to the bearings shown on the recorded plat of said Dedication of Park Mill Run and Easements.

(A) VACATION OF MILL RUN DRIVE AND REDEDICATION OF MILL RUN DRIVE AND EASEMENTS P.B. 77, P. 18

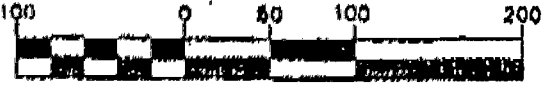
○ indicates a 3/4-inch (I.D.) iron pipe.

BAUER, DAVIDSON & MERCHANT, INC.
Consulting Engineers

By *Jimmie L. Davis*
Jimmie L. Davis
Professional Surveyor No. 6942



GRAPHIC SCALE



Scale: 1" = 100'



J. G. B. N. MERCHANT