

SURVEY OF 1.000 ACRE TRACT

LOCATED IN
VIRGINIA MILITARY SURVEY NO. 547
CITY OF COLUMBUS, FRANKLIN COUNTY, OHIO

SCALE 1" = 100'

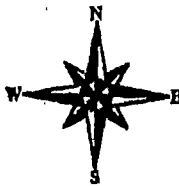
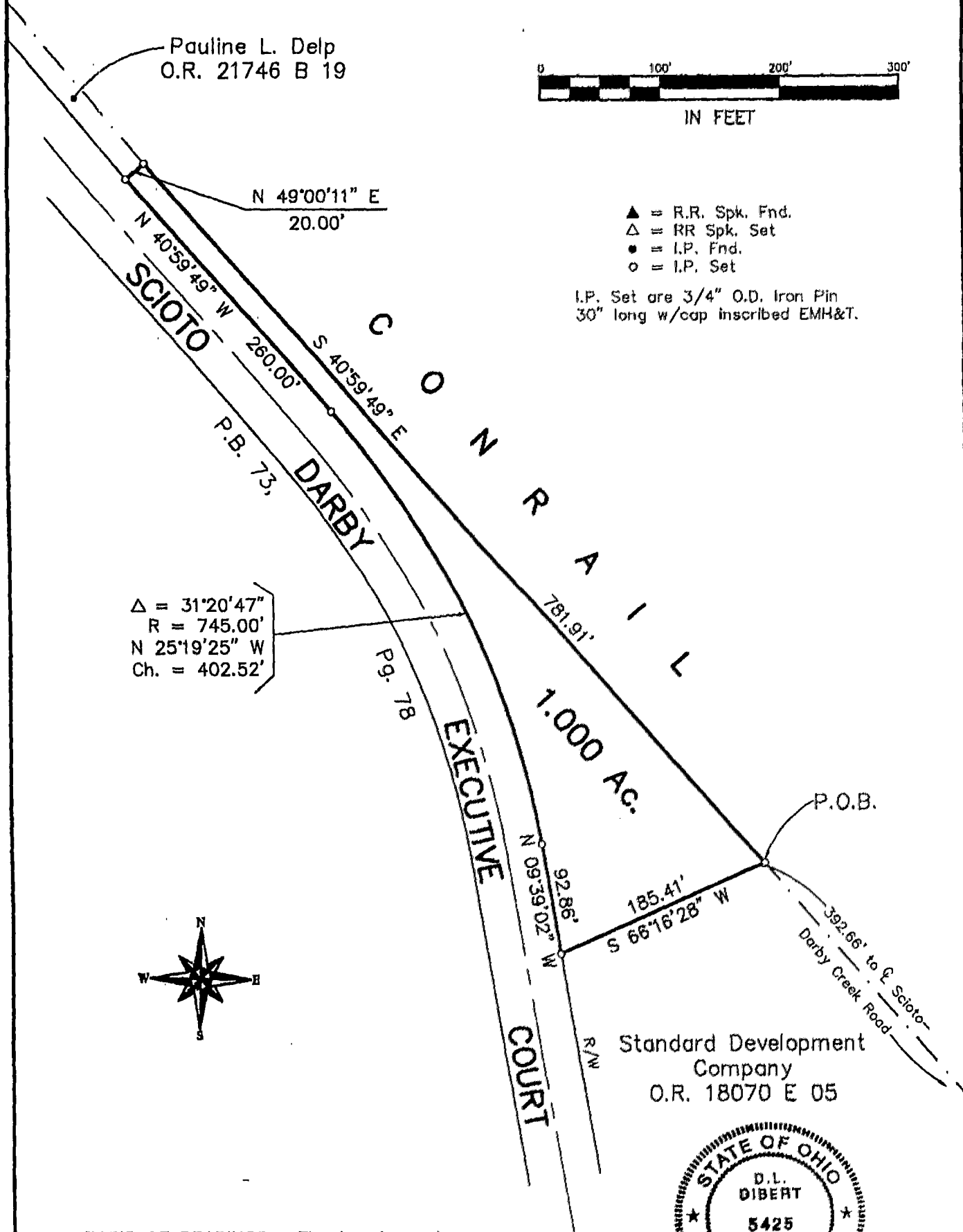
JUNE 13, 1997



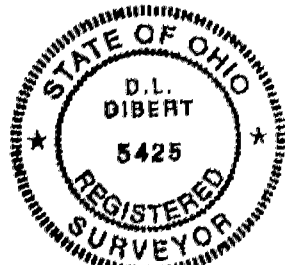
IN FEET

- ▲ = R.R. Spk. Fnd.
- △ = RR Spk. Set
- = I.P. Fnd.
- = I.P. Set

I.P. Set are 3/4" O.D. Iron Pin
30" long w/cap inscribed EMH&T.



BASIS OF BEARINGS : The bearings shown hereon are based on the same meridian as the bearings shown on the recorded plat of "Scioto Darby Executive Court And Scioto Darby Creek Road Dedication And Easements" of record in Plat Book 73, Page 78, Recorder's Office, Franklin County, Ohio.



B.M.H.&T. INC.

By Donald L. Dibert
Professional Surveyor No. 5425

NORWICH 79 607 325