

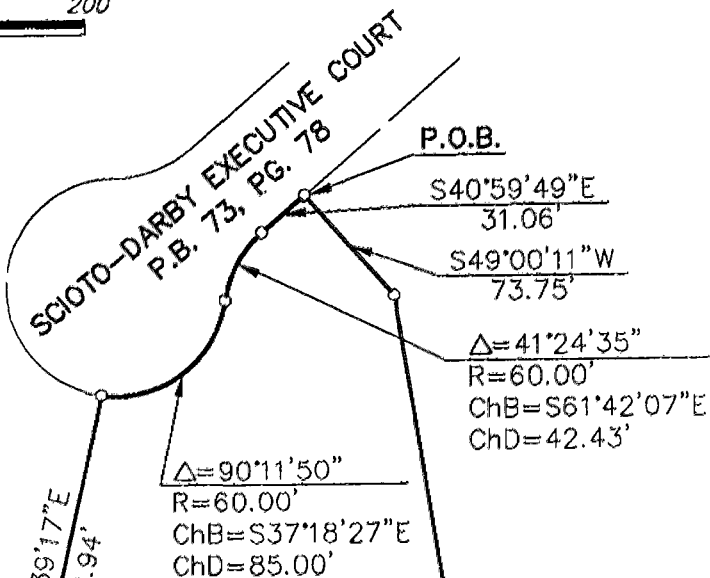
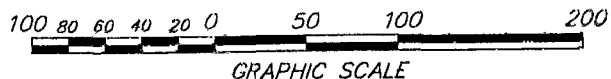
SURVEY OF 3.710 ACRE
 LOCATED IN
 VIRGINIA MILITARY SURVEY NO. 547
 CITY OF COLUMBUS, FRANKLIN COUNTY, STATE OF OHIO

7935-7352

SCALE: 1" = 100'

October 28, 1999

Record References: _____



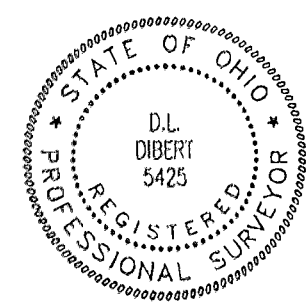
- ▲ = R.R. Spk. Fnd.
- △ = RR Spk. Set
- = I.P. Fnd.
- = I.P. Set

I.P. Set are 3/4" O.D. Iron Pin
 30" long w/cap inscribed EMH&T.

GREGG W. CALLETT
 3.00 AC.
 I.N. 198807080170502

STANDARD DEVELOPMENT
 COMPANY
 3.710 AC.

STANDARD DEVELOPMENT
 COMPANY
 C.R. 1870E05



Norwich
 O-63-E
 Twp.

BASIS OF BEARINGS:

The bearings shown hereon are based on the same meridian as the bearing shown on the record plat of SCIOTO DARBY EXECUTIVE COURT and SCIOTO-DARBY CREEK ROAD dedication and easements in which the centerline of SCIOTO DARBY EXECUTIVE COURT has a bearing of (South 40°59'49" East) of record in Plat Book 73, Page 78, Recorder's Office, Franklin County, Ohio.

E.M.H.&T. INC.

By Donald L. Dibert
 Registered Surveyor No. 5425

PROJECT 199912241DWG191374EXH.DWG - 0 XREFS - PLOTTED BY CHECTOR - October 29, 1999 - 9:10 AM