

FROM BUD MILLER

~~0-63-A~~  
0-63-A

NORWICH TWP.  
0-63-A

$\Delta = 53^{\circ}23'04''$   
 $R = 275'$   
 $N. 80^{\circ}57'12'' E.$   
 $L.C. = 247.06'$

ROAD

1.013 Ac.  
0.248 Ac.

Galloway &  
Wiemals 1.013 Ac.

Ch. - 140.67'  
 $N. 69^{\circ}04'58'' E.$   
 $N. 54^{\circ}15'50'' E.$   
1163.99'

1.247 Ac. Remaining

Easements from  
EASTHILL ACRES plat,  
P.B. 33, Pgs. 28 & 29, and  
VACATION PLAT, P.B. 38, Pg. 20.

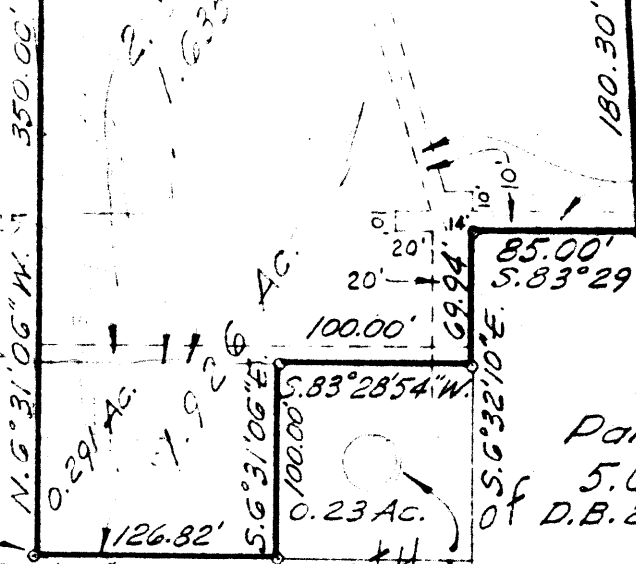
10' Easement  
D.B. 3075, Pg. 225

Hearne Tool & Machine  
Co.

330.06'

EDGEWYN AVENUE EXTENDED  
Parcel No. 2 - D.B. 2370, Pg. 686

$S. 83^{\circ}28'54'' W.$



85.00'  
 $S. 83^{\circ}29'40'' W.$

100.00'

$S. 83^{\circ}28'54'' W.$

100.00'

0.23 Ac.

Parcel No. 1  
5.08 Ac.  
of D.B. 2370, Pg. 686

60'

Water Tower Hilliard

Dec. 28, 1971  
Scale 1" = 100'

79107375

~~0-63-A~~  
0-63-A

Survey showing 1.926 Ac. Tract, City of Hilliard, part of N.M.S. No. 3001, also part of vacated portion of EASTHILL ACRES, P.B. 33, Pgs. 28 & 29, and 2 VACATION PLATS, P.B. 38, Pg. 20, & P.B. 38, Pg. 58, Recorder's Office, Franklin County, Ohio.  
Harry L. Greene