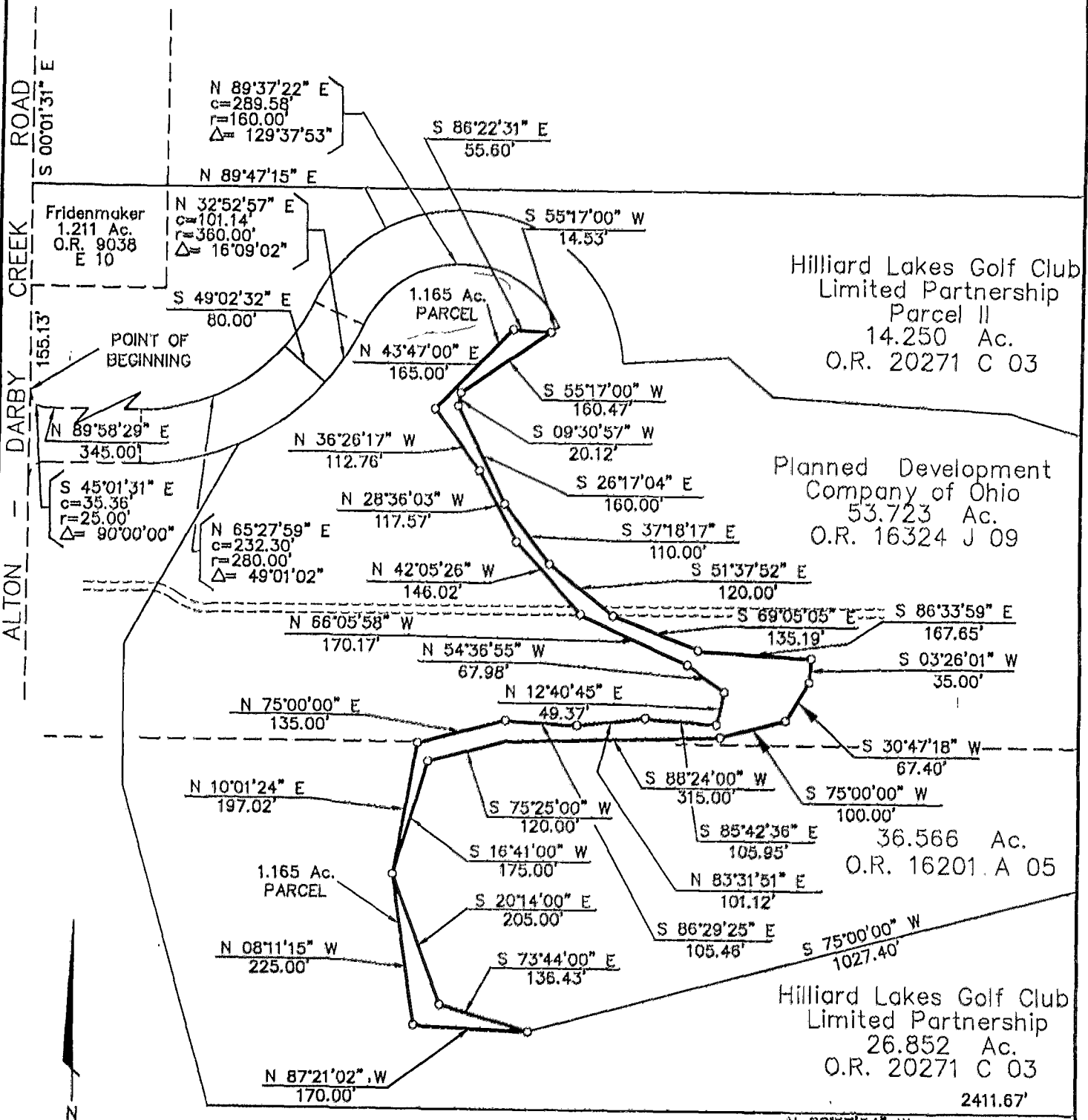




SURVEY OF ACREAGE PARCELS

Located In Virginia Military Survey No. 6638
City Of Hilliard, Franklin County, Ohio

SCALE 1" = 200' IRON PIN NOV. 24, 1993 RECORD REFERENCES O.R. 20271 C 03



BASIS OF BEARINGS: the bearings shown hereon are based upon the easterly right-of-way line of Alton-Darby Creek Road as being South 00°01'31" East as described in The Hilliard Lakes Golf Club Limited Partnership, 14.250 acre tract of record in Official Record 20271 C 03.



E.M.H.&T. INC.

Page 24 of 24 By *Lawrence E. Ball* Professional Surveyor No. 6878

0-62-A
NORWICH TWP