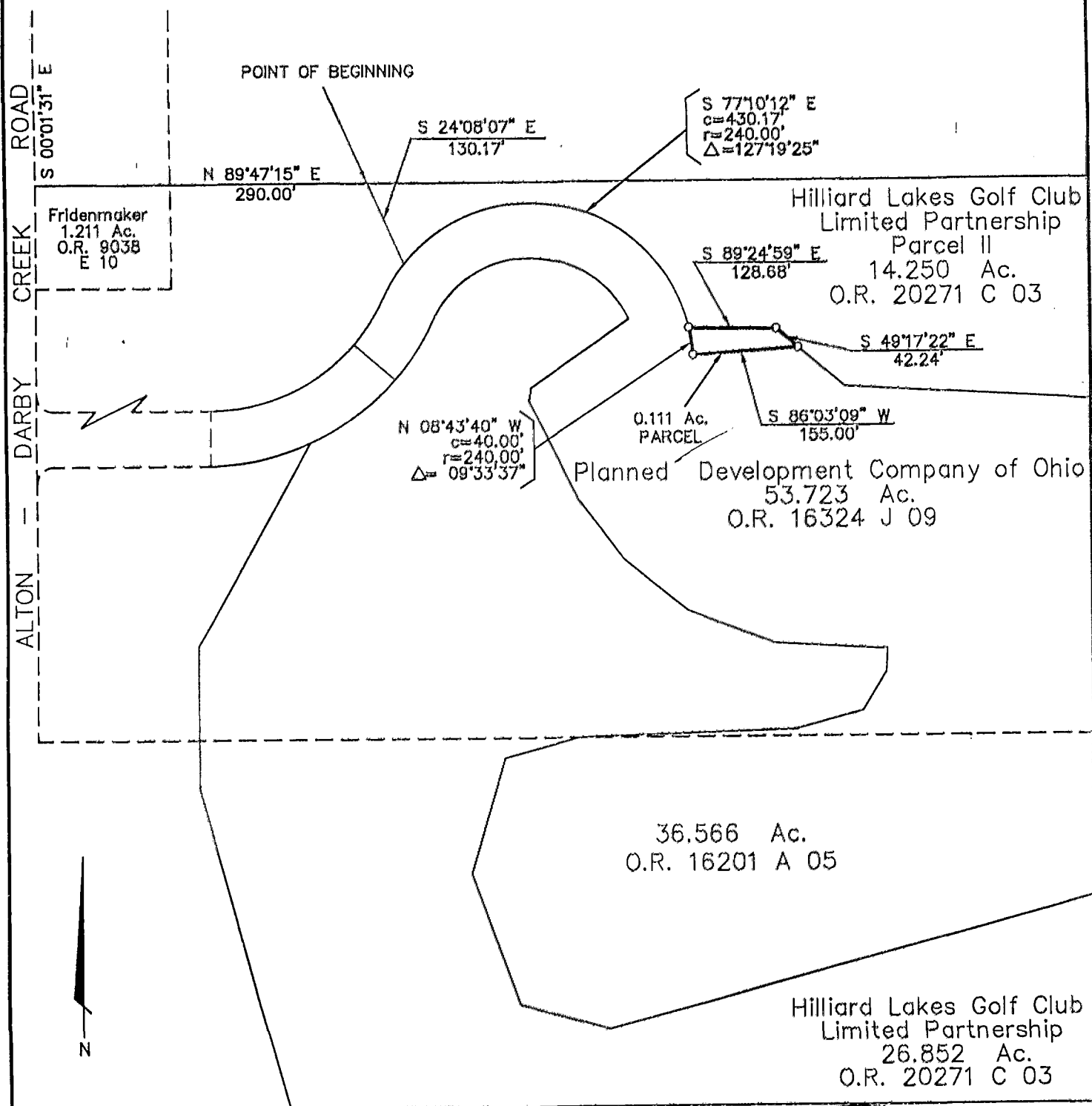


**SURVEY OF ACREAGE PARCELS**  
 Located In Virginia Military Survey No. 6638  
 City Of Hilliard, Franklin County, Ohio

SCALE 1" = 200'      IRON PIN      NOV. 24, 1993      RECORD REFERENCES      O.R. 20271 C 03



*BASIS OF BEARINGS: the bearings shown hereon are based upon the easterly right-of-way line of Alton-Darby Creek Road as being South 00°01'31" East as described in The Hilliard Lakes Golf Club Limited Partnership, 14.250 acre tract of record in Official Record 20271 C 03.*



**E.M.H.&T. INC.**

*Lawrence E. Ball*  
 Professional Surveyor No. 6878

9760733

NOV 24 1993