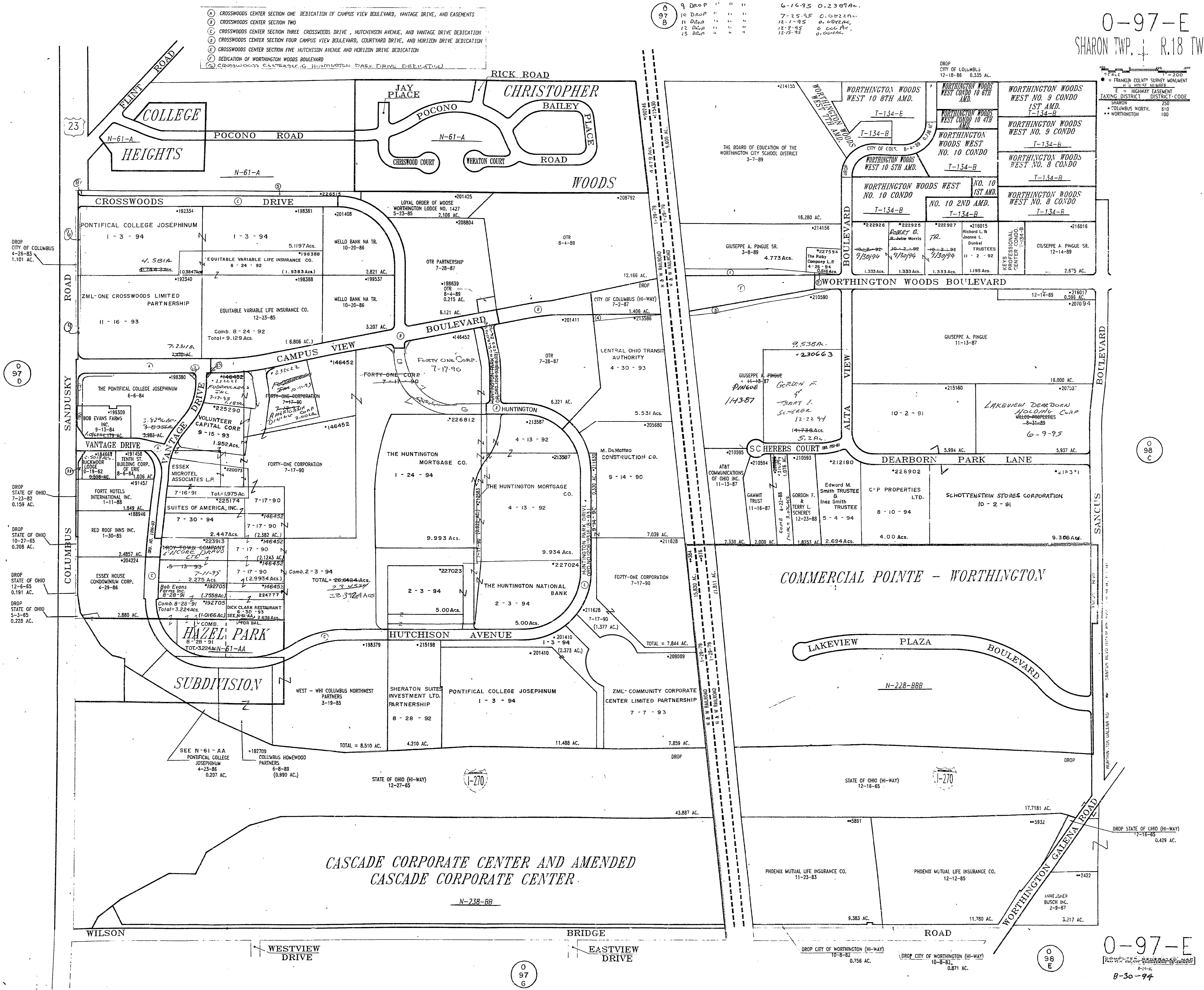


- ① DROP CITY OF COLUMBUS 7-1-92 0.496 AC.
- ② " " " " " " 0.010 "
- ③ " " " " " " 0.425 "
- ④ " " " " " " 2-12-93 0.205 "
- ⑤ 22615 PONTIFICAL COLLEGE JOSEPHINUM 1-3-94 1.289 AC. 1.274 AC.
- ⑥ DROP CITY OF COLS 5-23-93 0.1173 AC.
- ⑦ DROP CITY OF COLS 5-23-95 0.1474 AC.
- ⑧ DROP " " " " 5-23-95 0.0151 AC.
- ⑨ DROP " " " " 6-16-95 0.2389 AC.
- ⑩ DROP " " " " 7-25-95 0.0022 AC.
- ⑪ DROP " " " " 12-1-95 0.0594 AC.
- ⑫ DROP " " " " 12-9-95 0.0041 AC.
- ⑬ DROP " " " " 12-15-95 0.0041 AC.

0-97-E  
SHARON TWP. 1 R.18 TWP.2



0 97 D

0 96 C

0 98 E

0 97 G

0-97-E  
B-30-94

① CROSSWOODS CENTER SECTION ONE DEDICATION OF CAMPUS VIEW BOULEVARD, VANTAGE DRIVE, AND EASEMENTS

② CROSSWOODS CENTER SECTION TWO

③ CROSSWOODS CENTER SECTION THREE CROSSWOODS DRIVE, HUTCHINSON AVENUE, AND VANTAGE DRIVE DEDICATION

④ CROSSWOODS CENTER SECTION FOUR CAMPUS VIEW BOULEVARD, COURTYARD DRIVE, AND HORIZON DRIVE DEDICATION

⑤ CROSSWOODS CENTER SECTION FIVE HUTCHINSON AVENUE AND HORIZON DRIVE DEDICATION

⑥ DEDICATION OF WORTHINGTON WOODS BOULEVARD

⑦ CROSSWOODS CENTER SECTION G HUNTINGTON PARK DRIVE DEDICATION

SCALE 1" = 200'

FRANKLIN COUNTY SURVEY MONUMENT

1/2" = HOUSE NUMBER

E = HIGHWAY EASEMENT

TAXING DISTRICT DISTRICT CODE

SHARON 250

COLUMBUS WORTH 510

WORTHINGTON 100

DROP CITY OF COLUMBUS 4-26-85 1.101 AC.

DROP STATE OF OHIO 7-23-85 0.159 AC.

DROP STATE OF OHIO 10-27-85 0.208 AC.

DROP STATE OF OHIO 12-6-85 0.191 AC.

DROP STATE OF OHIO 5-3-85 0.228 AC.

DROP STATE OF OHIO (HI-WAY) 12-16-85 0.429 AC.

DROP CITY OF WORTHINGTON (HI-WAY) 10-8-82 0.756 AC.

DROP CITY OF WORTHINGTON (HI-WAY) 10-8-82 0.871 AC.

CASCADE CORPORATE CENTER AND AMENDED CASCADE CORPORATE CENTER

① 192354

② 193381

③ 201408

④ 208792

⑤ 198381

⑥ 199357

⑦ 198388

⑧ 192340

⑨ 192340

⑩ 192340

⑪ 192340

⑫ 192340

⑬ 192340

⑭ 192340

⑮ 192340

⑯ 192340

⑰ 192340

⑱ 192340

⑲ 192340

⑳ 192340

㉑ 192340

㉒ 192340

㉓ 192340

㉔ 192340

㉕ 192340

㉖ 192340

㉗ 192340

㉘ 192340

㉙ 192340

㉚ 192340

㉛ 192340

㉜ 192340

㉝ 192340

㉞ 192340

㉟ 192340

㊱ 192340

㊲ 192340

㊳ 192340

㊴ 192340

㊵ 192340

㊶ 192340

㊷ 192340

㊸ 192340

㊹ 192340

㊺ 192340

㊻ 192340

㊼ 192340

㊽ 192340

㊾ 192340

㊿ 192340