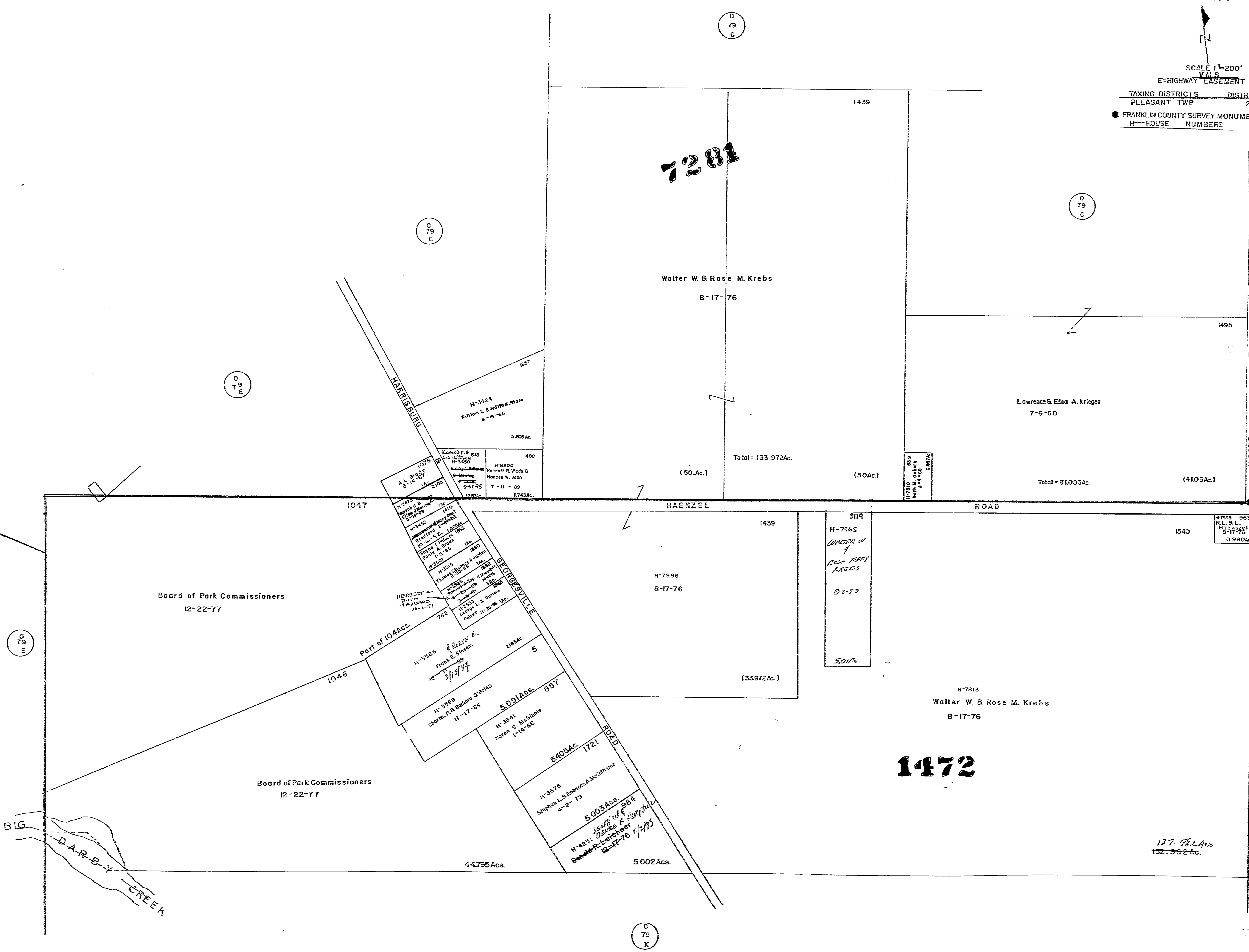


SCALE 1"=200'  
V.M.S.  
E=HIGHWAY EASEMENT

TAXING DISTRICTS DISTRICT CODE  
PLEASANT TWP 230  
FRANKLIN COUNTY SURVEY MONUMENTS  
H---HOUSE NUMBERS



7281

1472

Walter W. & Rose M. Krebs  
8-17-76

Lawrence & Edna A. Krieger  
7-6-60

H-7996  
8-17-76

H-7813  
Walter W. & Rose M. Krebs  
8-17-76

H-3424  
William L. & Judith K. Stone  
8-19-85

H-3450  
Kenneth R. Wade &  
Nancee W. John  
7-11-89

H-3501  
Theresa E. Jordan  
11-20-96

H-3566  
Frank E. Stevens  
11-21-74

H-3599  
Charles F. & Barbara O'Brien  
11-17-84

H-3641  
Karen S. McClintic  
1-14-86

H-3675  
Stephen L. & Rebecca A. McCallister  
4-2-79

H-4291  
Debbie A. Whipple  
12-17-76

Board of Park Commissioners  
12-22-77

Board of Park Commissioners  
12-22-77

D.A.R.-B.-Y  
CREEK

079 E

079 C

079 C

079 C

082 A

082 C

079 K

Table with 2 columns: Description, Value. Includes entries for 'Total' and 'Acres'.