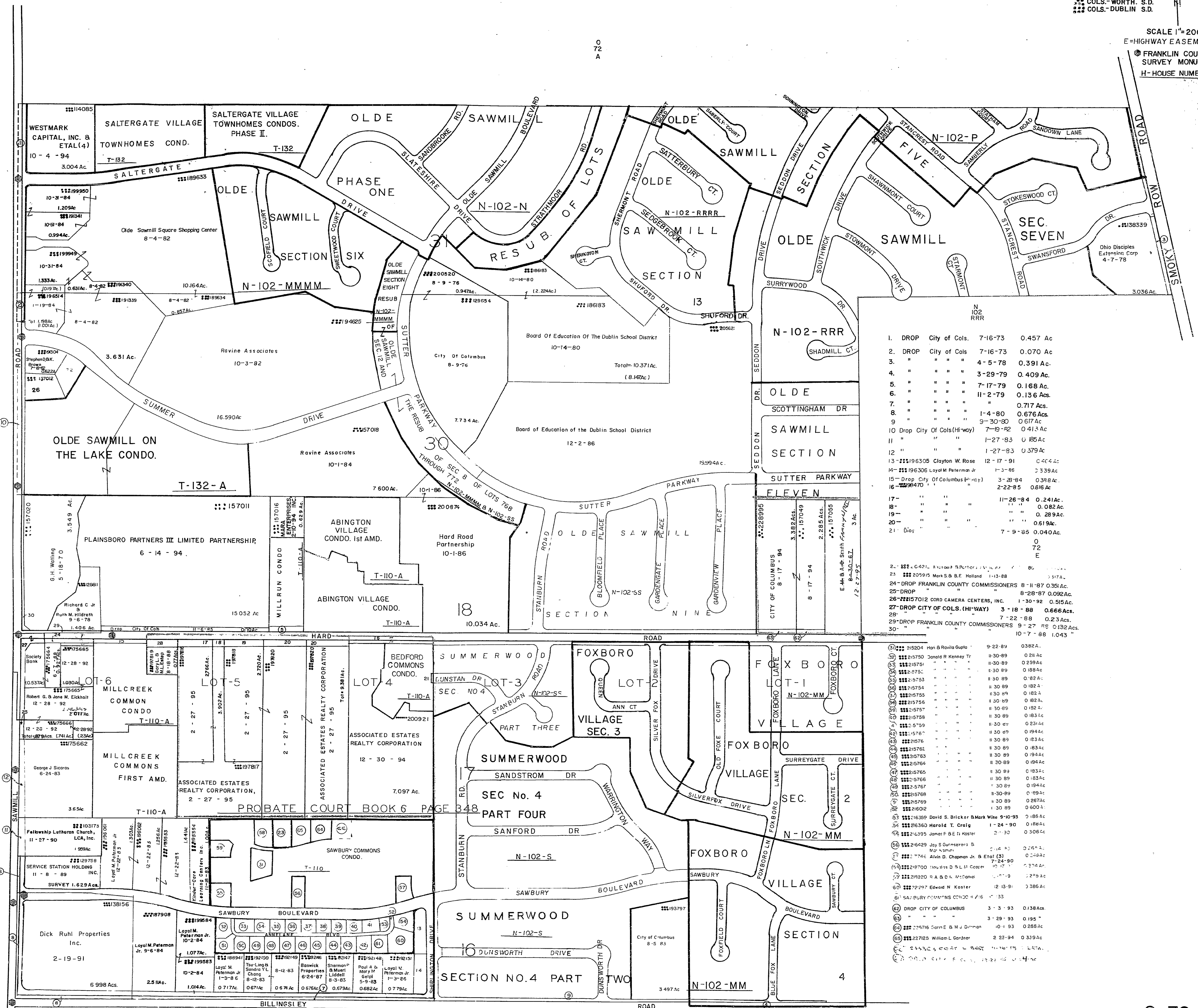


O-72-D
PERRY TWP
R19 TWP 2
 TAXING DISTRICTS DISTRICT CODE
 PERRY-DUBLIN 212
 COLS.-WORTH S.D. 610
 COLS.-DUBLIN S.D. 590

SCALE 1"=200'
 E=HIGHWAY EASEMENT
 F=FRANKLIN COUNTY SURVEY MONUMENT
 H=HOUSE NUMBERS



1.	DROP	City of Cols.	7-16-73	0.457 Ac
2.	DROP	City of Cols	7-16-73	0.070 Ac
3.	"	"	4-5-78	0.391 Ac.
4.	"	"	3-29-79	0.409 Ac.
5.	"	"	7-17-79	0.168 Ac.
6.	"	"	11-2-79	0.136 Ac.
7.	"	"	"	0.717 Ac.
8.	"	"	1-4-80	0.676 Ac.
9.	"	"	9-30-80	0.617 Ac.
10.	Drop	City of Cols(Hi-way)	7-19-82	0.413 Ac
11.	"	"	1-27-83	0.185 Ac
12.	"	"	1-27-83	0.379 Ac
13.	***196305	Clayton W. Rose	12-17-91	0.404 Ac.
14.	***196306	Loyal M. Pateman Jr	1-3-86	2.339 Ac.
15.	Drop	City of Columbus (Hi-way)	3-28-84	0.398 Ac.
16.	***98470	"	2-22-85	0.616 Ac.
17.	"	"	11-26-84	0.241 Ac.
18.	"	"	"	0.082 Ac.
19.	"	"	"	0.289 Ac.
20.	"	"	"	0.619 Ac.
21.	Drop	"	7-9-85	0.040 Ac.
				0.72 E
22.	***C-421	Victor B. Petherick	"	86
23.	***205915	Mark S. & B.F. Holland	1-13-88	0.317 Ac.
24.	DROP	FRANKLIN COUNTY COMMISSIONERS	8-11-87	0.051 Ac.
25.	DROP	"	8-28-87	0.092 Ac.
26.	***157012	CORD CAMERA CENTERS, INC.	1-30-92	0.515 Ac.
27.	DROP	CITY OF COLS. (HI-WAY)	3-18-88	0.666 Ac.
28.	"	"	7-22-88	0.23 Ac.
29.	DROP	FRANKLIN COUNTY COMMISSIONERS	9-27-88	0.132 Ac.
30.	"	"	10-7-88	1.043 Ac.

31.	***215004	Hon & Ronita Gupta	9-22-89	0.382 Ac.
32.	***215750	Donald R. Kenney Tr	11-30-89	0.21 Ac.
33.	***215751	"	11-30-89	0.259 Ac.
34.	***215752	"	11-30-89	0.188 Ac.
35.	***215753	"	11-30-89	0.182 Ac.
36.	***215754	"	11-30-89	0.182 Ac.
37.	***215755	"	11-30-89	0.182 Ac.
38.	***215756	"	11-30-89	0.182 Ac.
39.	***215757	"	11-30-89	0.182 Ac.
40.	***215758	"	11-30-89	0.182 Ac.
41.	***215759	"	11-30-89	0.182 Ac.
42.	***215760	"	11-30-89	0.182 Ac.
43.	***215761	"	11-30-89	0.182 Ac.
44.	***215762	"	11-30-89	0.182 Ac.
45.	***215763	"	11-30-89	0.182 Ac.
46.	***215764	"	11-30-89	0.182 Ac.
47.	***215765	"	11-30-89	0.182 Ac.
48.	***215766	"	11-30-89	0.182 Ac.
49.	***215767	"	11-30-89	0.182 Ac.
50.	***215768	"	11-30-89	0.182 Ac.
51.	***215769	"	11-30-89	0.182 Ac.
52.	***215770	"	11-30-89	0.182 Ac.
53.	***215771	"	11-30-89	0.182 Ac.
54.	***215772	"	11-30-89	0.182 Ac.
55.	***215773	"	11-30-89	0.182 Ac.
56.	***215774	"	11-30-89	0.182 Ac.
57.	***215775	"	11-30-89	0.182 Ac.
58.	***215776	"	11-30-89	0.182 Ac.
59.	***215777	"	11-30-89	0.182 Ac.
60.	***215778	"	11-30-89	0.182 Ac.
61.	***215779	"	11-30-89	0.182 Ac.
62.	***215780	"	11-30-89	0.182 Ac.
63.	***215781	"	11-30-89	0.182 Ac.
64.	***215782	"	11-30-89	0.182 Ac.
65.	***215783	"	11-30-89	0.182 Ac.
66.	***215784	"	11-30-89	0.182 Ac.
67.	***215785	"	11-30-89	0.182 Ac.
68.	***215786	"	11-30-89	0.182 Ac.
69.	***215787	"	11-30-89	0.182 Ac.
70.	***215788	"	11-30-89	0.182 Ac.
71.	***215789	"	11-30-89	0.182 Ac.
72.	***215790	"	11-30-89	0.182 Ac.
73.	***215791	"	11-30-89	0.182 Ac.
74.	***215792	"	11-30-89	0.182 Ac.
75.	***215793	"	11-30-89	0.182 Ac.
76.	***215794	"	11-30-89	0.182 Ac.
77.	***215795	"	11-30-89	0.182 Ac.
78.	***215796	"	11-30-89	0.182 Ac.
79.	***215797	"	11-30-89	0.182 Ac.
80.	***215798	"	11-30-89	0.182 Ac.
81.	***215799	"	11-30-89	0.182 Ac.
82.	***215800	"	11-30-89	0.182 Ac.
83.	***215801	"	11-30-89	0.182 Ac.
84.	***215802	"	11-30-89	0.182 Ac.
85.	***215803	"	11-30-89	0.182 Ac.
86.	***215804	"	11-30-89	0.182 Ac.
87.	***215805	"	11-30-89	0.182 Ac.
88.	***215806	"	11-30-89	0.182 Ac.
89.	***215807	"	11-30-89	0.182 Ac.
90.	***215808	"	11-30-89	0.182 Ac.
91.	***215809	"	11-30-89	0.182 Ac.
92.	***215810	"	11-30-89	0.182 Ac.
93.	***215811	"	11-30-89	0.182 Ac.
94.	***215812	"	11-30-89	0.182 Ac.
95.	***215813	"	11-30-89	0.182 Ac.
96.	***215814	"	11-30-89	0.182 Ac.
97.	***215815	"	11-30-89	0.182 Ac.
98.	***215816	"	11-30-89	0.182 Ac.
99.	***215817	"	11-30-89	0.182 Ac.
100.	***215818	"	11-30-89	0.182 Ac.

O-72-D
 5/4/95
 RAC
 RAC
 RAC