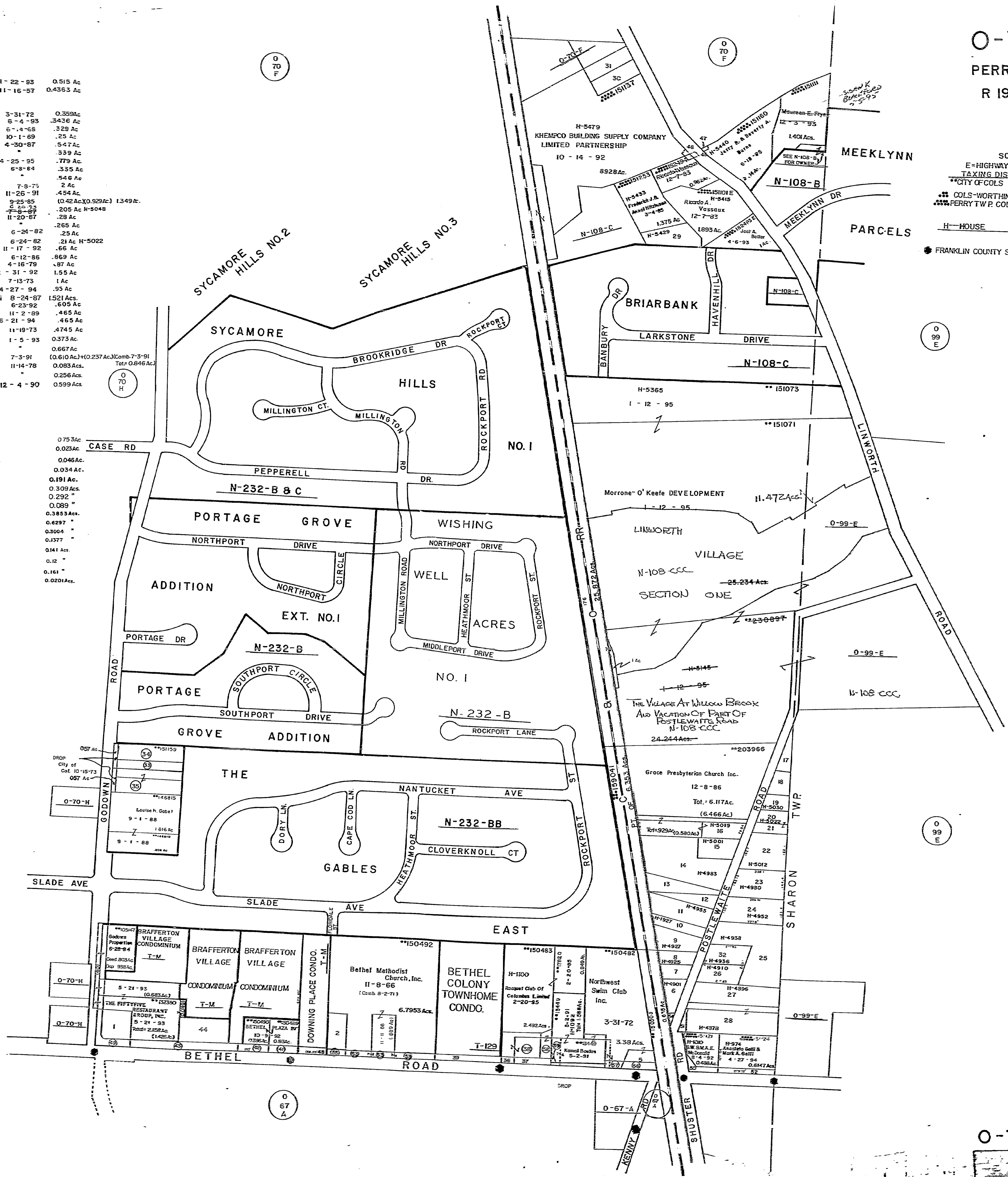


0-70-J
 PERRY TWP
 R 19 TWP 2

SCALE 1"=200'
 E-HIGHWAY EASEMENT
 TAXING DISTRICTS, DISTRICTS CODE
 CITY OF COLS 010
 COLS-WORTHINGTON S.D. 610
 PERRY TWP. COLS. S.D. 216
 H-HOUSE NUMBERS
 FRANKLIN COUNTY SURVEY MONUMENTS

1	**138788	LAR-JO LTD.	11-22-93	0.515 Ac
2	**50454	Bethel Methodist Church, Trs	11-16-57	0.4363 Ac
3				
4	**150481	Northwest Swim Club Inc	3-31-72	0.398Ac
5	**151126	James A. Brownfield & Karen L. Brownfield	5-4-93	3426 Ac
6	**151267	Columbia Gas & Oil Inc	6-14-68	.328 Ac
7	**151131	Debrae M. Mersand	10-1-69	.25 Ac
8	**151165	William W. Adams Trustee	4-30-87	.547 Ac
9	**151129			.339 Ac
10	**151140	Matthew E. & Deborah Lynn Brown	4-25-95	.779 Ac
11	**151135	Byers Circle Investment Inc	6-8-84	.335 Ac
12	**151130			.546 Ac
13	**151080	Wilson E. & R.R. Lee	7-8-75	2 Ac
14	**205968	Christine S. Toyner	11-26-91	.454 Ac
15	**203967	Patricia A. Lanyon	9-25-85	(0.42 Ac)(0.929 Ac) 1.349 Ac
16	**151125	Lazley L. Constable-DeYoung	6-20-93	.205 Ac H-5048
17	**151156	Douglas K. Harman	7-8-87	.28 Ac
18	**151155			.265 Ac
19	**151138	G. J. Warner	6-24-82	.25 Ac
20	**151122	G. J. Warner	6-24-82	21 Ac H-5022
21	**151133	Richard A. & Helen M. Leasure	11-17-92	.66 Ac
22	**151119	Mark A. & Karen L. Massara	6-12-86	.869 Ac
23	**151134	Susan H. Crossen	4-16-79	.87 Ac
24	**151123	Olga Court	12-31-92	1.55 Ac
25	**151128	Hobart Dale Bethel	7-13-73	1 Ac
26	**151118	Mark A. Galli & Mark A. Galli	4-27-94	.95 Ac
27	**151120	Edward A. Kemmer Foundation & Anacieto Galli	8-24-87	1.521 Ac
28	**126427	Jane E. Tiffin	6-23-92	.605 Ac
29	**137466	Patricia A. Hay	11-2-89	.465 Ac
30	**137467	Mary E. Burcher	6-21-94	.465 Ac
31	**104068	R. A. & B. E. Moore	11-19-73	.4745 Ac
32	**15929	Gloria L. Humphreys	1-5-93	0.373 Ac
33	**151155			0.667 Ac
34	**151085	George J. & Beth A. Learmonth	7-3-91	(0.610 Ac)+(0.257 Ac)(Comb. 7-3-91)
35	**DROP CITY OF COLS.		11-14-78	0.083 Ac
36	**DROP CITY OF COLS.			0.256 Ac
37	**179771	John W. Barry	12-4-90	0.599 Ac
38	**189339	James J. & Susan M. Peppe	10-23-87	0.753 Ac
39	**Drop Franklin County Commissioners		9-27-84	0.023 Ac
40	**Drop " "		11-10-84	0.046 Ac
41	**Drop " "		1-16-85	0.034 Ac
42	**Drop " "		3-18-88	0.191 Ac
43	**Drop " "		9-6-89	0.309 Ac
44	**Drop " "		10-3-89	0.292 "
45	**Drop " "		10-12-89	0.089 "
46	**Drop " "		1-19-90	0.3853 Ac
47	**Drop " "		3-29-90	0.6297 "
48	**Drop " "		7-23-90	0.3604 "
49	**Drop " "		10-26-90	0.1377 "
50	**Drop " "		3-2-92	0.141 Ac
51	**Drop " "			0.12 "
52	**Drop " "		10-26-92	0.161 "
53	**Drop " "		3-14-94	0.0201 Ac



0 70 H

0 99 E

0 67 A

0-70-J

382
5/1/95