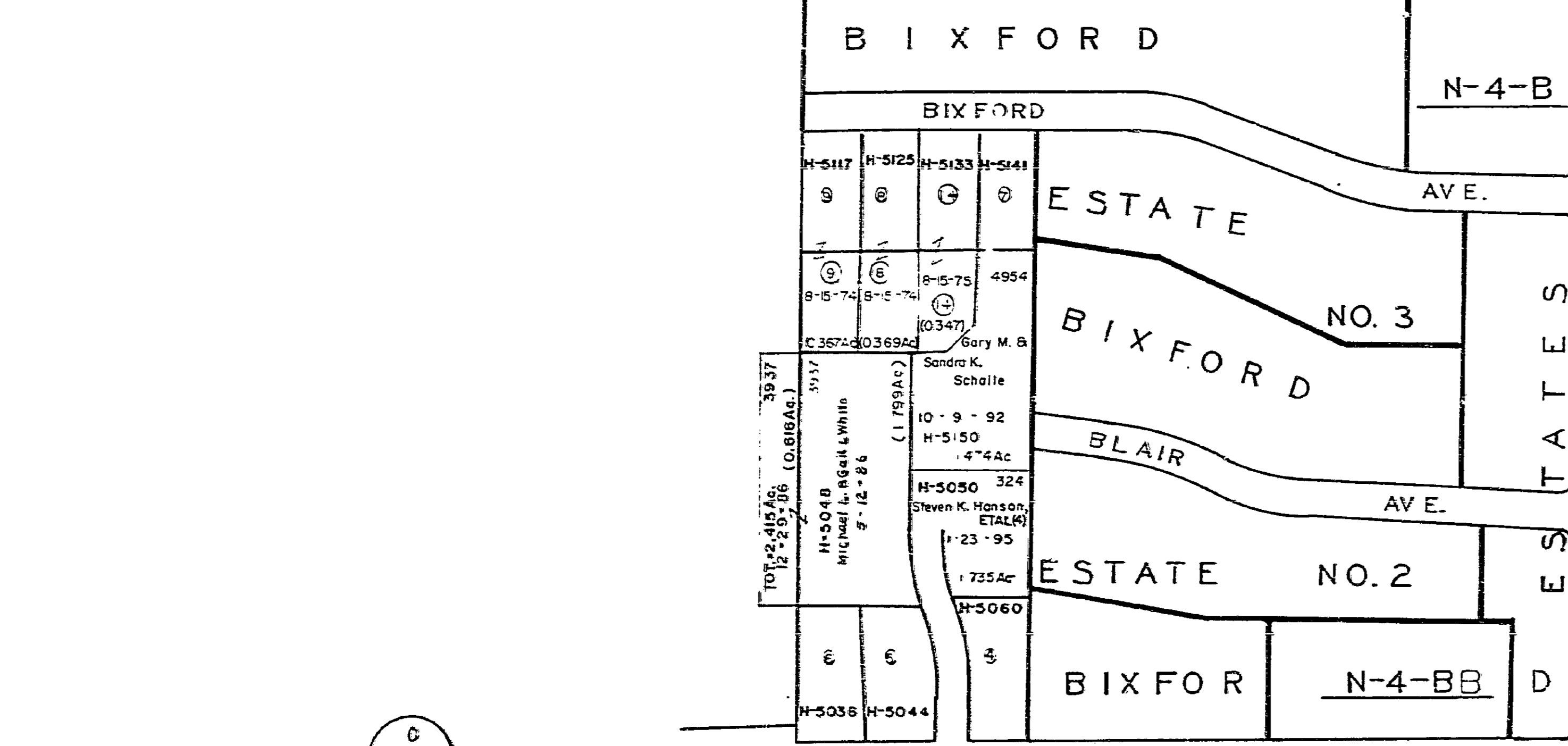
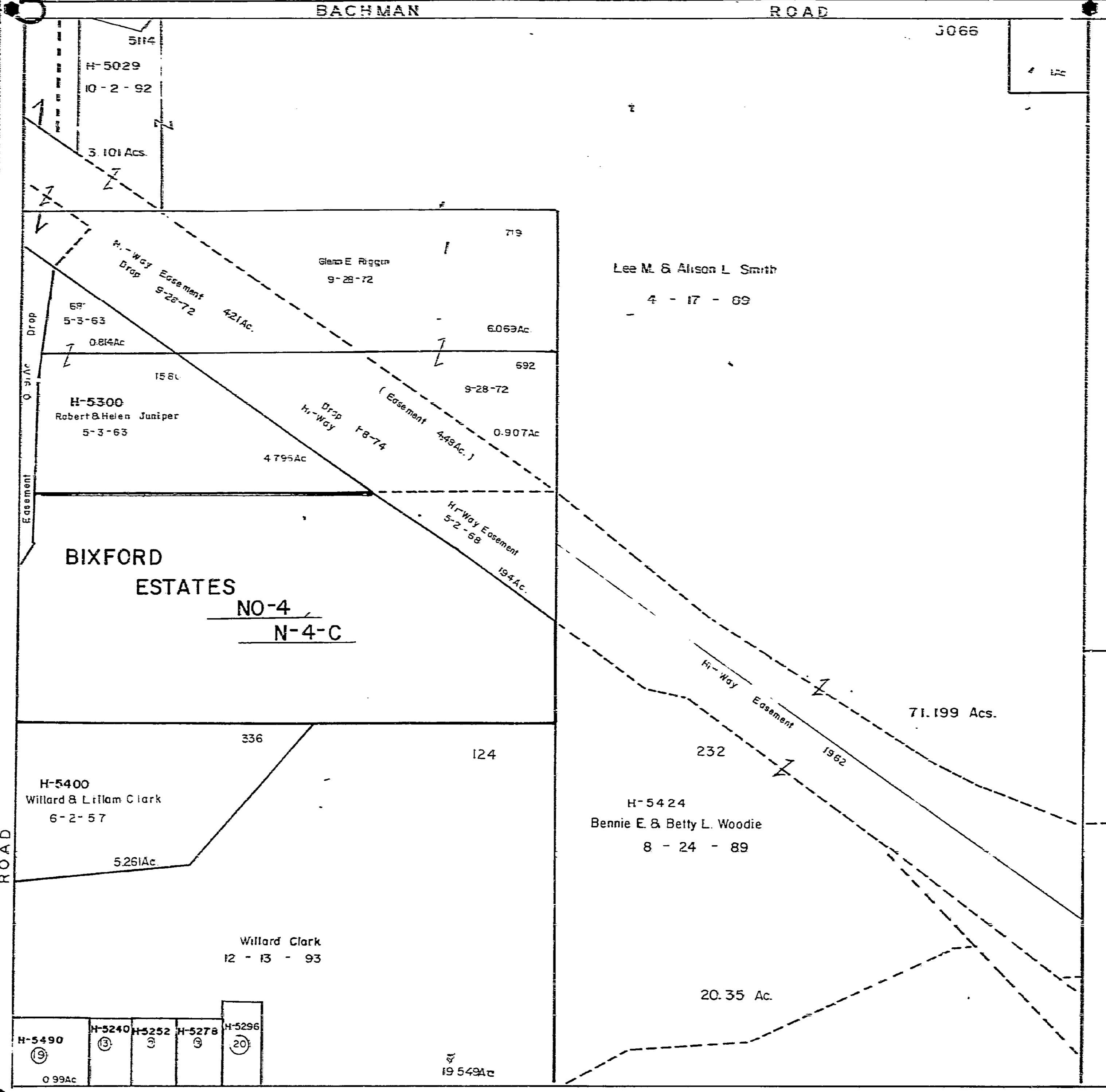
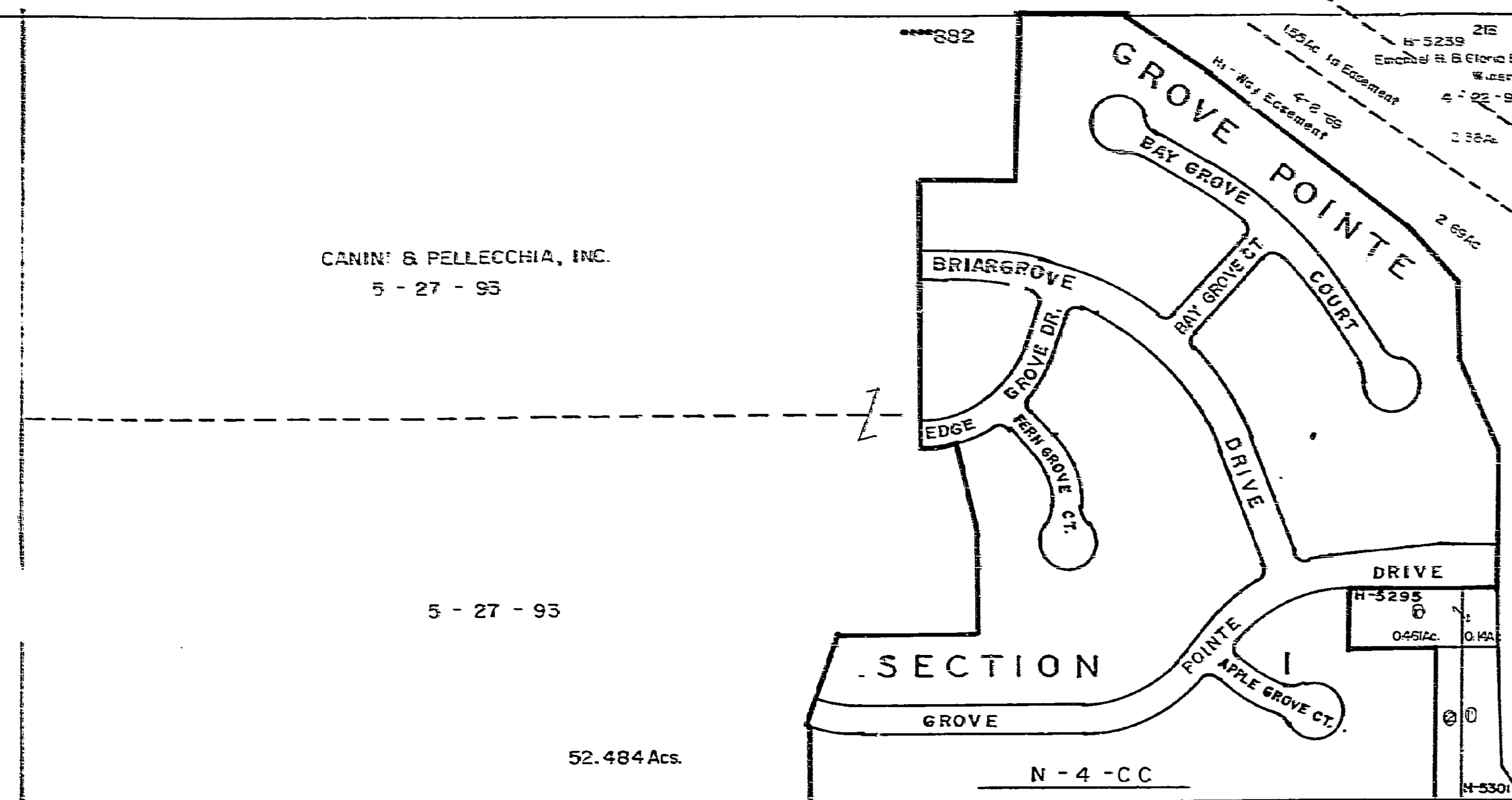


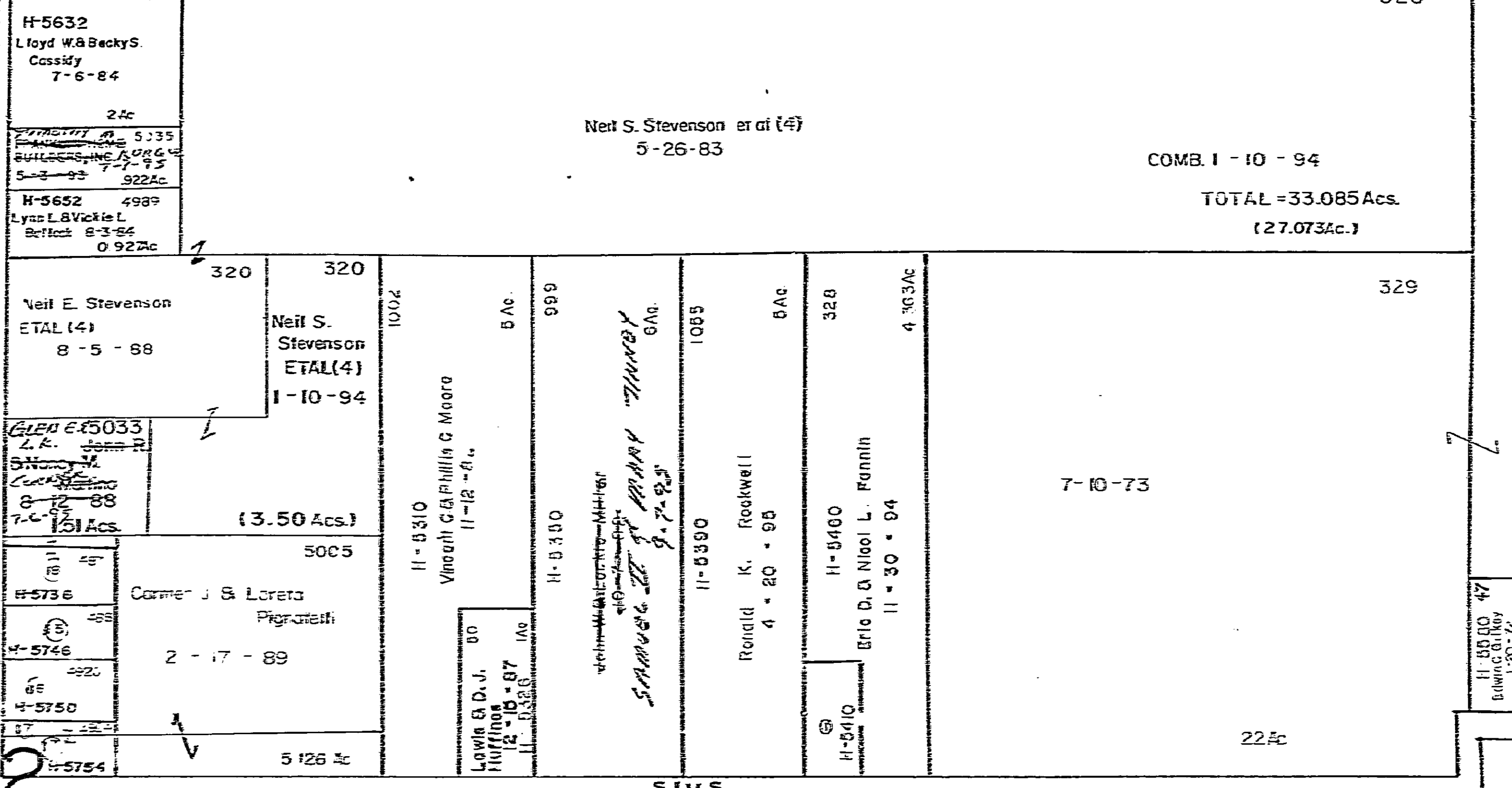
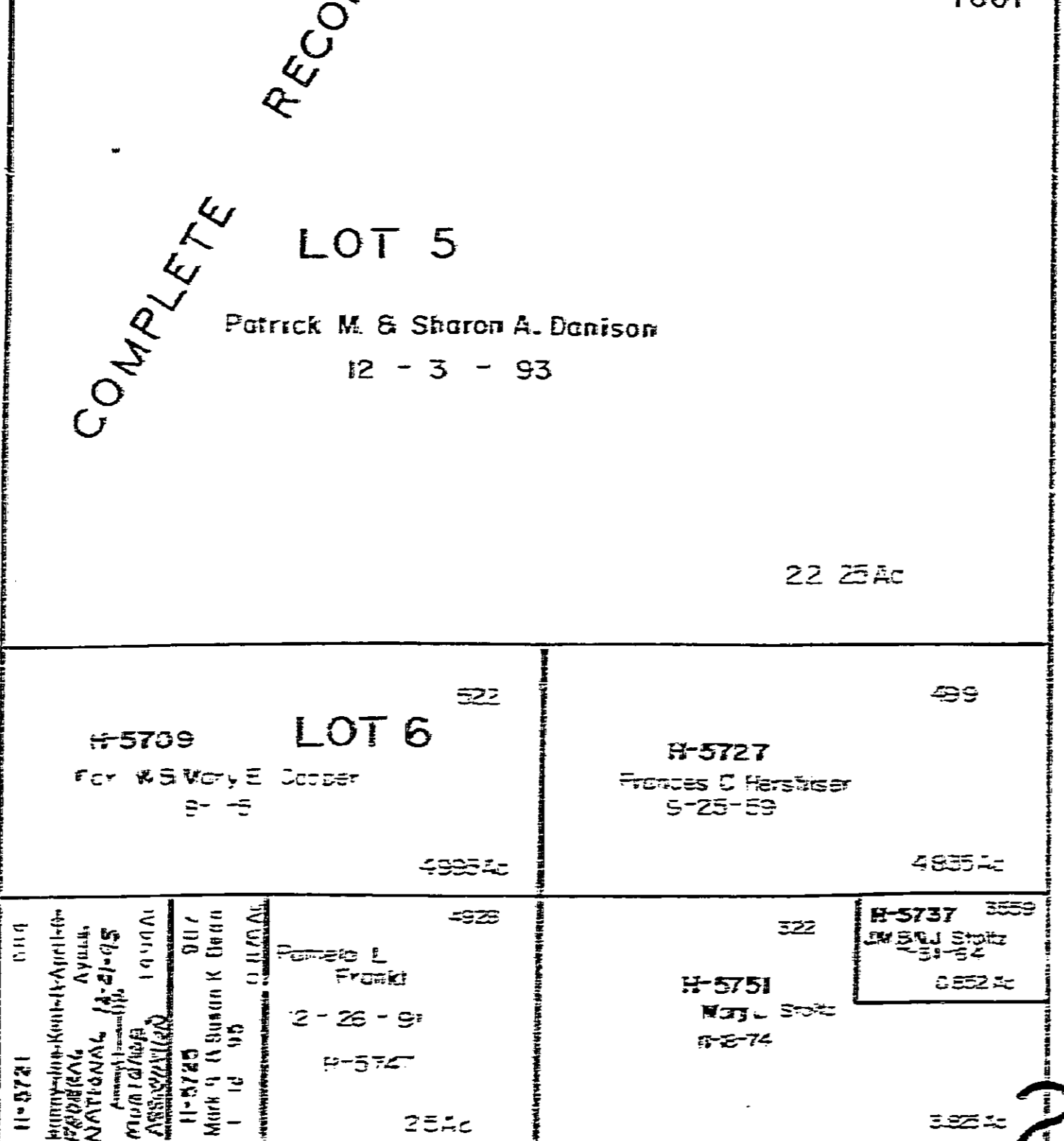
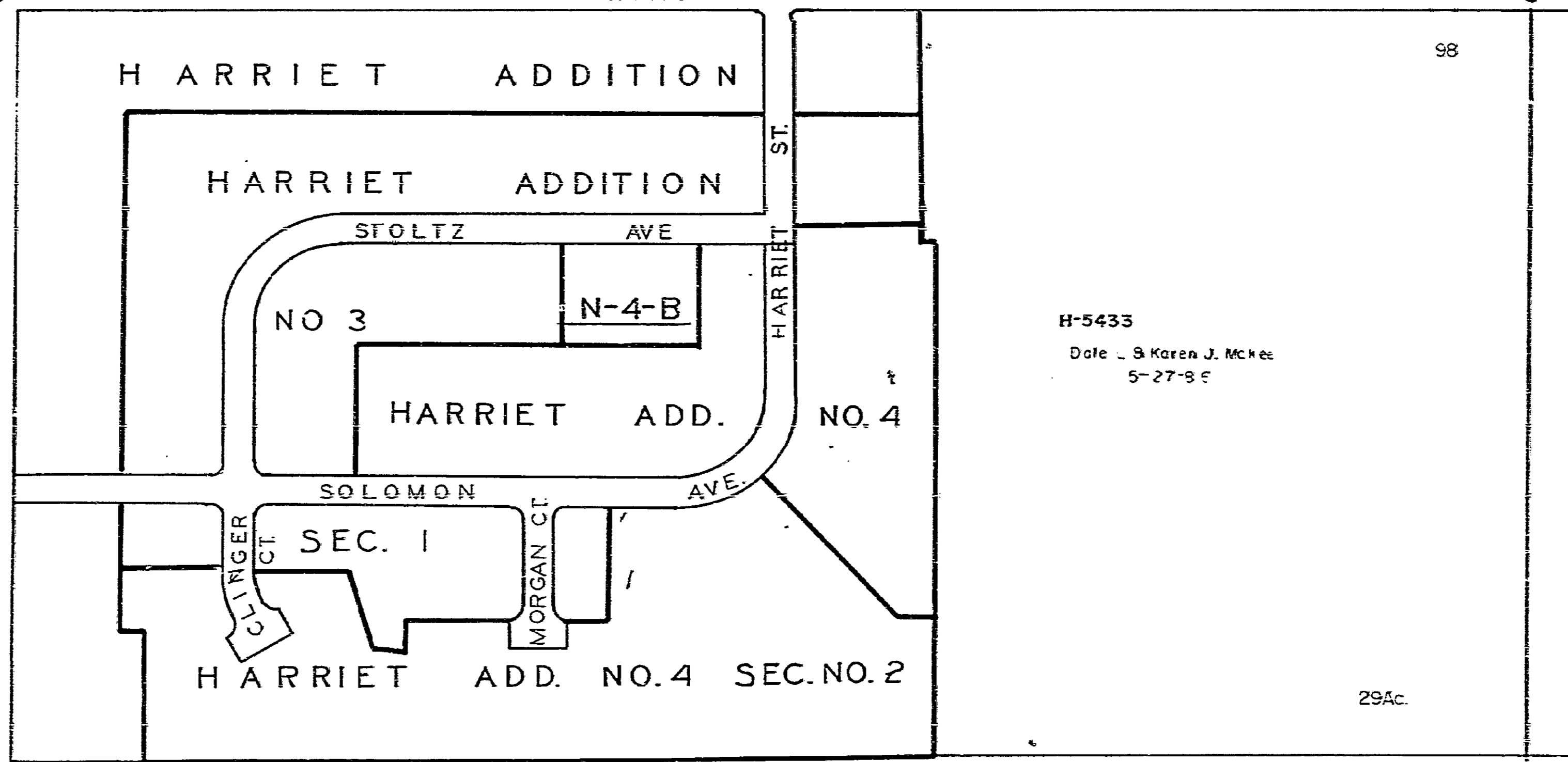
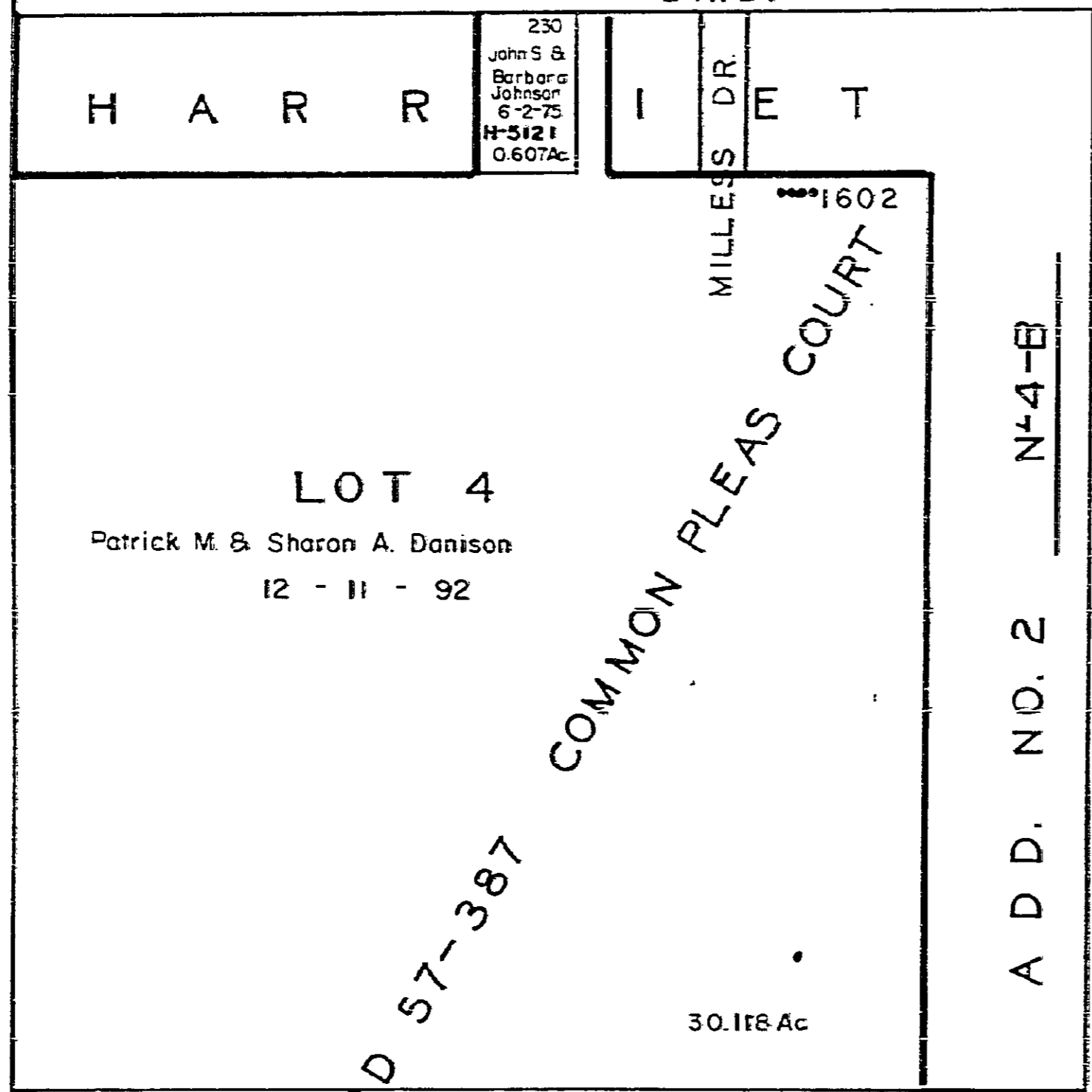
0-45-B
MADISON TWP.
R.21 TWR11

SCALE 1"=200'
E-HIGHWAY EASEMENT
TAXING DISTRICT CODE
MADISON TWP 155
GROVEPORT CLRP 155
MADISON TWP 155

H-HOUSE NUMBERS
FRANKLIN COUNTY SURVEY MONUMENT



- 1579 Janet & Nancy S. Soveran 9-1-84 0.515 Ac.
- 2-1706 Vincent J. & Wanda L. Mannetti 7-15-88 0.540 Ac.
- 3-536 Lawrence W. & Shirley S. Steyer 2-24-86 0.54 Ac.
- 4-4248 Chester F. Bradley 2-16-95 0.604 Ac.
- 5-1409 Pat Brooksbury Jr. 5-26-93 0.65 Ac.
- 6-13 George E. & Thelma G. Cheneau 3-22-67 0.569 Ac.
- 7-642 Robert L. Ward Sr. 6-25-72 0.48 Ac.
- 8-372 David F. & Kimberly A. Jacobs II 1-1-89 (0.452 Ac.) total 10.831 Ac.
- 9-692 David P. Painter & Nancy B. Painter 4-4-81 (0.452 Ac.) total 0.829 Ac.
- 10-3935 Kevin E. & Chere A. Stahman 5-10-95 0.604 Ac.
- 11-27 Betty A. Waters 6-25-92 0.485 Ac. (combined 0.783 Ac.)
- 12-135 Byron E. & Carol L. White 5-7-79 0.540 Ac.
- 13-65 Charles M. & Shirley A. Branscome 3-29-94 (0.462 Ac.) total 0.809 Ac.
- 14-488 Kevin L. & Tazmy L. Grady 9-10-93 0.554 Ac.
- 15-492 Rodney M. & L.S. McLeod 3-6-79 0.534 Ac.
- 17-4924 Gary D. & Dana Messer 9-9-92 0.268 Ac.
- 18-487 Carmel A. & Loretta Pagan 3-6-83 0.544 Ac.
- 19-186 Donna L. Baeficker 12-17-93 0.99 Ac.
- 20-4970 Mattie B. & Pamela M. Brown 10-4-94 0.550 Ac.



0-45-B
7/7/05