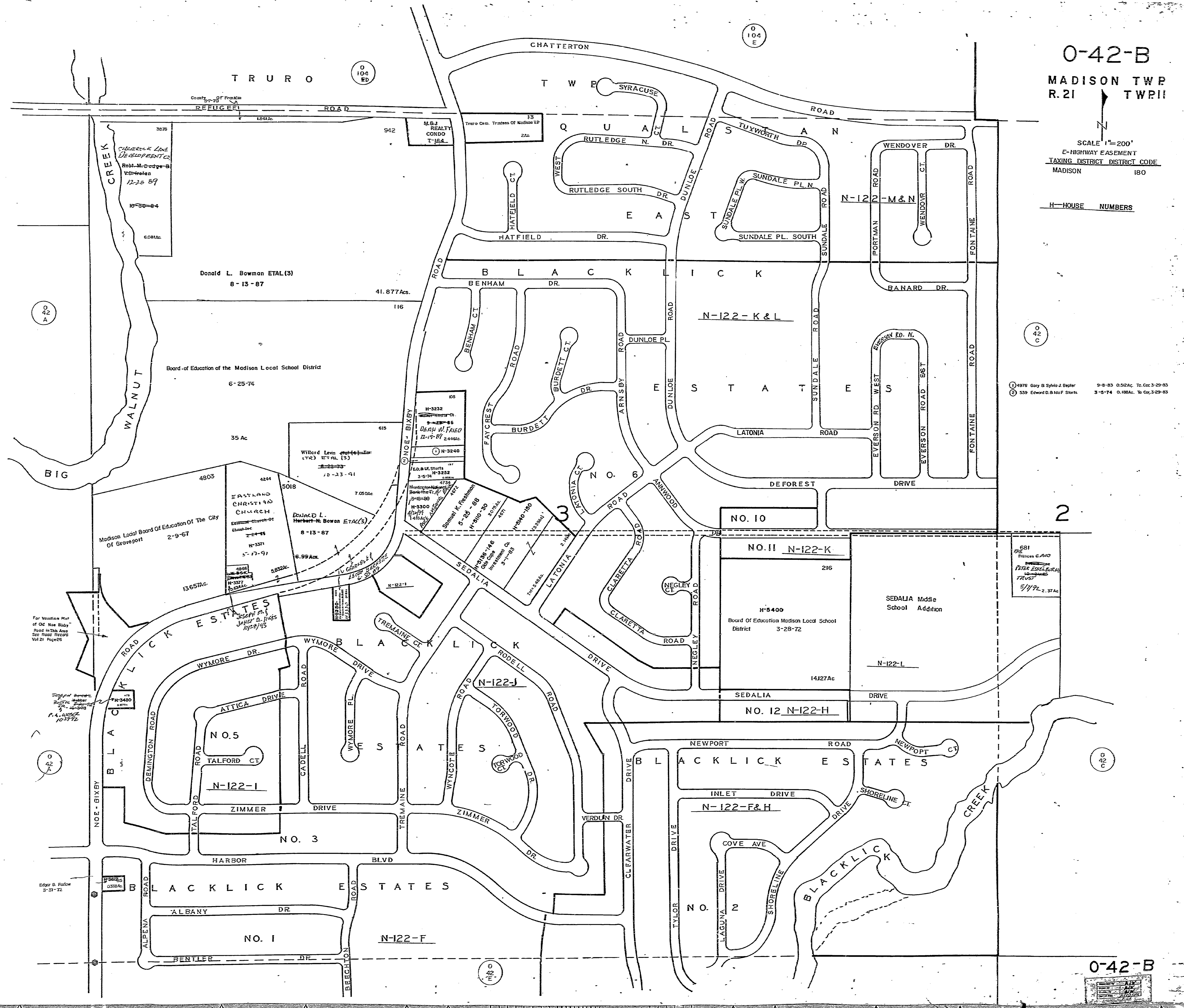


0-42-B
MADISON TWP
R. 21 TWP 11

SCALE 1"=200'
E-HIGHWAY EASEMENT
TAXING DISTRICT CODE
MADISON 180

H-HOUSE NUMBERS

- ① 4976 Guy B Sylvio J. Repler 9-8-83 0.52Ac. To. Co. 3-29-83
- ② 539 Edward D. B. 10 F. Starts 3-5-74 0.18Ac. To. Co. 3-29-83



3878
SCHARBROCK LANE
DEVELOPMENT CO.
Robt. M. Doughty - 91
V. B. Hefen
12-28-89

Donald L. Bowman ETAL (3)
8-13-87

Board of Education of the Madison Local School District
6-25-74

Madison Local Board of Education of The City
of Groveport 2-9-67

For Vacation Plat of
Old Noe Bixby
Road in This Area
See Plat Record
Vol 21 Page 26

Joseph ...
P.A. ...
10-2-72

Edgar B. Parlow
3-51-72

681
Frances C. ...
PETER ESSEL ...
TRUST
5/17/72 2.37 AC

NO. 11 N-122-K
216
H-5400
Board of Education Madison Local School
District 3-28-72

NO. 12 N-122-H
14127Ac

NO. 5
TALFORD CT
N-122-1
ZIMMER DRIVE

NO. 1
ALBANY DR
BENTLER DR
N-122-F

H-3232
DEAN W. FRIED
12-15-87 2.44Ac
H-3240
H-3252
H-3300
H-3311
H-3371

Willard Levin
ETAL (3)
10-23-91

Donald L. Bowman ETAL (3)
8-13-87

Samuel K. Frohman
5-25-89
H-3110-30
H-3140-150

NO. 3
TREM AINE ROAD
WYNCOLE ROAD
ZIMMER DRIVE

NO. 2
LAGUNA DRIVE
SHORELINE CT
N-122-F&H

NO. 2
LAGUNA DRIVE
SHORELINE CT

0 42 A

0 42 C

0 42 A

0 42 C

0 42 E

0-42-B