

MARION TOWNSHIP

0-24-B
HAMILTON TWP.
R.22 TWP 4

0
41
E

SCALE 1"=200'

TAXING DISTRICT DISTRICT CODE

HAMILTON TWP-OBETZ CORP.	152
HAMILTON TWP-OBETZ CORP-GROVEPORT MADISON S.D.	153

H-HOUSE NUMBERS
FRANKLIN COUNTY SURVEY MONUMENTS

TOWNSHIP

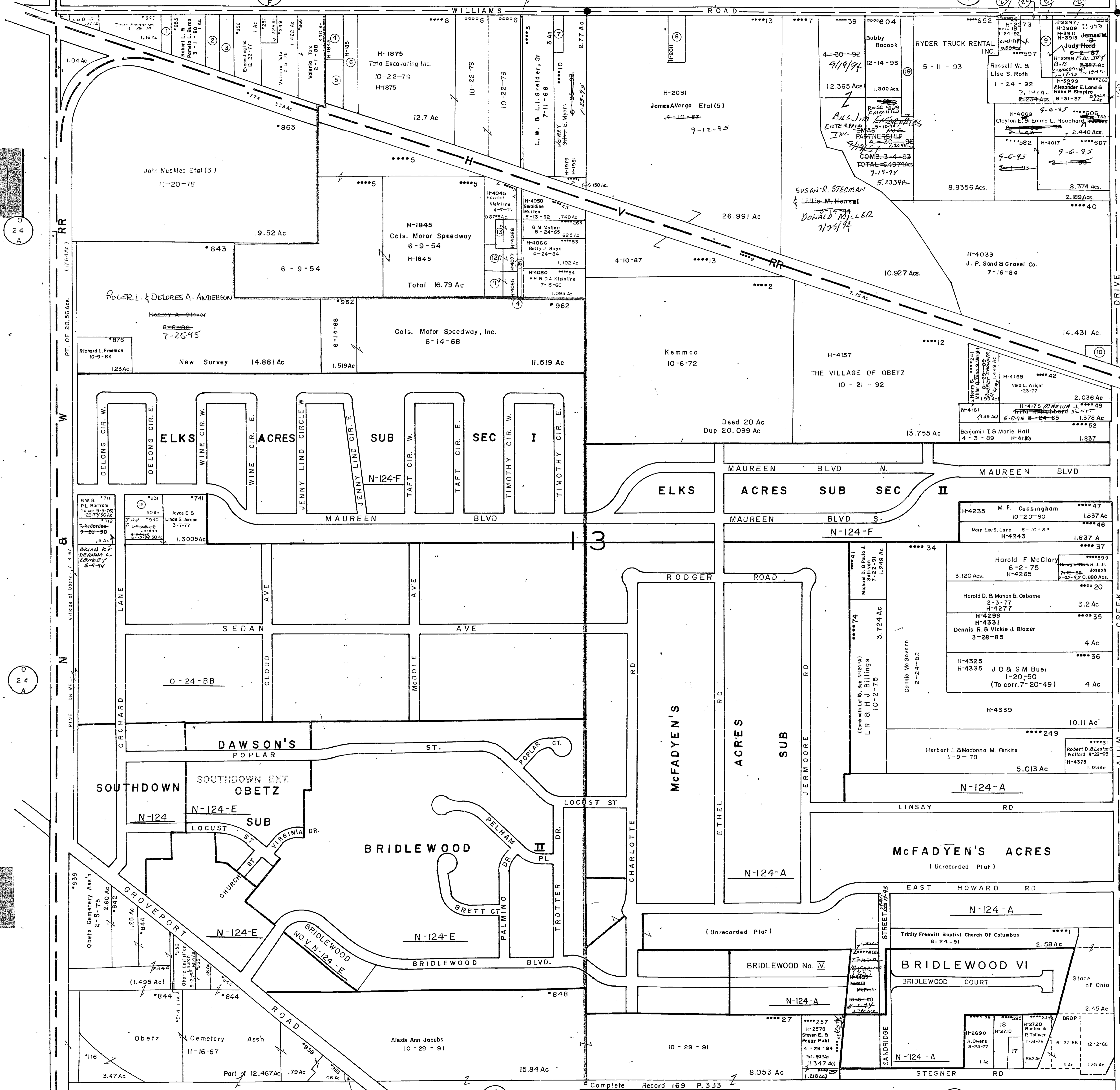
MADISON

0
44
A

- ① *961 Columbia Gas of Ohio 2-26-64 .25 Ac
- ② *667 R. L. Chaffin & Sandra M. Moore 7-8-92 .481 Ac
- ③ *857 L. A. McGovern 1-24-58 .518 Ac
- ④ *17 Donald E. B. Veronica E. Michel 5-28-66 .47 ac H-1845
- ⑤ *4 Anthony J. & Jean E. Oddi 1-21-92 .56 Ac
- ⑥ *30 Donald E. & Veronica E. Michel 5-28-86 1 Ac
- ⑦ *16 MARY A. FISKE 3-2-75 .23 Ac H-1975
- ⑧ *48 M. Vargo 7-10-78 .509 Ac
- ⑨ *55 JAMES H. & DORIS M. HORD 6-2-87 .442 Ac H-227 Ac.
- ⑩ *8 Robert E. Lovell 11-3-86 .25 Ac H-4115
- ⑪ *254 Linda L. Bowling 4-29-92 0.235 Ac
- ⑫ *255 Curtis C. Upton 1-1-93 0.303 Ac
- ⑬ *256 Jack H. & Geraldine F. Robinson 6-28-88 .221 Ac
- ⑭ *44 F. R. Kleinline 9-24-48 .77 Ac
- ⑮ *931 John O. & Mabel E. Chamblin 5-4-77 0.50 Ac
- 16 DEDICATION To Widen A Portion of KLEINLINE LANE
- 17 *22 Right, G. Dunlap 10-1-84 0.266 Ac.
- 18 *595 FAYE G. GENTNER 6-25-87 0.648 Ac.
- 19 *58 JAMES H. & DORIS M. HORD 6-2-87 0.738 Ac H-1975
- 20 DROP City of Columbus 9-18-54 0.283 Ac.
- 21 Drop " " 9-18-54 0.025 Ac.
- 22 Drop " " 11-28-94 0.022 Ac.
- 23 Drop " " 11-28-94 0.071 Ac.
- 24 Drop " " 11-28-94 0.071 Ac.
- ⑲ BRIDLEWOOD VIII 12-27-94 0.094 Ac.

0-24-B

JLR
16-13-78



Complete Record 169 P.333

0
24
D

0
24
D

0
24
A

0
24
A

0
24
A