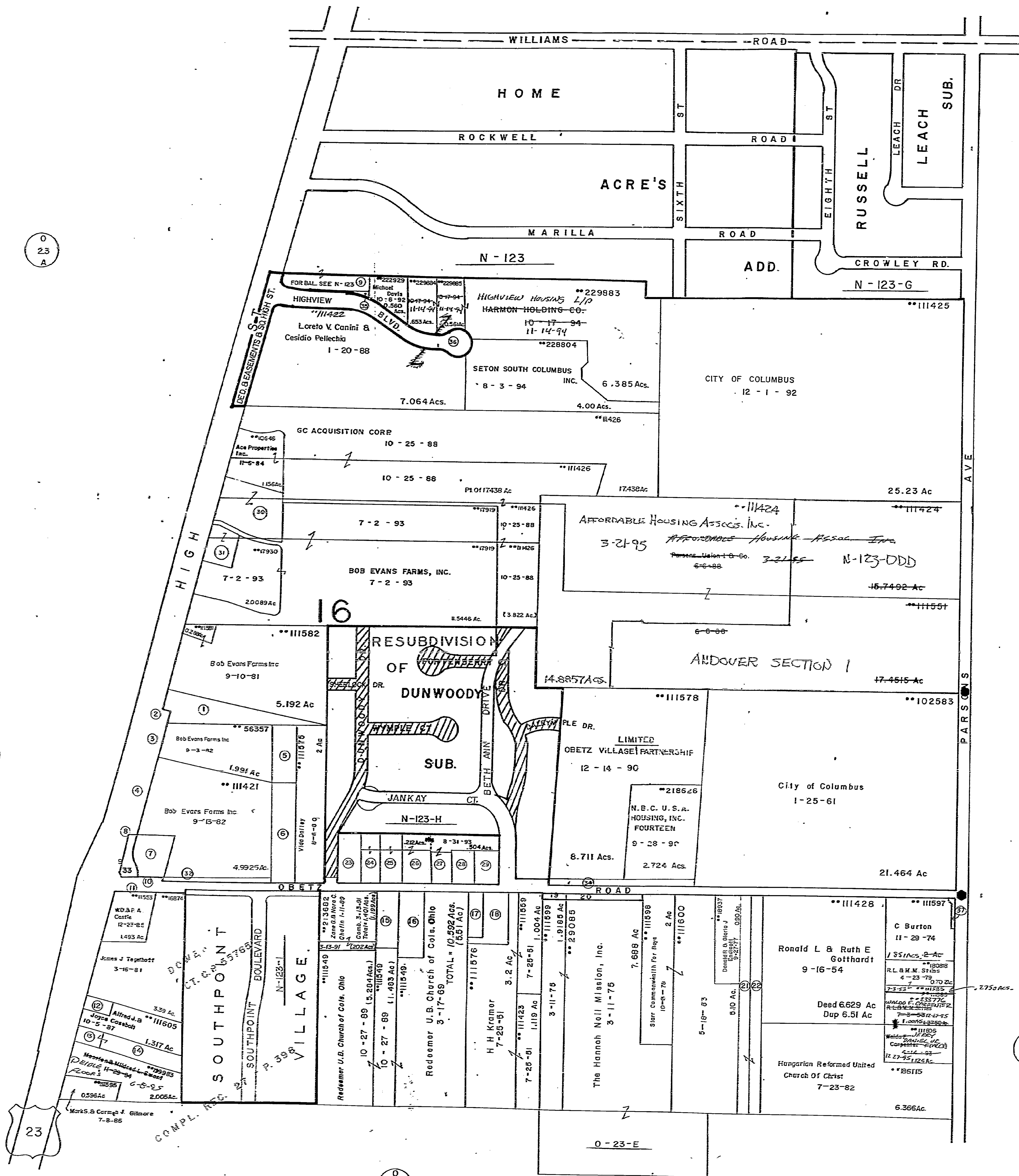


MARION TOWNSHIP

0-23-B
HAMILTON TWR
R. 22 TWP 4

SCALE 1"=200'
E-HIGHWAY EAST-WEST
TAXING DISTRICT CODE
*COLUMNS 010
H-HOUSE NUMBERS

FRANKLIN COUNTY SURVEY MONUMENTS



1	**11560	Bob Evans Farms Inc.	9-3-92	1.095 Ac
2	**4575	Bob Evans Farms Inc.	9-3-92	.235
3	**4518	"	"	.301
4	**4570	"	9-13-92	.735
5	**11588	R.T. & B.A. Soms	10-25-72	.5575
6	**11574	Ronald T. & B.A. Soms	7-3-78	1.00
7	**16530	EMRO MARKETING COMPANY	1-12-89	.608
8	**4564	Bob Evans Farms Co.	9-13-82	.058
9	**1470	BOARD OF TRS. COLS. METRO LIBRARY	7-13-89	0.737Ac.
10	DROP	CITY OF COLS.	7-30-71	.076
11	Drop	"	8-26-69	.117
12	**11572	Gloria G. Ball	12-13-74	.253
13	**11571	Lonia M. & Helen Adams	12-9-57	.279Ac.
14	**11586	"	"	.55
15	**18071	Dale D. & Felicia M. Deibte	10-21-86	.517
16	**11583	Anna J. Blair	1-7-87	.75
17	**11569	John & Rebecca S. Smitherman	6-7-94	.275
18	**11539	Frank C. Jr. & Joanne Hanson	12-29-93	.662
19	Drop	City of Cols	3-24-75	.0815
20	Drop	"	3-24-75	.312
21	**11601	Guy Mitche II	9-24-91	1.
22	**11604	Timothy E. & Vickie A. Kelley	2-23-92	1.
23	**11564	"	12-13-74	0.529 Ac
24	**14301	Lawrence L. & Sharon L. Kelley	8-10-76	0.413 Ac.
25	**117081	George R. & Carole F. Goodfleisch	4-9-76	0.495 Ac.
26	**159690	Louis J. & J.L. Gool	9-27-93 COMB. 0.212Ac. TOT=0.642Ac. 9-22-93	
27	**18168	Steven R. Kelley	4-17-93	0.776Ac.
28	**103322	Jos. W. & G.M. Watkins	8-27-70	0.344Ac.
29	**128878	Judi M. Dean	5-3-93	0.344Ac.
30	**11066	SOUTHERN OHIO RESTAURANT CORP	12-10-87	1.353Ac.
31	**193933	City of Columbus	12-22-88	0.636 Ac.
32	Drop	City of Cols	6-22-82	0.437Ac.
33	**211624	EMRO MARKETING COMPANY	1-12-89	0.229 Ac.
34	Drop	CITY OF COLS. (H-WAY)	8-3-89	0.566 Ac.
35	**222034	BOARD OF TRS. COLS. METROPOLITAN LIBRARY	5-27-92	0.013 Ac.
36	HIGHVIEW BLVD. & S. HIGH ST. DED. & EASEMENTS			
37	Drop	City of Columbus	12-13-74	0.149Ac.

0-23-B

