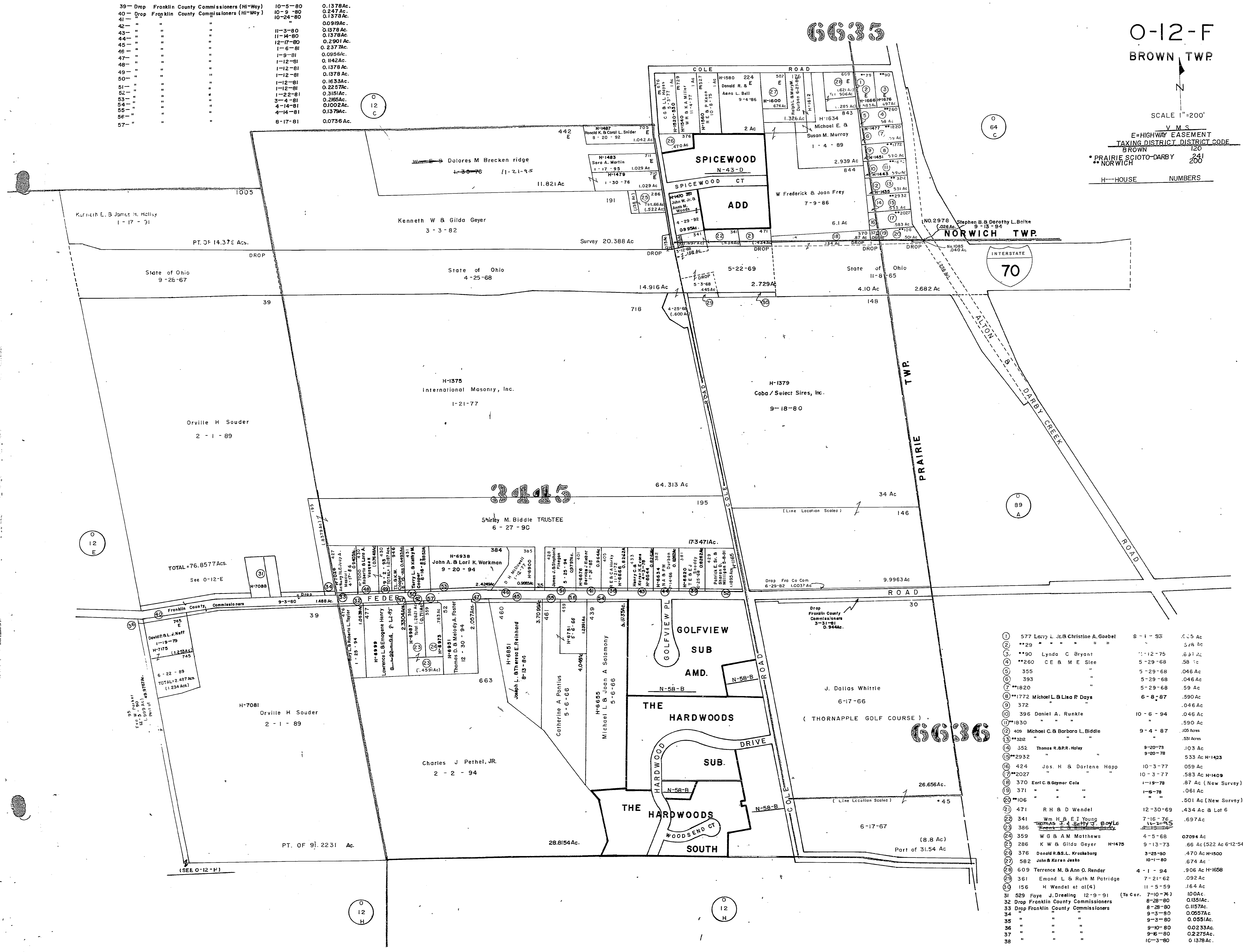


39 - Drop	Franklin County Commissioners (H-Way)	10-5-80	0.1378Ac.
40 - Drop	Franklin County Commissioners (H-Way)	10-9-80	0.247Ac.
41 - "	"	10-24-80	0.1378Ac.
42 - "	"	"	0.0919Ac.
43 - "	"	11-3-80	0.1378Ac.
44 - "	"	11-14-80	0.1378Ac.
45 - "	"	12-17-80	0.2901Ac.
46 - "	"	1-6-81	0.2377Ac.
47 - "	"	1-9-81	0.0956Ac.
48 - "	"	1-12-81	0.142Ac.
49 - "	"	1-12-81	0.1378Ac.
50 - "	"	1-12-81	0.1633Ac.
51 - "	"	1-12-81	0.2257Ac.
52 - "	"	1-22-81	0.3151Ac.
53 - "	"	3-4-81	0.265Ac.
54 - "	"	4-14-81	0.1002Ac.
55 - "	"	4-14-81	0.1378Ac.
56 - "	"	"	"
57 - "	"	8-17-81	0.0736Ac.

0-12-F  
BROWN TWP

SCALE 1"=200'

V.M.S.  
E-HIGHWAY EASEMENT  
TAXING DISTRICT CODE  
BROWN 120  
NORWICH 200  
H-HOUSE NUMBERS



1	577 Larry L. & Christine A. Goebel	8-1-88	.035 Ac
2	**29	"	.578 Ac
3	**90 Lynda C Bryant	11-12-75	.637 Ac
4	**260 C E B M E Stee	5-29-68	.58 Ac
5	355	5-29-68	.046 Ac
6	393	5-29-68	.046 Ac
7	**1820	5-29-68	.59 Ac
8	**1772 Michael L & Lisa R Days	6-8-87	.590 Ac
9	372	"	.046 Ac
10	396 Daniel A. Runkle	10-6-94	.046 Ac
11	**1830	"	.590 Ac
12	409 Michael C & Barbara L. Biddle	9-4-87	.531 Acres
13	**322	"	.531 Acres
14	352 Thomas R. R.R. Haley	9-20-78	.103 Ac
15	**2932	9-20-78	.533 Ac H-1423
16	424 Jas. H & Darlene Hopp	10-3-77	.059 Ac
17	**2027	10-3-77	.583 Ac H-1409
18	370 Earl C & Gaymor Cole	1-19-78	.87 Ac (New Survey)
19	371	1-6-78	.061 Ac
20	**106	"	.501 Ac (New Survey) H-1395
21	471 R H & D Wendel	12-30-69	.434 Ac & Lot 6
22	341 Wm H. B. E. I. Young	7-16-76	.697 Ac
23	386 Thomas J & Betty J. Boyle	11-2-75	"
24	359 W G & A M Matthews	4-5-68	.07094 Ac
25	286 K W & Gilda Geyer H-1475	9-13-73	.66 Ac (522 Ac 6-12-54)
26	376 Donald R. S. L. Kruehburg	3-25-80	.470 Ac H-1500
27	582 John & Karen Janko	10-1-80	.674 Ac
28	609 Terrence M. & Ann O. Render	4-1-94	.906 Ac H-1658
29	361 Emond L. & Ruth M. Partridge	7-21-62	.092 Ac
30	156 H. Wendel et al(4)	11-5-59	.164 Ac
31	529 Faye J. Dreeing 12-9-91 (To Cor.)	7-10-74	.100Ac.
32	Drop Franklin County Commissioners	8-28-80	.01351Ac.
33	Drop Franklin County Commissioners	8-28-80	.01157Ac.
34	"	9-3-80	.0057Ac.
35	"	9-3-80	.00551Ac.
36	"	9-10-80	.02333Ac.
37	"	9-6-80	.02275Ac.
38	"	10-3-80	0.1378Ac.

0-12-F