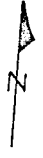


O-109-C
WASHINGTON TWP.



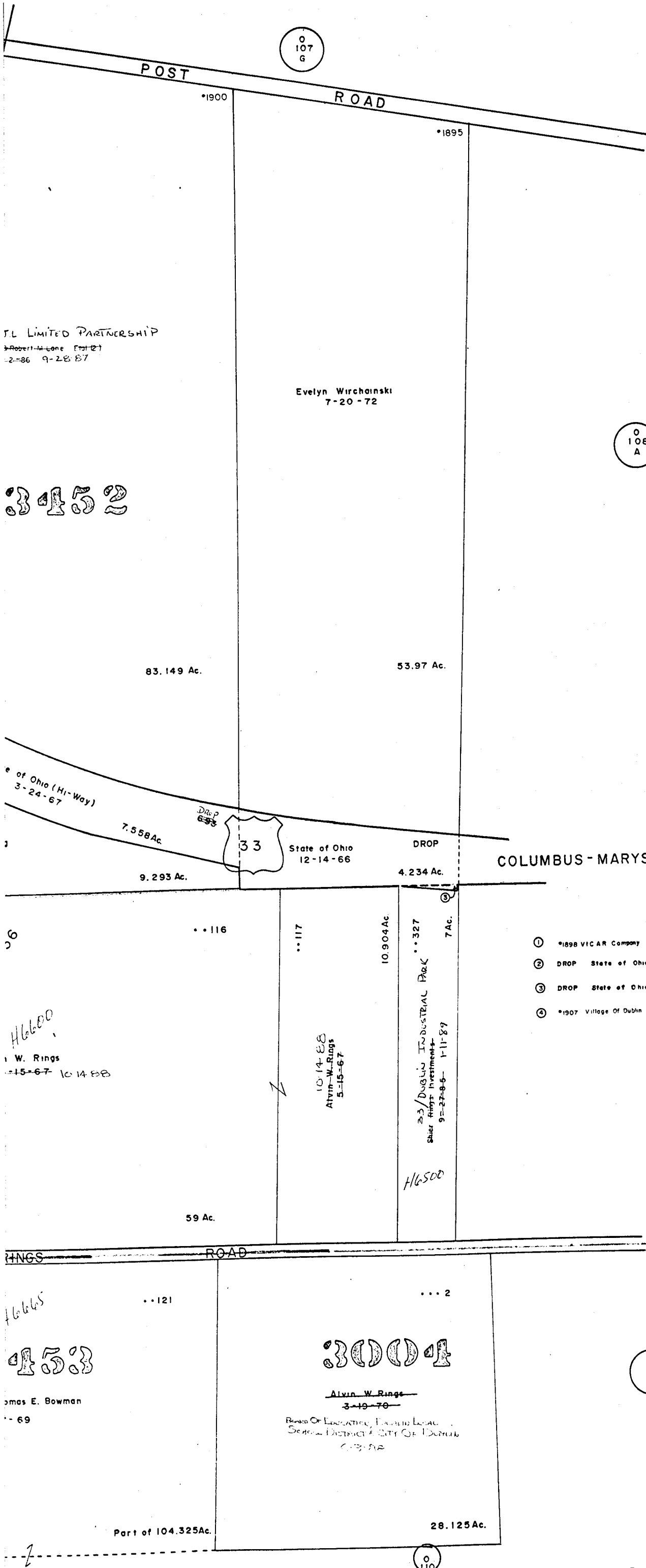
SCALE 1"=200'

VMS

E= HIGHWAY EASEMENT

TAXING DISTRICTS	DISTRICT CODE
WASHINGTON TWP.	270
• WASH. TWP.-DUBLIN CORP.	273
•• WASH. TWP.-HILLIARD S.D.	272
••• WASH. TWP.-DUBLIN CORP.-HILLIARD S.D.	274

H--- HOUSE NUMBERS



JL LIMITED PARTNERSHIP
Robert H. Lane ET AL
2-86 9-28-87

Evelyn Wirchanski
7-20-72

3452

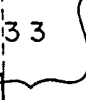
83.149 Ac.

53.97 Ac.

e of Ohio (Hi-Way)
3-24-67

7.558 Ac.

Drop
635



State of Ohio
12-14-66

DROP

4.234 Ac.

COLUMBUS-MARYSVILLE ROAD

9.293 Ac.

6

••116

••117

10.904 Ac.

••327

7 Ac.

- ① •1898 VICAR Company 12-16-85 1.467 Ac.
- ② DROP State of Ohio 3-1-68 .838 Ac.
- ③ DROP State of Ohio 5-17-67 .096 Ac.
- ④ •1907 Village Of Dublin 12-30-85 0.721 Ac.

H6600
W. Rings
15-67 10-14-88

10-14-88
Alvin W. Rings
5-15-67

33/DUBLIN INDUSTRIAL PARK
Shur Rings Investments
9-27-86-1-11-89

H6500

59 Ac.

RINGS ROAD

H6665
453

••121

••• 2

3004

Alvin W. Rings
3-19-78

BOARD OF EDUCATION, EXCELLENCE LEADERSHIP
SCHOOL DISTRICT # CITY OF DUBLIN
OHIO

Thomas E. Bowman
-69

Part of 104.325 Ac.

28.125 Ac.

1584

O-109-C

