

0 40 U

T.12N. T.16N.

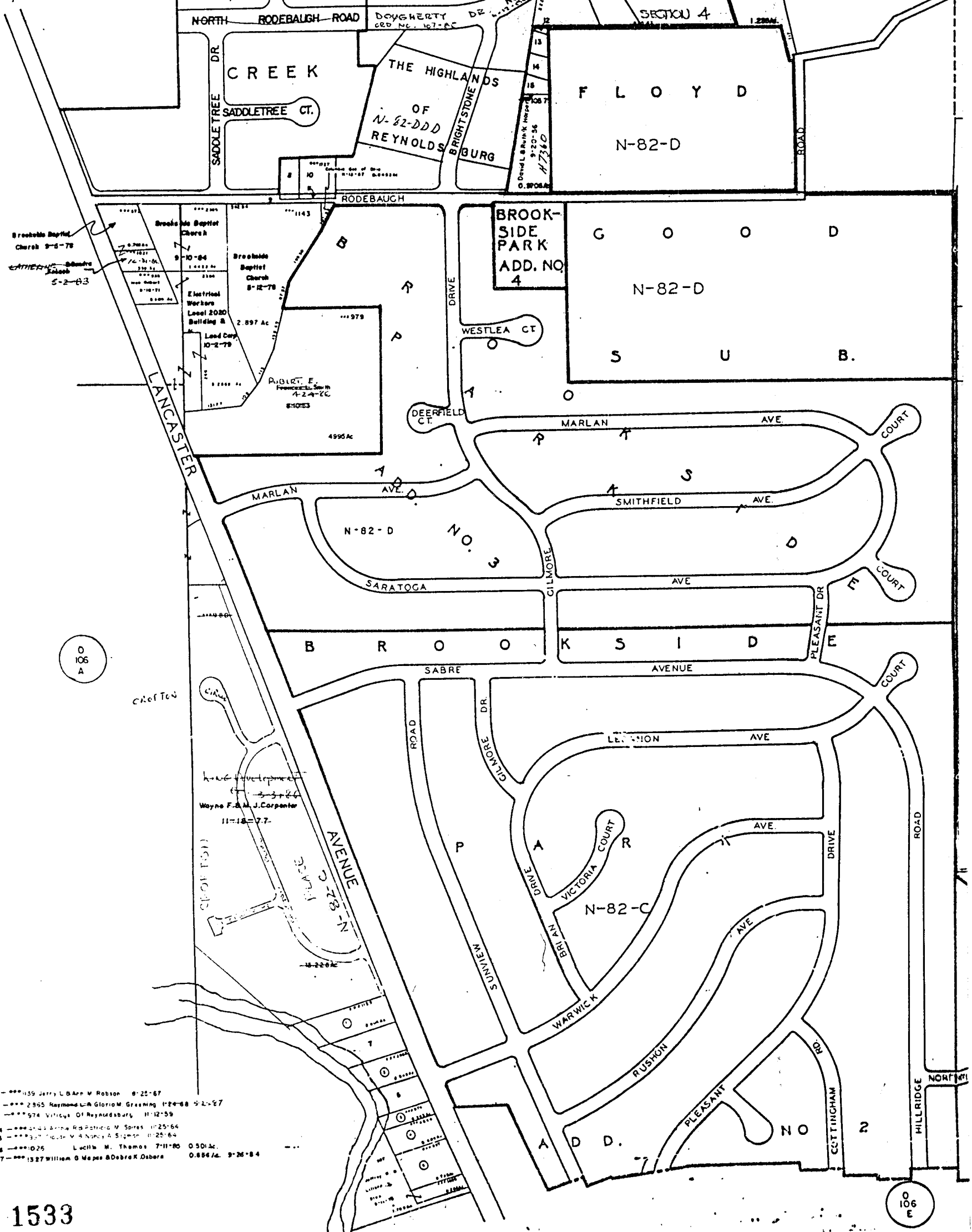
R.21W. R.20W.

WILLIAM FANNIN BUILDERS
Joseph F. & Louise H. Dever
10-21-77 G 2-87

0 106 A

0 106 Z

27.375 Ac



- 1-***159 Jerry L. & Ann M. Robson 8-25-87
- 2-***2355 Raymond & Gloria M. Gresham 11-18-88 5-2-87
- 3-***574 Village Of Reynoldsburg 11-12-59
- 4-***211 Arnie & Patricia M. Spies 11-25-64
- 5-***211 Arnie & Patricia M. Spies 11-25-64
- 6-***1025 Lucille M. Thomas 7-11-80 0.501 Ac.
- 7-***1327 William O. & Debra K. Osborn 0.686 Ac. 9-26-84

0 106 E

40
M

TWP

6916
6291

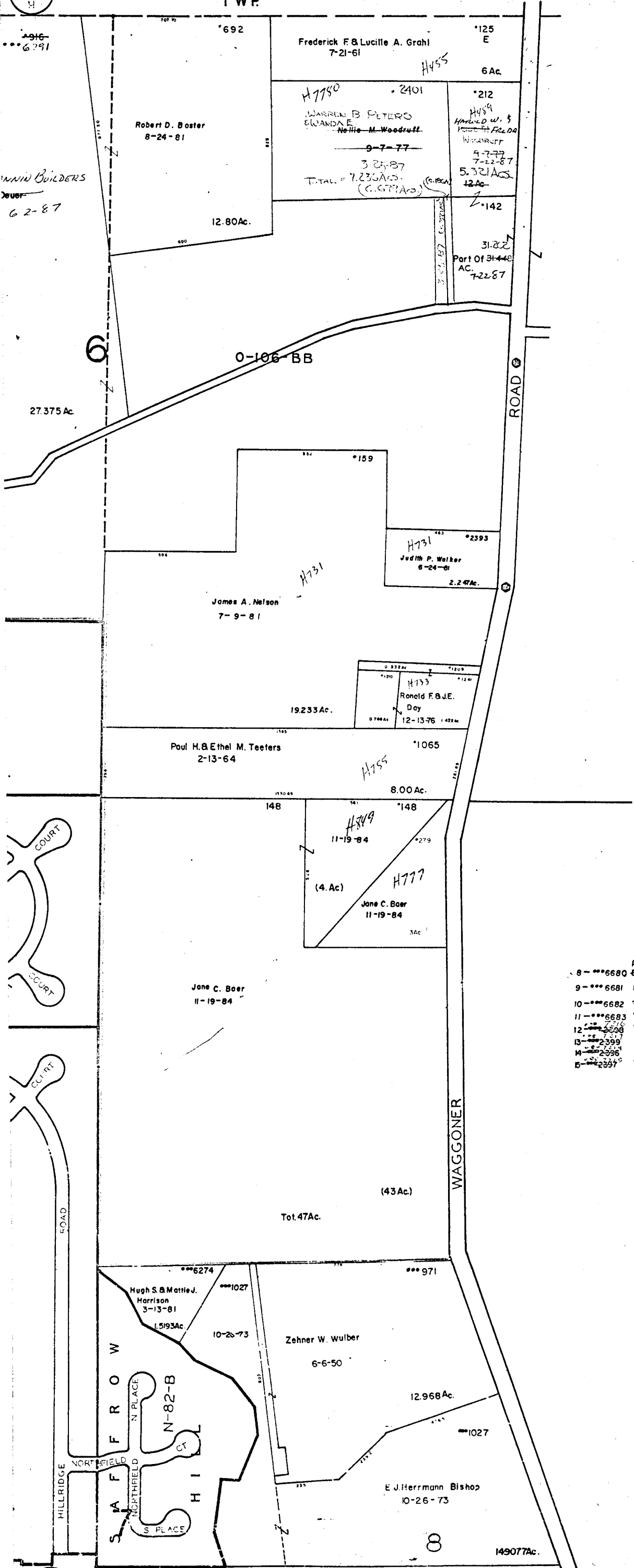
MAIN BUILDERS
6-2-87

COURT

COURT

COURT

0
106
E



0-106-B

TRURO TWP.
R.20-21 TWP.12-16

SCALE 1"=200'
E=HIGHWAY EASEMENT
TAXING DISTRICT DISTRICT CODE
TRURO REYNOLDBURG SD. 263
CITY OF REYNOLDBURG 060

H--- HOUSE NUMBER
* - FURNISH COUNTY SURVEY RECORDS

0
106
C

8-6680	ROBERT E. & M.C. BELL 6-17-85	
8-6680	Brod C. & Martha K. Gardner 6-20-84	0.193 Ac.
9-6681	U.S. Investment Co. 8-9-84	0.048 Ac.
10-6682	Wm L. GRASSER 9-17-87	0.346 Ac.
11-6683	U.S. INVESTMENT CO. 8-9-83	0.0864 Ac.
12-6686	" " 9-23-85	0.0143 Ac.
13-6687	" " " "	0.0883 Ac.
14-6688	" " " "	0.1104 Ac.
15-6689	" " " "	0.1064 Ac.

0-106-B

1534