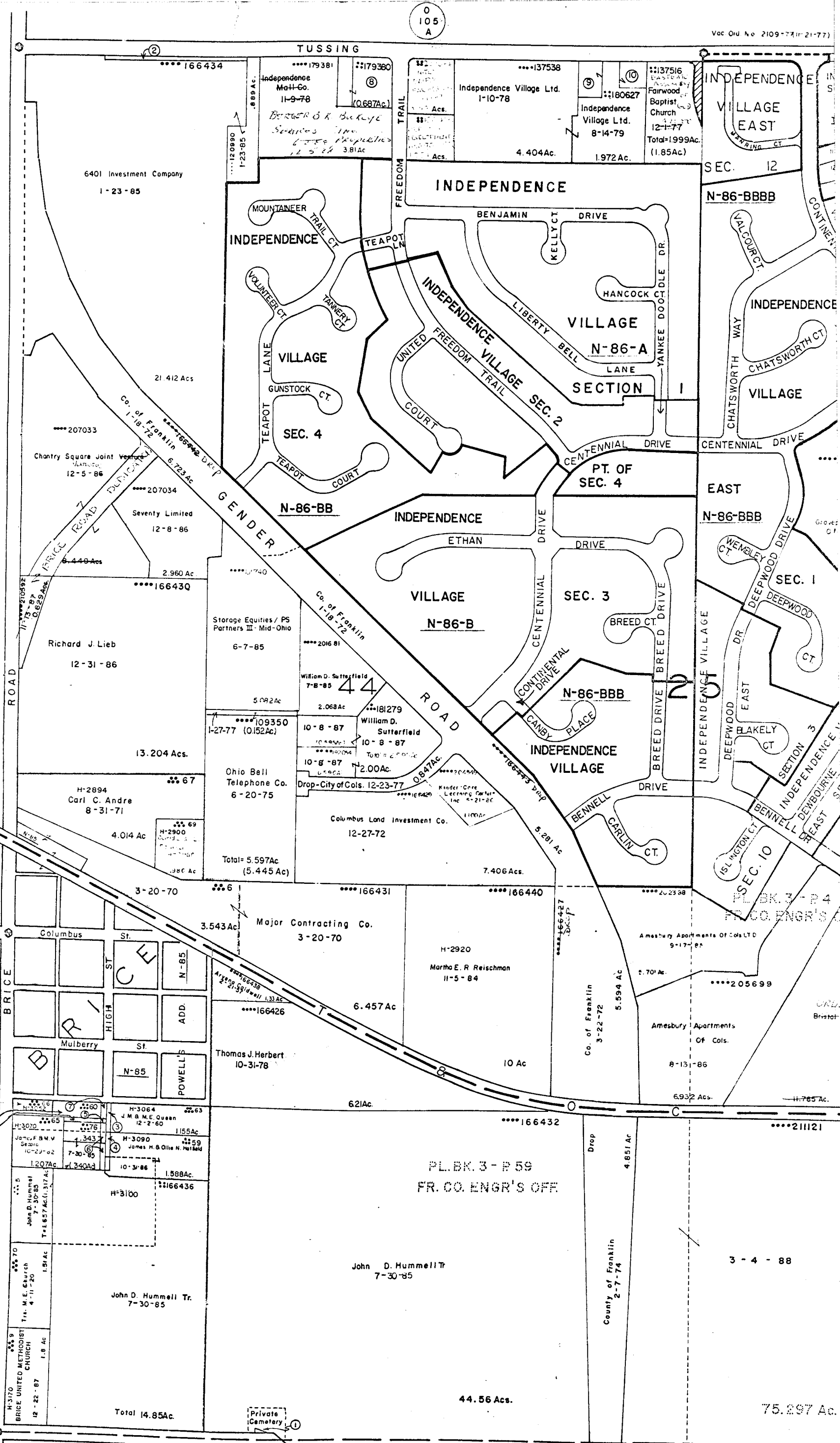


0 105 A

0 104 F

0 104 F



PL. BK. 3 - P 59  
FR. CO. ENGR'S OFF

John D. Hummel Tr  
7-30-85

44.56 Ac.

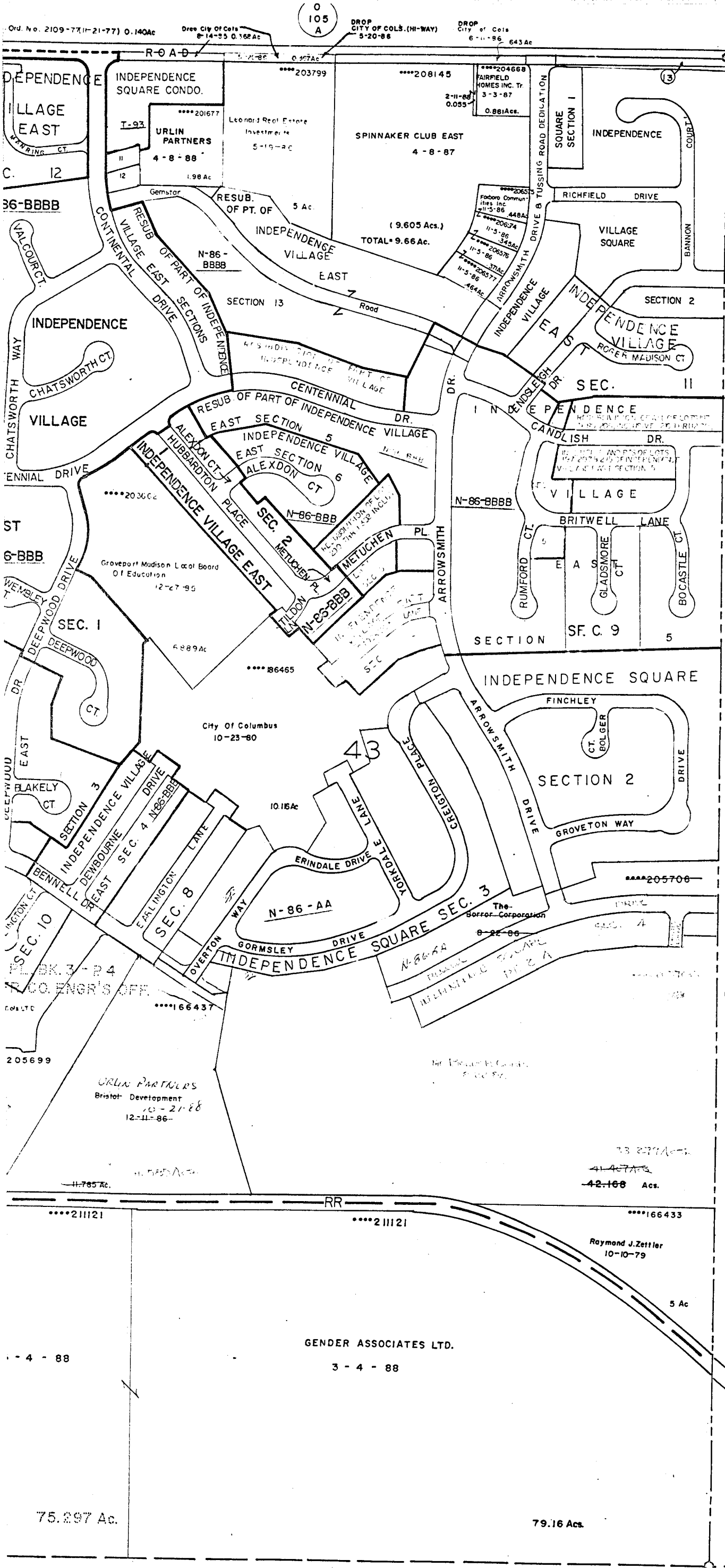
75.297 Ac.

Total 14.85Ac.

1527

REFUGEE RD.

MADISON



O-105-B  
TRURO TWP.  
R. 21 TWP. 12

SCALE 1" = 200'  
E=HIGHWAY EASEMENT  
TAXING DISTRICT, DISTRICT CODE  
CITY OF COLS. GROVEPORT-MADISON S.D. 530  
TRURO-BRICE CORP. 264  
FRANKLIN COUNTY SURVEY MONUMENT  
H---HOUSE NUMBERS

FAIRFIELD COUNTY

- ① Drop-City of Cols. 6-21-76 .066Ac.
  - ② Drop-City of Cols. 7-19-77 0.515Ac.
  - ③ Drop-Village of Brice 5-24-78 0.055Ac.
  - ④ " " " " " " 0.073Ac.
  - ⑤ " " " " " " 0.011Ac.
  - ⑥ " " " " " " 0.086Ac.
  - ⑦ " " " " " " C. 298Ac.
- NOTE: Nos. 3, 4, 5, 6, 7, Are Dedicated As High Street In The Village Of Brice
- ⑧ ::179380 The Fifth Third Bank Of Cols 2-13-86 1Ac
  - ⑨ ::137539 Cardinal Industries Development Co. 3-7-79 .288Ac
  - ⑩ ::180628 " " " " " " .255Ac
  - 11 -::202840 Ronald P & Nancy A. Zeller 6-8-87 0.206Ac
  - 12 -::202069 " " " " " " 0.224Ac
  - 13\*\* Drop-City of Cols. (HI-Way) 8-15-86 0.578 Ac

75.297 Ac.

79.16 Ac.

O-105-B

1528

TWP.

GENDER ASSOCIATES LTD.  
3-4-88

Raymond J. Zettler  
10-10-79

URLIN PARTNERS  
Bristol Development  
10-21-88  
12-11-86

CO. ENGR'S OFF.

205699

211121

211121

166433

4-88