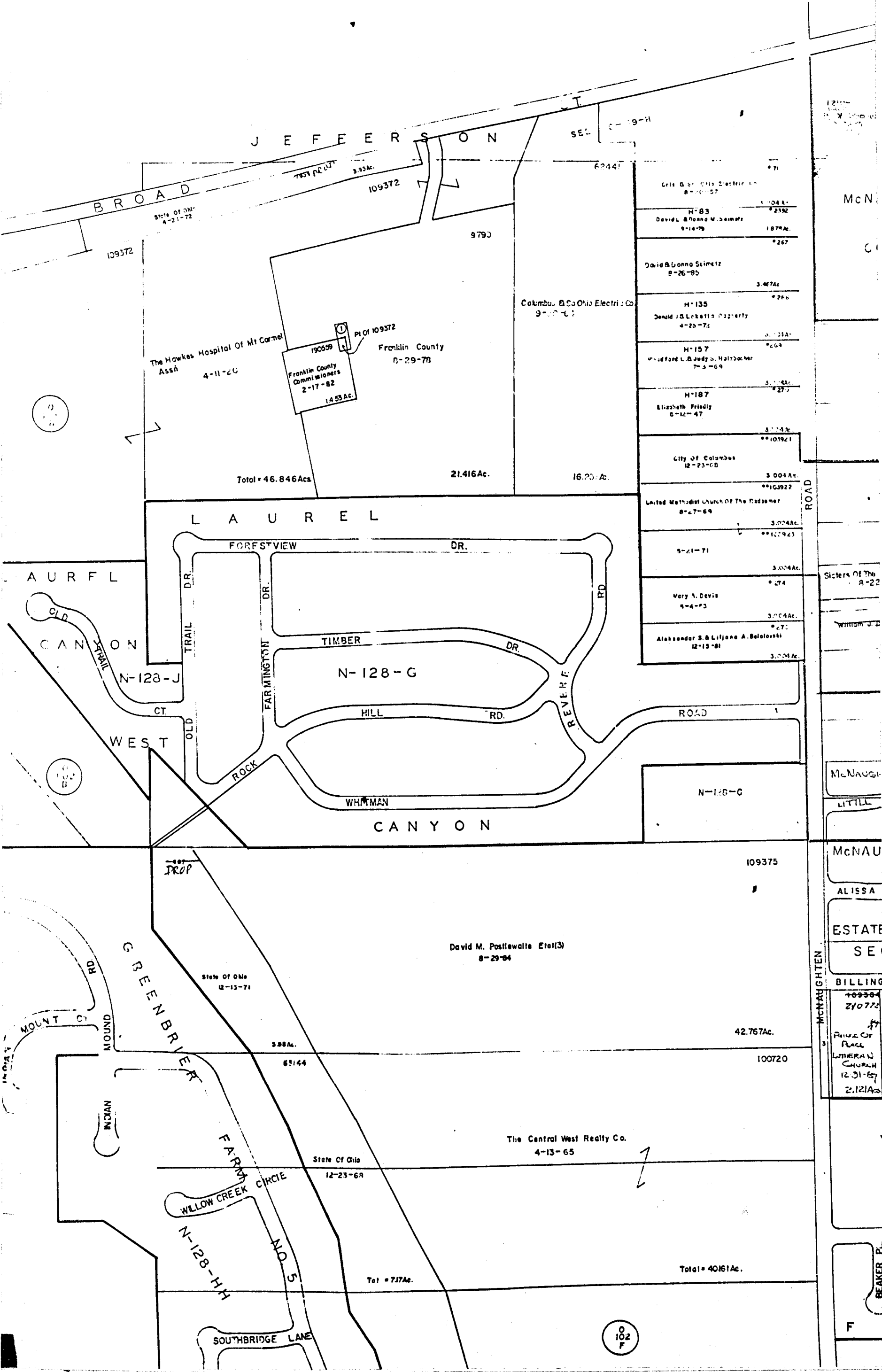


1- 190565 Hawkes Hospital Of Mt Carmel 2-17-82 0.074Ac  
 2- 190855 Smith Farms Condominium Assn Inc. Etol(2) 3-26-82 0.501  
 3- DROP - CITY OF COLS (H-WAY) 9-9-87 0.404Ac.



|  |          |
|--|----------|
| City of Columbus<br>12-23-68                       | 3.004Ac. |
| United Methodist Church of The Redeemer<br>8-27-69 | 3.004Ac. |
| 5-21-71  | 3.004Ac. |
| Very A. Davis<br>4-4-73                            | 3.004Ac. |
| Alexander S. B. Lijana A. Belostvski<br>12-15-81   | 3.004Ac. |
| City of Columbus<br>12-23-68                       | 3.004Ac. |
| Elizabeth Friedly<br>6-12-47                       | 3.004Ac. |
| Woodford L. & Judy S. Holzbacher<br>7-3-69         | 3.004Ac. |
| Donald J. Lickells Property<br>4-25-72             | 3.004Ac. |
| David & Lonna Stimetz<br>8-26-85                   | 3.004Ac. |
| David L. & Donna M. Seimetz<br>9-14-79             | 3.004Ac. |
| Griffith Electric Co.<br>8-10-57                   | 3.004Ac. |

McN  
 C  
 Sicters Of The  
 R-22  
 William J. B  
 McNAUGH  
 LITILL  
 McNAU  
 ALISSA  
 ESTATE  
 SE  
 BILLING  
 109304  
 210775  
 PRIZE OF  
 PLACE  
 LUTHERAN  
 CHURCH  
 12-31-67  
 2.121Ac  
 McNAUGHTEN  
 BEAKER PL  
 F

0-102-C

TRURO  
R.21

TWR  
TWR

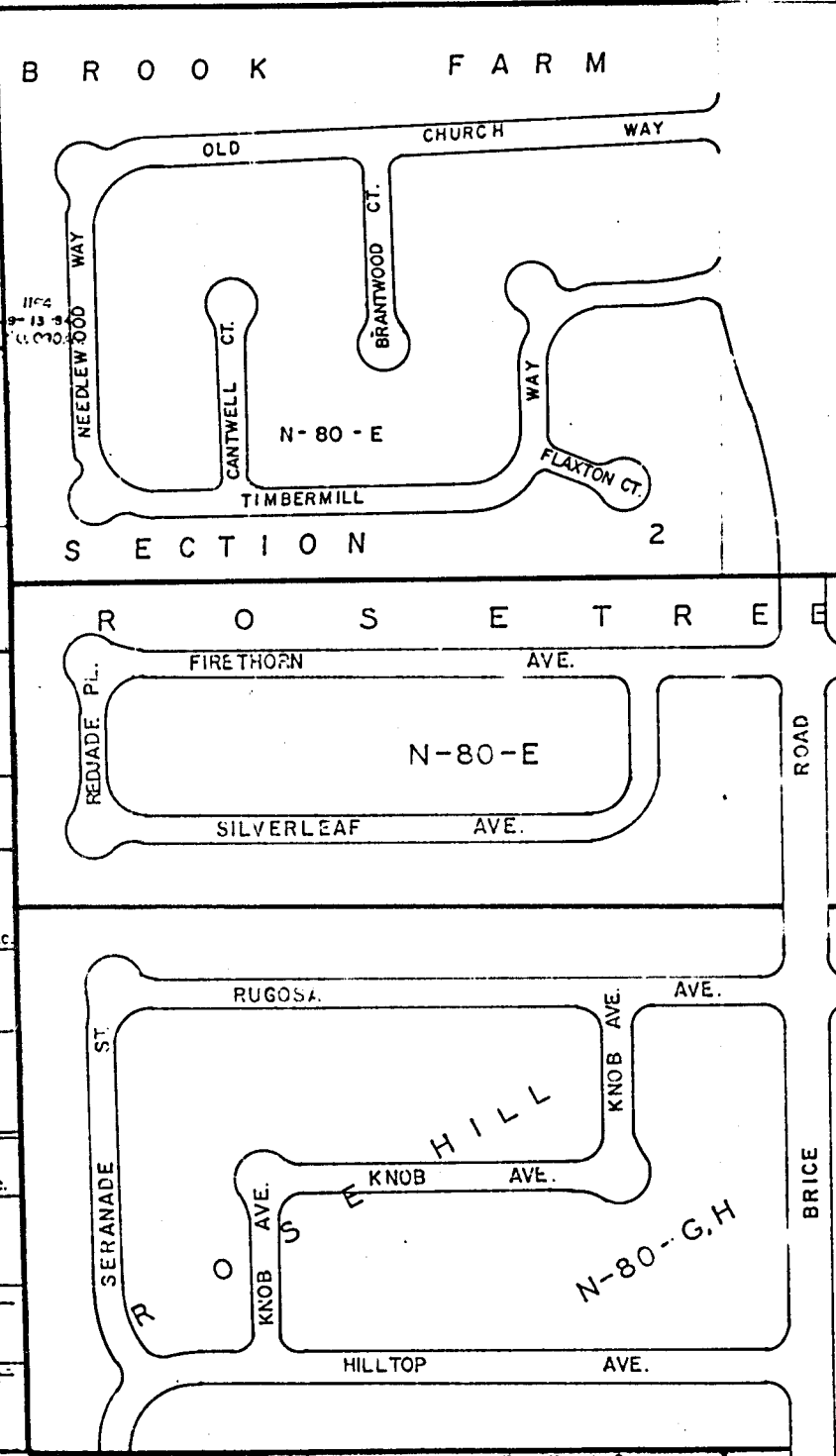


SCALE 1"=200'  
TAXING DISTRICT DISTRICT CODES  
COLUMBUS 010  
• TRURO REYNOLDSBURG S.D. 263  
• COLUMBUS REYNOLDSBURG S.D. 550  
•• CITY OF REYNOLDSBURG 060  
H---HOUSE NUMBERS

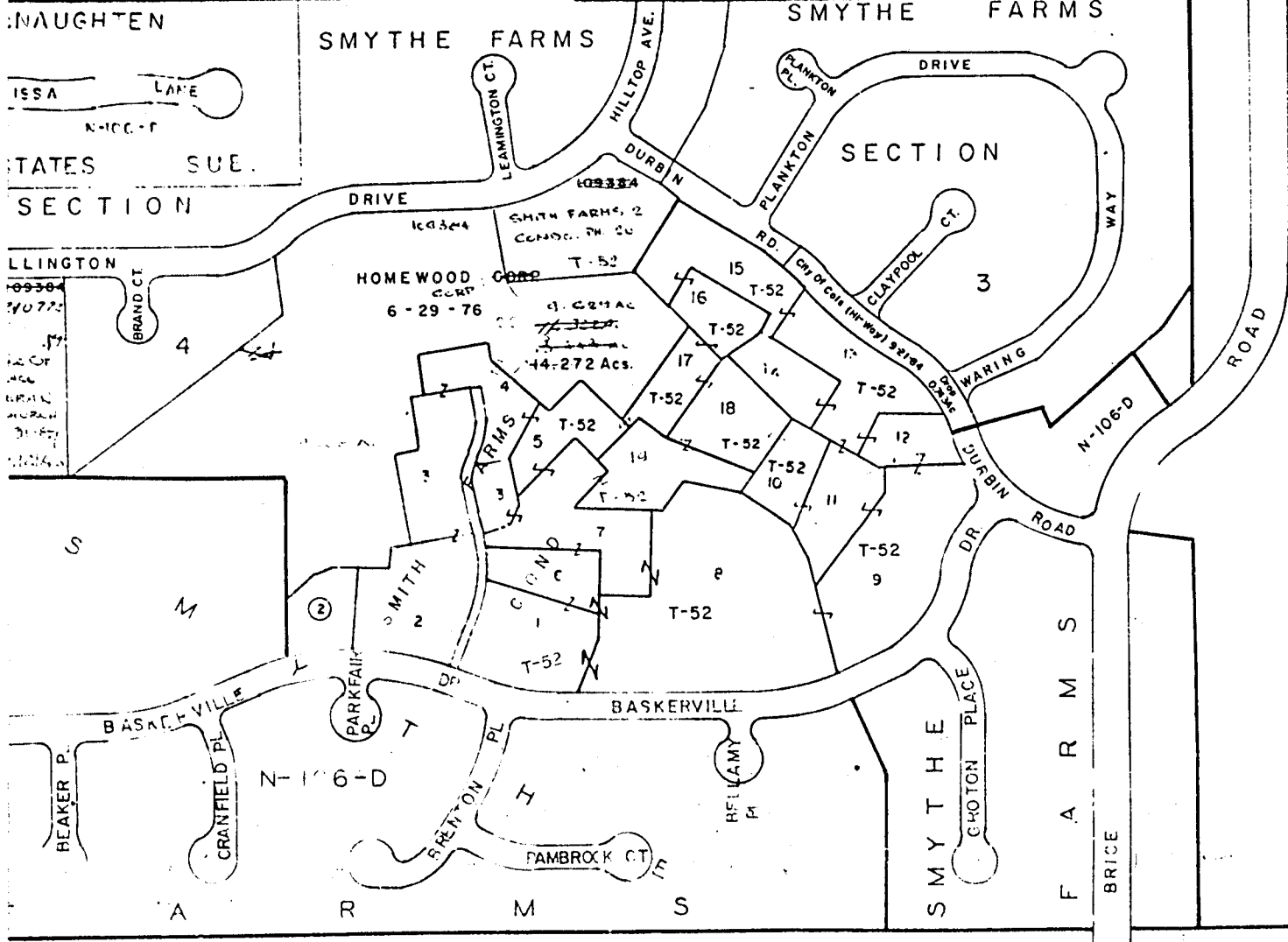
59  
J

Columbus  
6-71  
9Ac.  
TWR

|  |  |
|--|--|
| McNAUGHTEN COMMONS<br>CONDOMINIUM<br>T-148                           |  |
| H-162<br>Otis B. & Rena C. Harris<br>10-26-61                        | *887<br>10Ac.                                |
| H-198<br>Bonnie J. Miller<br>2-18-72                                 | *913<br>7.5Ac.                               |
| Marcel J. Sherry J. Doreault<br>6-14-74                              |  |
| **146751<br>7.5Ac.   |  |
| 8-22-77<br>2.453Ac.<br>Of The Holy Cross Inc.<br>8-22-77<br>2.534Ac. | 11-15-71<br>2.452Ac.<br>**146754<br>**146753 |
| The Hawks Hospital Of Mt Carmel<br>11-16-71<br>3.234Ac.              |  |
| **146755<br>5.02Ac.  |  |
| Jane L. Smith et.al (4)<br>8-29-79<br>5.834Ac.                       |  |
| **190923<br>3.434Ac.   |  |
| **190921<br>5.033Ac.   |  |
| **190920<br>5.052Ac.   |  |
| **190922<br>5.070Ac.   |  |



106  
A



1486

0-102-C