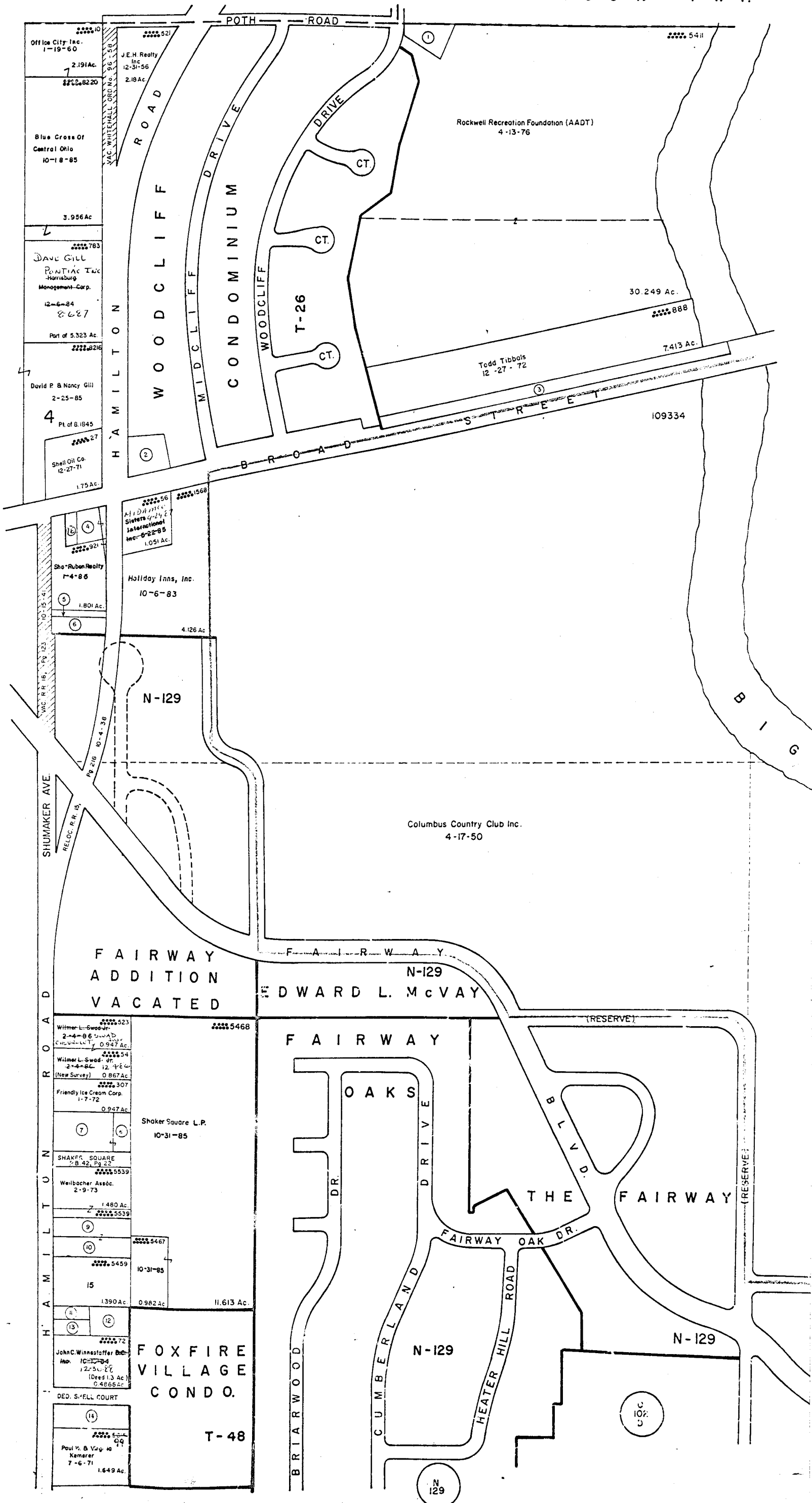


0
59
J

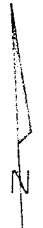
0
39
J

1310



V P.

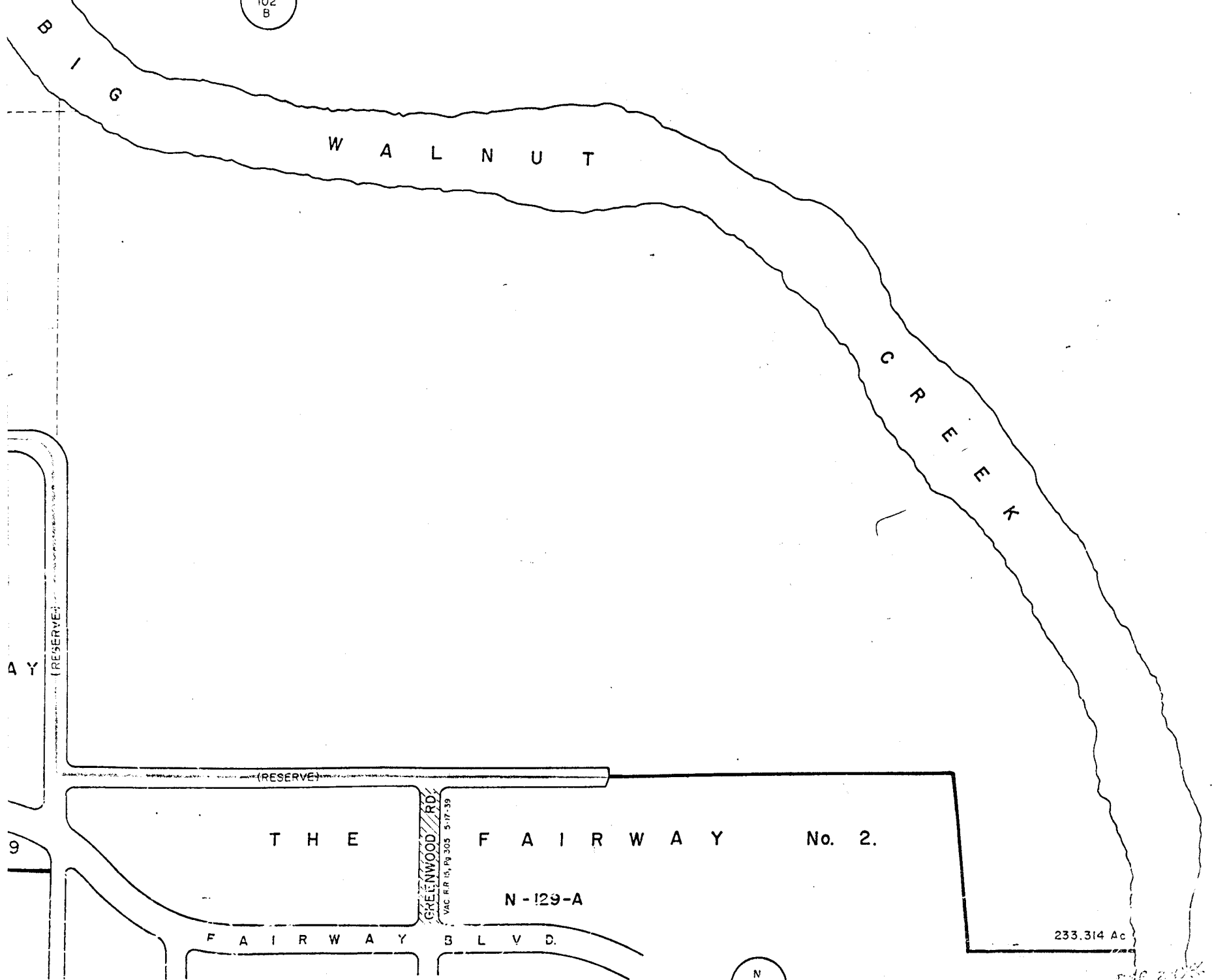
0-102-A
TRURO TWP
R. 21 TWP 12



Scale: 1"=200'
E = HIGHWAY EASEMENT
TAXING DISTRICTS DISTRICT CODE
COLUMBUS 010
CITY OF WHITEHALL 090

1	526	CLY R. III. & K.L. MUFFITT 1-9-89	4-12-74	0.373 Ac.
2	5885	Jay A. & Janet Brand	10-22-63	(0.87 Ac.)
3	1584	Marathon Oil Co.	8-11-76	1.398 Ac.
4	1974	City of Whitehall	7-9-52	0.413 Ac.
5	5408	Sun Oil Co.	10-25-85	0.148 Ac.
6	5331	S. C. DEBOW ASSOC'S	" " " "	0.244 Ac.
7	60	Dawson Equities	6-4-76	0.78 Ac.
8	58	Aglar-Davidson Sporting Goods Inc.	6-4-76	0.356 Ac.
9	197	" " " "	10-23-88	0.501 Ac.
10	43	Jules & Nita Sokol	12-20-78	0.616 Ac.
11	76	" " " "	10-19-67	0.172 Ac.
12	75	Darsen Watts	12-16-58	0.388 Ac.
13	1736	" " " "	12-16-58	0.3046 Ac.
14	3641	Doris Lubin & Marjorie Gross	8-14-59	0.682 Ac.
15	5459	EDWARD F. & SHIRLEY R. LITTLE 2-25-88	11-30-82	1.390 Ac.
16	5410	Western Sizzlin Steak House Of Baton Rouge, Inc.	9-8-65	0.166 Ac.

0
102
B



N
129
A

0-102-A
1482