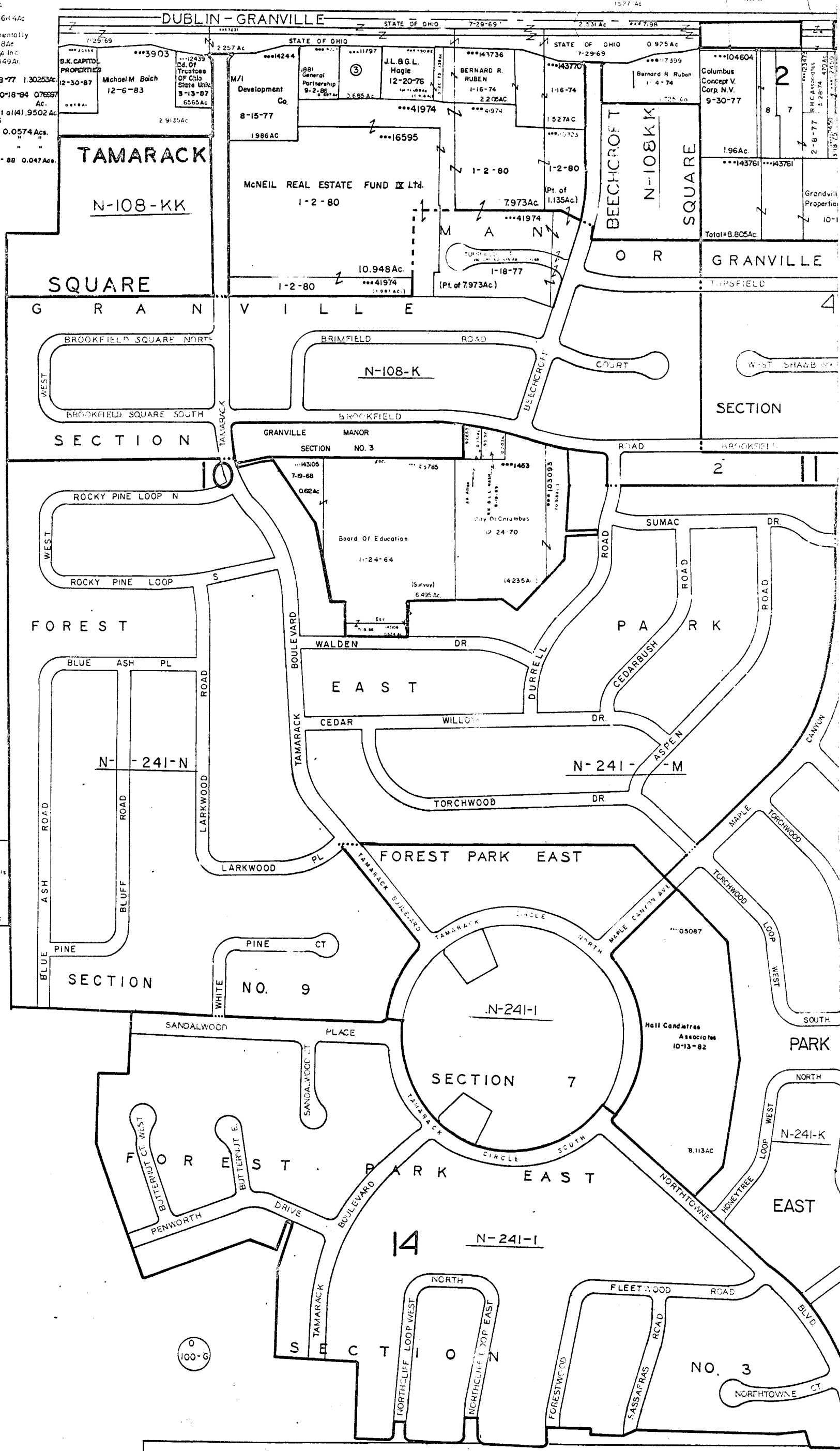


\*\*\*143748 PERRY-CANYON LTD. 8-1-79 1.060 Ac.  
 \*\*\*10554 Ludo & G. Bevilacqua 4-27-77 .392 Ac.  
 \*\*\*11797 Central Ohio Area Council Boy Scouts of America 6-30-78 .685 Ac.  
 \*\*\*Columbus Farms, Inc. 12-1-86 1.614 Ac.  
 \*\*\*190518 Association for the Developmentally Disabled 1-27-81 0.568 Ac.  
 \*\*\*19370 Columbus Children's College Inc 1-27-81 (0.063 Ac) 0.949 Ac.  
 \*\*\*194578 Wendy International Inc 2-8-77 1.30253 Ac.  
 \*\*\*199875 Fibrun & Sons Investments 10-18-84 0.76937 Ac.  
 \*\*\*143747 Dawn W Barkley et al (4) 9.502 Ac 12-24-86  
 CITY OF COLS. (HWY) 8-28-87 0.0574 Ac.  
 \*\*\*143782 STANDARD OIL CO. 5-13-88 0.047 Ac.

0 100-B



0 100-D

N 241-F

0 100-G

