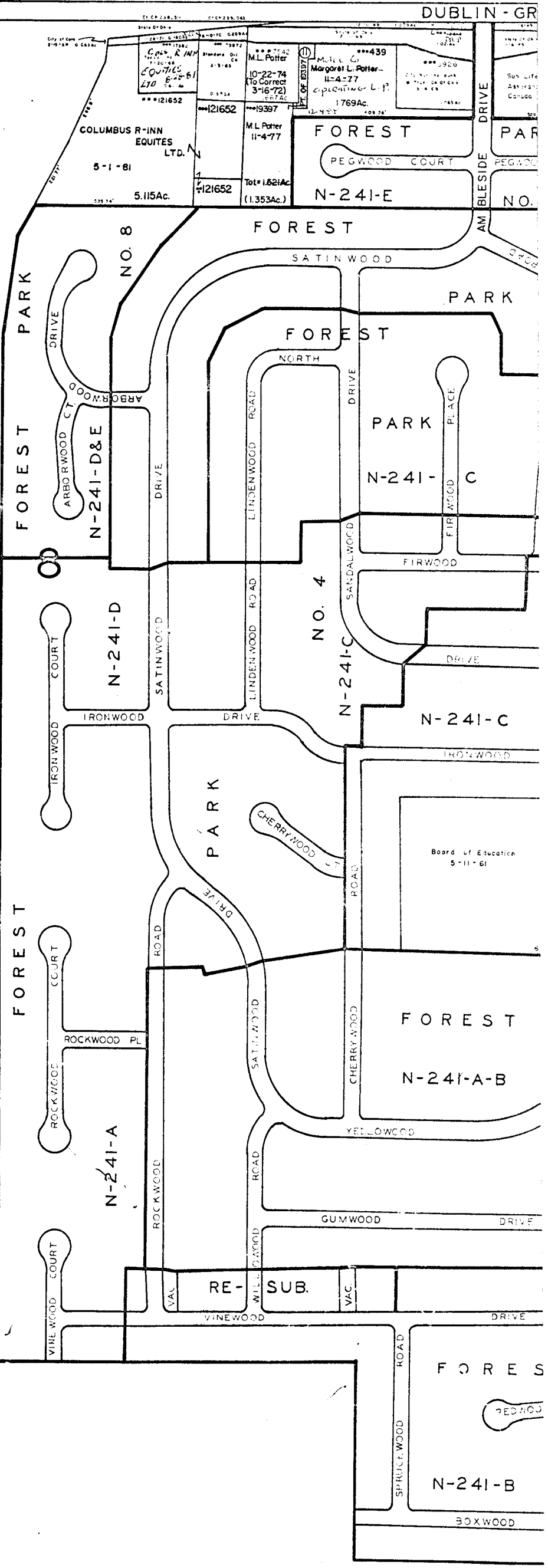
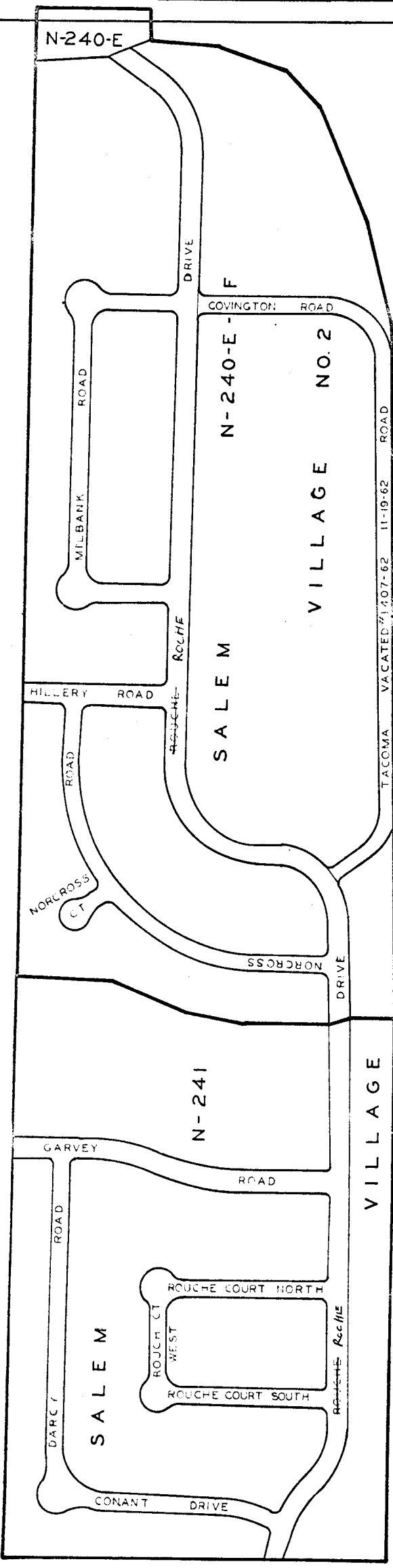


0
100
A

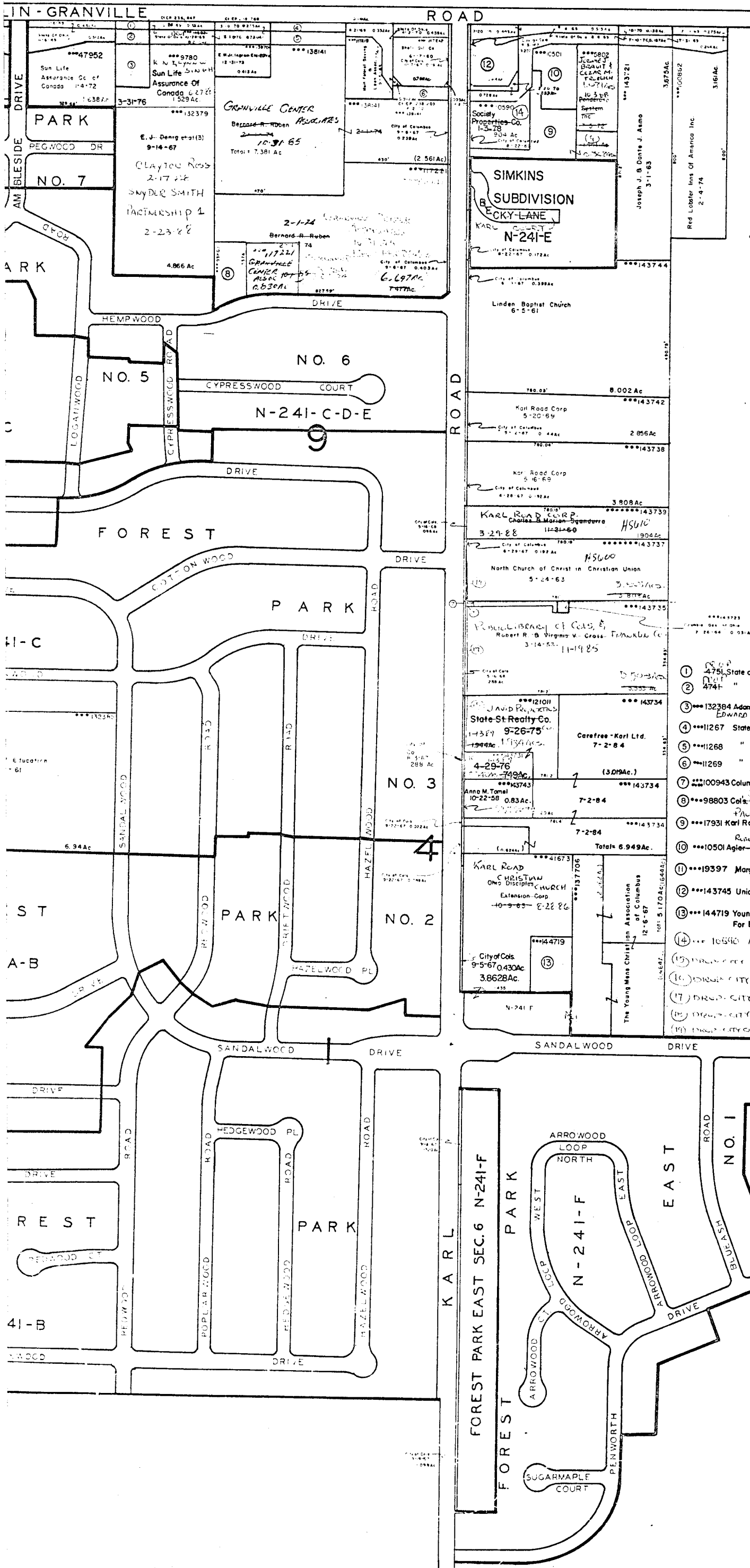
DUBLIN - GR

N-240-E

N
240
E
E
E
E



0
100
F



O-100-D

SHARON R. 18 TWP TWP 2

E-HIGHWAY EASEMENT
 SCALE 1" = 200'
 TAXING DISTRICTS DISTRICT CODE
 ***CITY OF COL'S. CIO
 *****SHARON-COL'S. S.D. 254
 H--- HOUSE NUMBERS

0
100
E

- ① 4751 State of Ohio (Hi-way) (Cl. Cp. 237876) 8-9-71 0.175Ac.
- ② 4741 " " " " " " 0.146Ac.
- ③ 132384 Adam R. B. Edward D. Cortagna 6-4-64 0.449Ac.
Edward D. Cortagna CREWELL 9-14-75
- ④ 11267 State of Ohio (Hi-way) (Cl. Cp. 238101) 10-17-72 .188Ac.
- ⑤ 11268 " " " " " " .314Ac.
- ⑥ 11269 " " " " " " .207Ac.
- ⑦ 100943 Columbia Gas of Ohio 1-19-73 .428Ac. 0.127Ac.
- ⑧ 98803 Col's Childrens College Inc. 4-7-75 .587Ac.
- ⑨ 17931 Karl Road Fitness Connection 12-28-84 (.965Ac.) 1.052Ac.
RANT AGLER TR 7-23-88 Total 1.327Ac.
- ⑩ 10501 Agler-Davidson Sporting Goods Inc. 6-4-76 .813Ac.
- ⑪ 19397 Margaret L. Potter 11-4-77 (.168Ac.) PT. OF 1.521Ac.
- ⑫ 143745 Union Oil Co. of California 11-17-77 .666Ac.
- ⑬ 144719 Young Men's Christian Assoc. 3-23-78 (.7002Ac.)
For Bal. 144719 See N-241-F
- ⑭ 10690 Ancestrist Company National Association 12-28-78
- ⑮ 100943 Columbia Gas of Ohio (Hi-way) 7-23-88 0.127Ac.
- ⑯ 100943 Columbia Gas of Ohio (Hi-way) 7-23-88 0.127Ac.
- ⑰ 100943 Columbia Gas of Ohio (Hi-way) 7-23-88 0.127Ac.
- ⑱ 100943 Columbia Gas of Ohio (Hi-way) 7-23-88 0.127Ac.

0
100
G