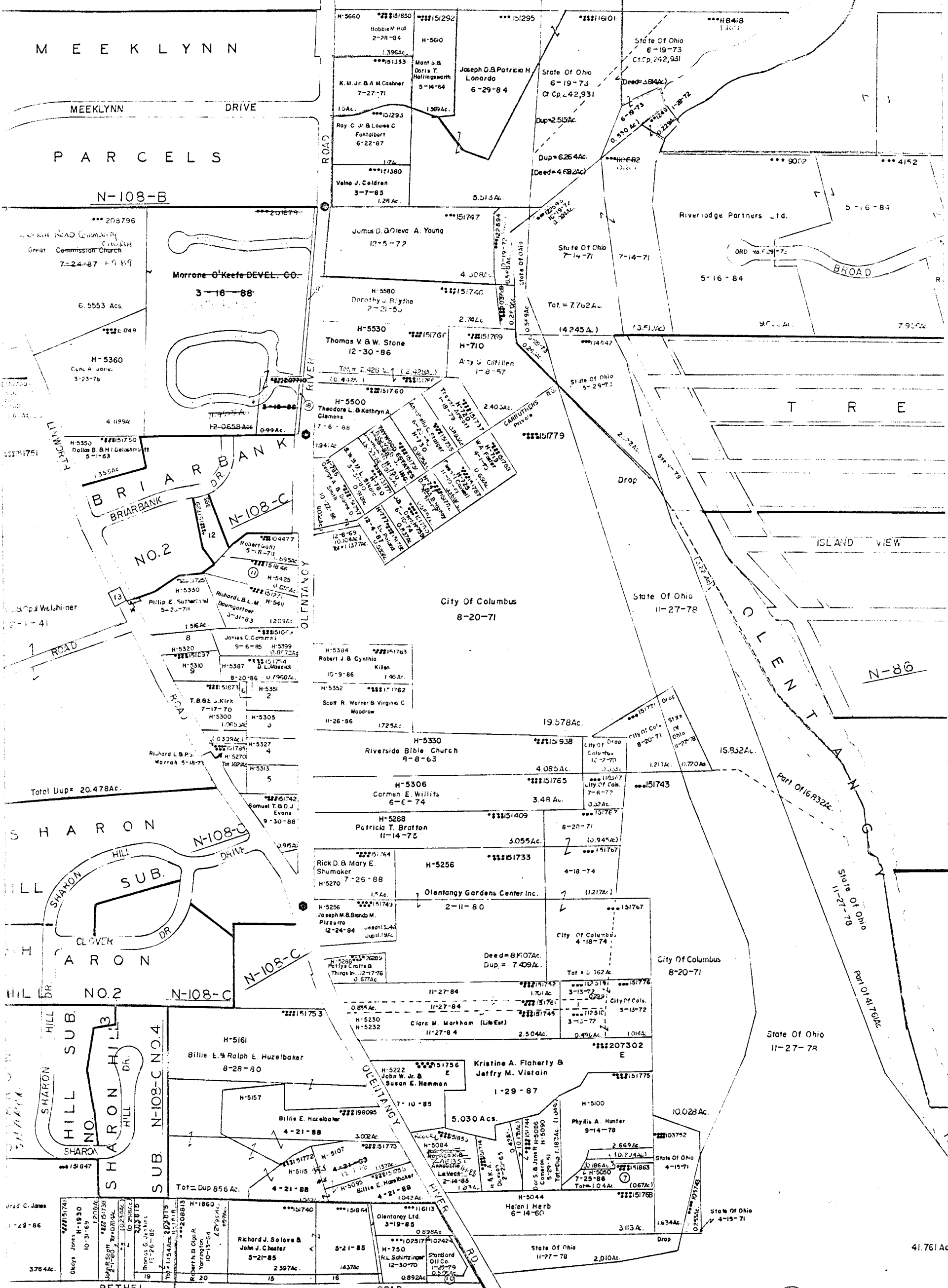


0
99
C

- 1-112536 City Of Columbus C&CP 240626 3-13-72 0.16Ac.
- 2-151970 Fred E. Wagner 10-12-73 0.47Ac.
- 3-151732 David W. & Linda D. Doeder 5-20-77 0.494Ac.
- 4-151871 M.R. Hassey & B. Framley 3-25-63 0.494Ac.
- 5-151843 Thomas J. Bigler 6-25-84 0.000Ac.
- 6-151943 Columbia Gas Of Ohio 0.62Ac. H-5351
- 7-151888 M.L. Underwood 7-25-86 1.04Ac.
- 8-151701 Robert M. Roll 9-30-85 0.407Ac.
- 9-151097 James I. & Nora D. Johnson 3-23-87 0.547Ac.
- 10-Drop City Of Columbus (Hi-Way) 6-28-82 0.25Ac.
- 11-151846 George & Nikki - A. Morika 1-31-83 0.836Ac.
- 12-151729 Mark A. Galli 2-12-85 0.393Ac.
- 13-Drop Franklin County Commissioners 9-27-84 0.052Ac.
- 14- " " " " 10-25-84 0.021Ac.
- 15-Drop C
- 16- "
- 17-DROP CITY
- 18- "
- 19- "
- 20- "



1443

0
13
A

15- Drop City Of Columbus 10-31-84 0.508 Ac.
 16- " " " " " " 0.344 Ac.
 17- DROP CITY OF COLS(HIGHWAY) 8-1-88 0.570 Ac.
 18- " " " " " " 0.209 " "
 19- " " " " " " 0.2402 Ac.
 20- " " " " " " 0.2755 "

N
72
C

TAXING DISTRICT DISTRICT CODE
 SHARON TWP 250
 *COL-WORTH S.D. 610
 *CITY OF WORTH 100
 *CITY OF COLS 010
 *SHARON-COLS. S.D. 254

0-99-E
 SHARON
 R.18
 TWP.2

FRANKLIN COUNTY SURVEY MONUMENTS
 H---HOUSE NUMBERS

SCALE 1"=200'
 E=HIGHWAY EASEMENT

