

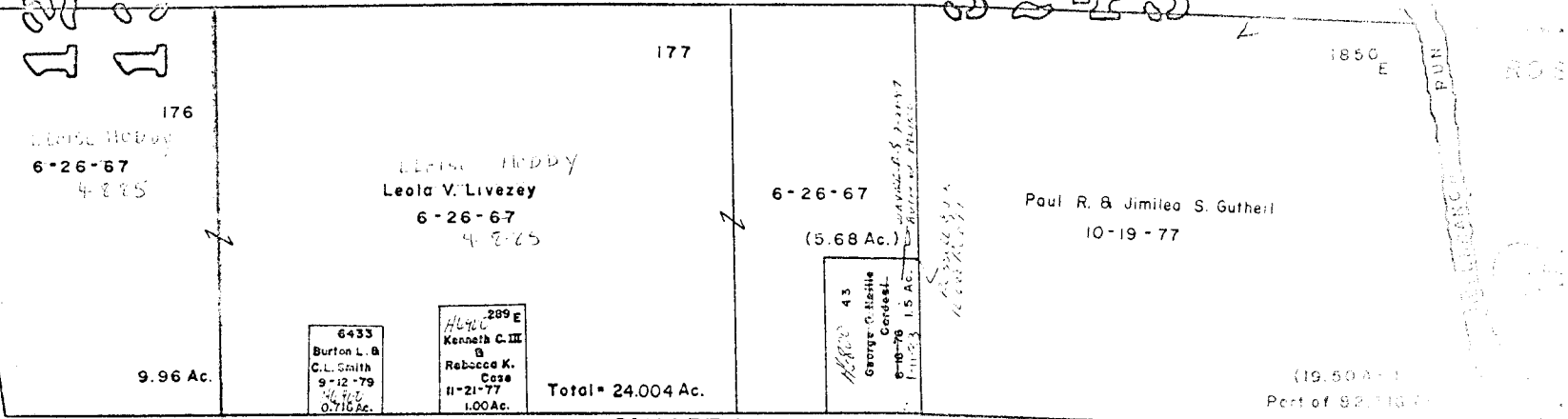
0
95
A

- ① 1016 Oscar B. Everett Hansley 5-21-94 278 Ac
- ② 1682 E.A. & F.B. Hansley 5-21-94 557 Ac
- ③ 111 H.C. & L.L. Hyland 5-17-43 46 Ac. M.O. & D.A. WILKINSON 9-18-80 1137
- ④ 181 Bryan J. Roseanne Family 8-23-83 552 Ac

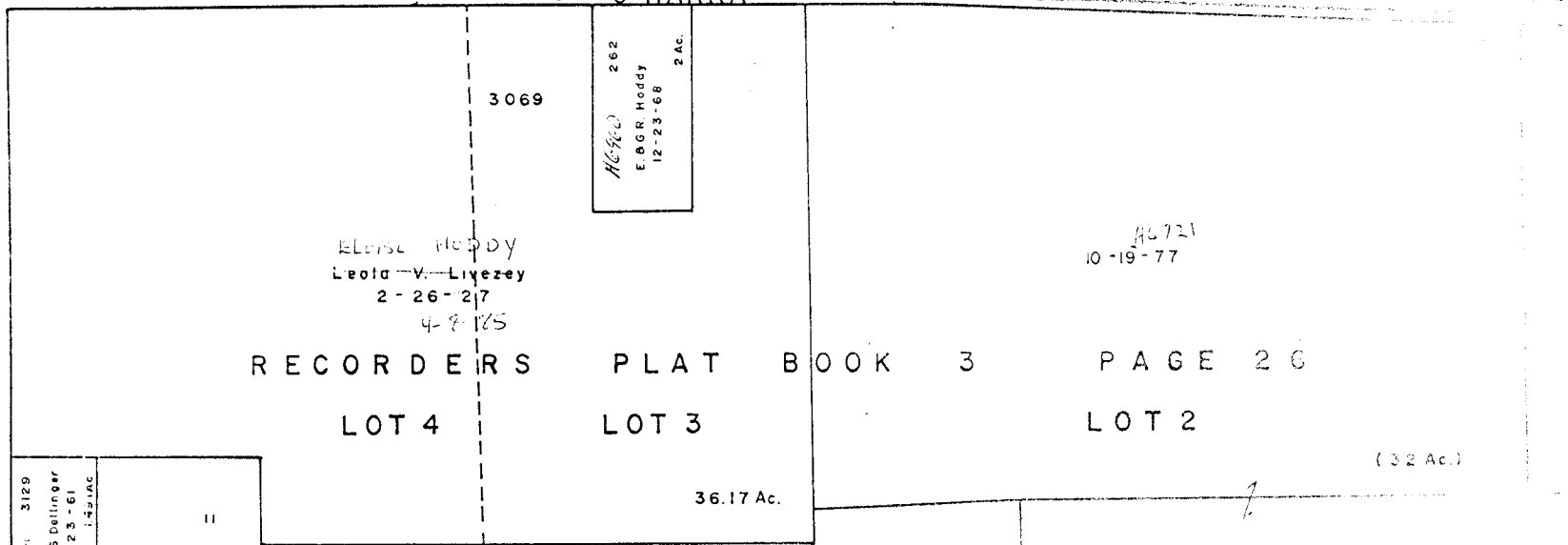
ALTON

128337
133215

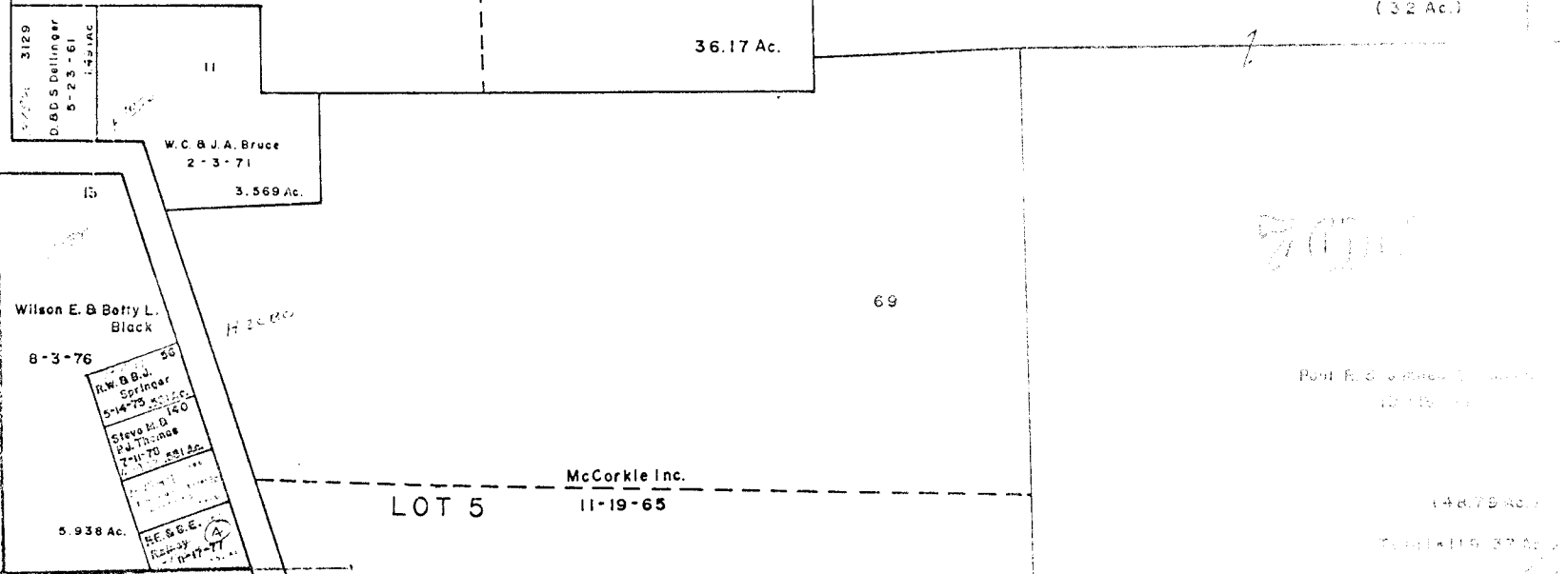
3213



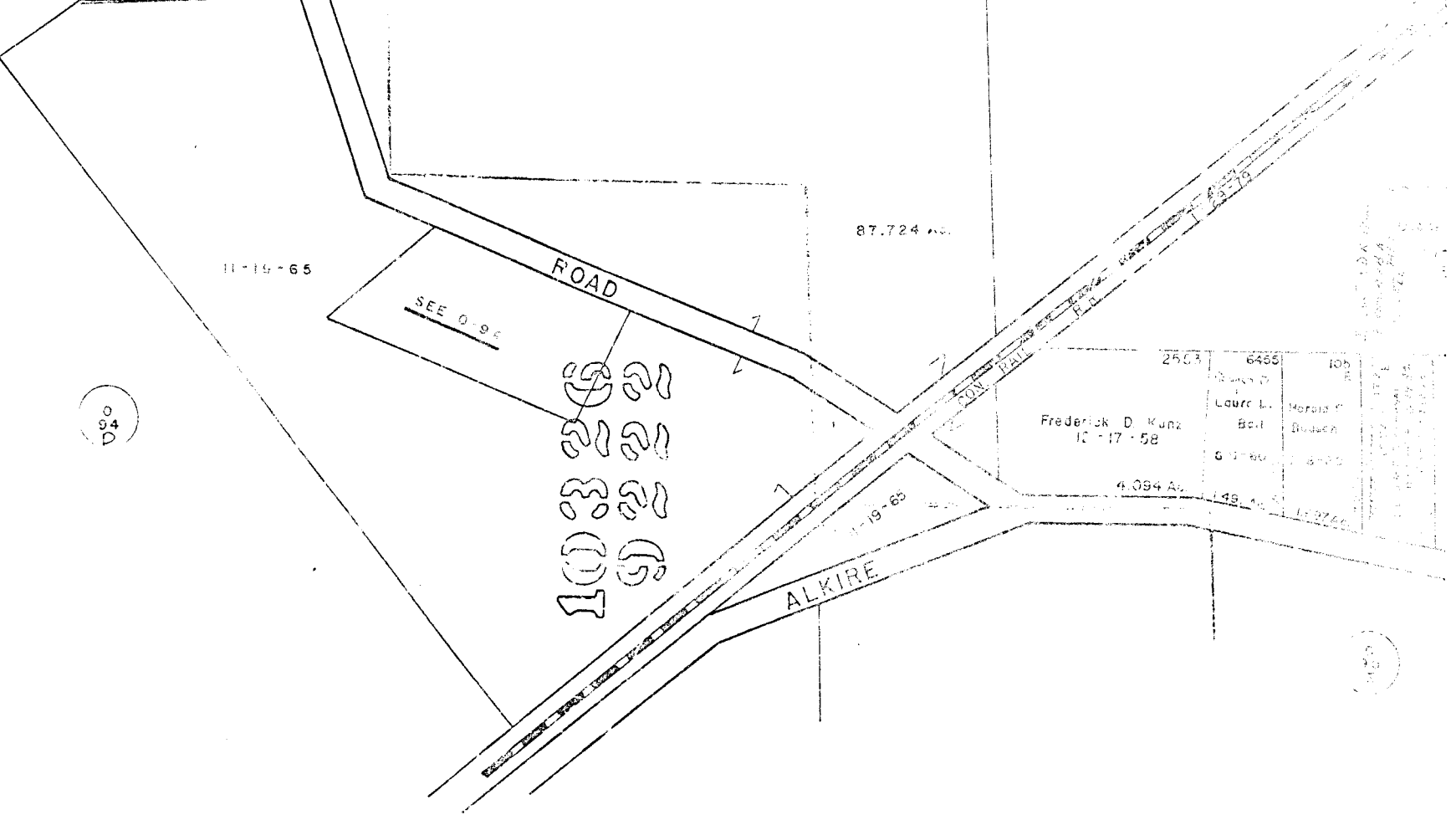
O'HARRA



RECORDERS PLAT BOOK 3 PAGE 26
LOT 4 LOT 3 LOT 2



LOT 5 11-19-65



109
103
102
101

ALKIRE

0
94
D

0
94
D

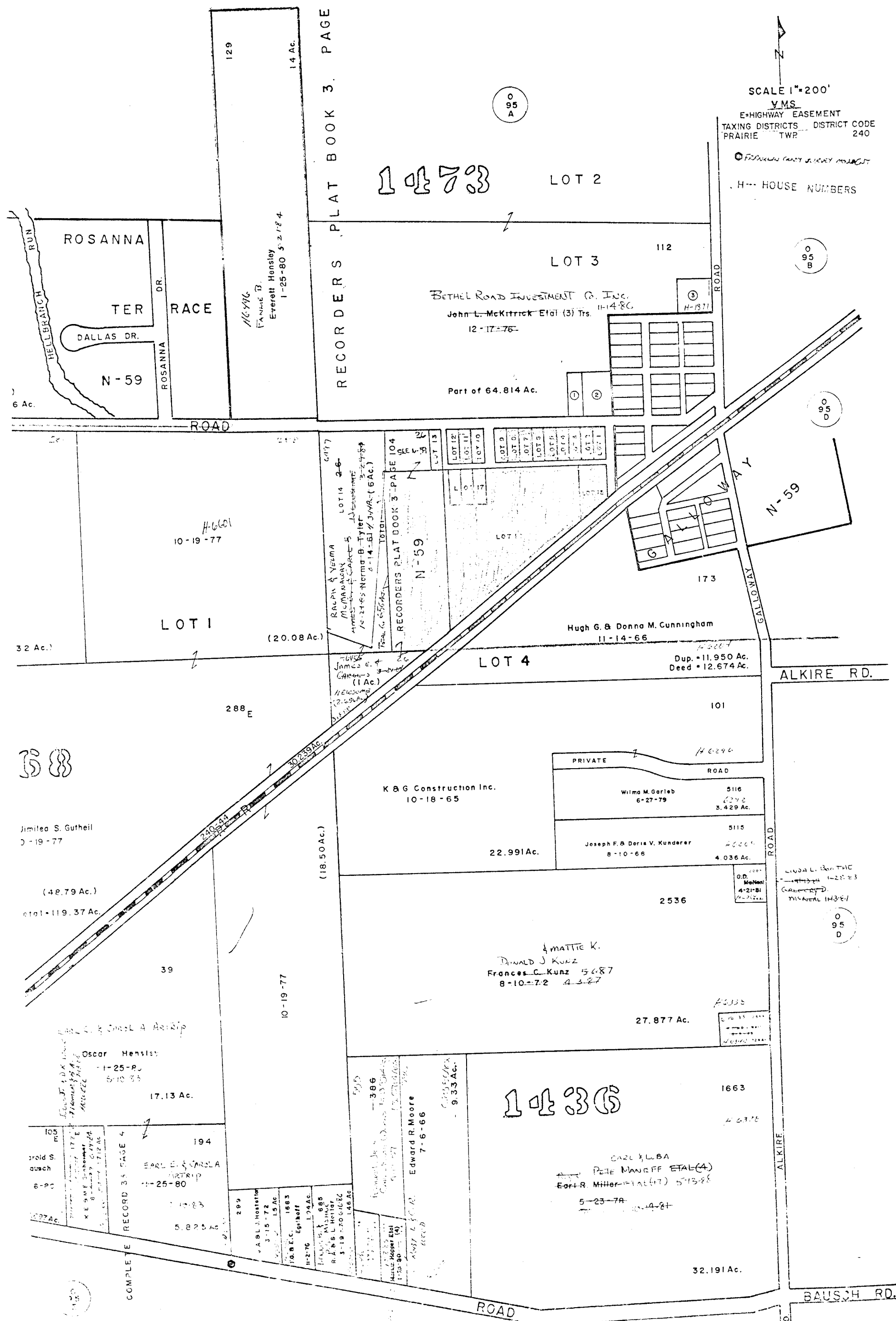
0
94
D

SCALE 1"=200'

V.M.S.
E-HIGHWAY EASEMENT
TAXING DISTRICTS DISTRICT CODE
PRAIRIE TWP 240

FRANKLIN COUNTY SHERIFF'S OFFICE
HOUSE NUMBERS

RECORDERS PLAT BOOK 3. PAGE 430



1473

0
95
A

0
95
B

0
95
D

0
95
D

1436

Jimie S. Guthrie
10-19-77
(42.79 Ac.)
Total = 119.37 Ac.

Oscar Hensley
1-25-80
5-10-85
17.13 Ac.

105 F
194
1-25-80
5.825 Ac.

299
J.A. L. Hostetter
3-15-72
1.5 Ac.

386
Edward R. Moore
7-6-66
9.33 Ac.

1663
CARL & LUBA
PELLE MANOFF ETAL (4)
East R. Miller ETAL (7) 5-13-88
5-23-78
1-14-84

32.191 Ac.

BAUSCH RD.