

0  
89  
E

COLE ROAD

ST. RT. 40

NATIONAL ROAD 6535

25  
Wm. H. Coulthard et al (3)  
10-7-26  
4.936 Ac  
(See D.B. 832 P. 575)

1792

3109

H-6621  
Stephen E. Kennedy et al (3)  
6-15-83

5

6-15-83

H-105  
Carlo A. & Frances  
Shearer 9-13

Ronald W. & Angeline D. Gessert  
9-8-81

H-135  
Ronald H. & Gilberta V. Lutz  
7-19-66

H-161  
W T & P I Inglis  
7-9-74

H-175  
C. Steven & Susan A. Runyi  
1-20-87

H-181  
Clarence H. & L. J. Parsons  
9-10-65

H-191  
A. Jr. & D. A. Borders  
1-25-60

7972

John W. Galbreath  
12-29-87

H-6959  
Wm. H. Coulthard Et Al (Tr.)  
3-13-26

SURVEY PL. BK. 3 - P. III

57  
02

Alfred & Ruth Broffar  
1-8-76

15.111 Ac

H-425  
Frederick W. & K. L. Kautz  
5-3-88

H-465  
K. L. & E. G. Schade  
10-20-54

Tot. 3

H-495  
D. C. & L. W. Newton  
9-8-53

112.794 Ac

117.73 Ac

0  
91  
C

0  
91  
C

0  
92  
D

0  
92  
D

O-92-A  
PRAIRIE TWP.

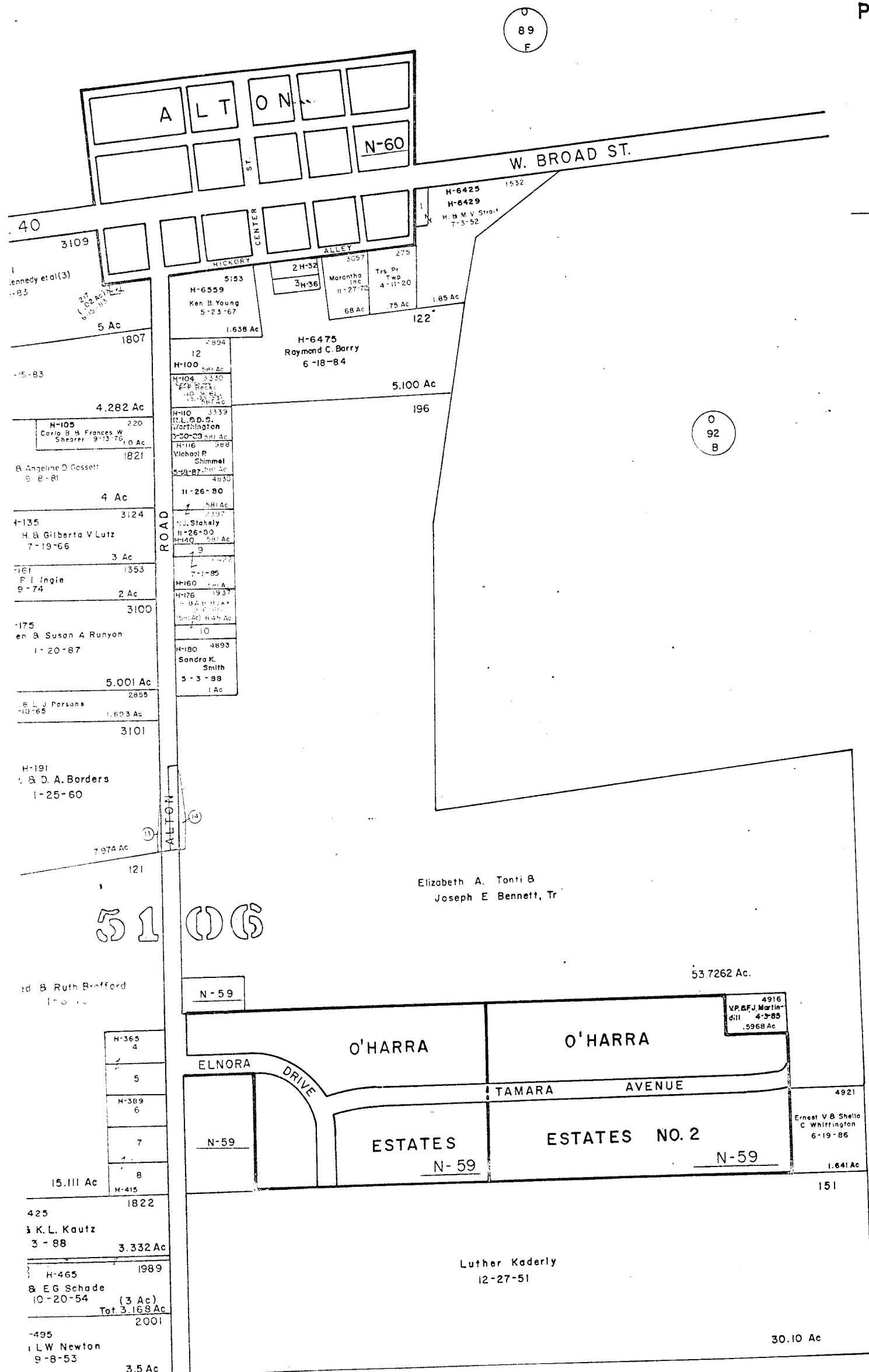


SCALE 1"=200'

V.M.S.

E-HIGHWAY EASEMENT  
TAXING DISTRICTS DISTRICT CODE  
PRAIRIE TWP 240

H---HOUSE NUMBERS



3109	5 Ac	1807	4.282 Ac	1821	4 Ac	3124	3 Ac	1353	2 Ac	3100	5.001 Ac	1603 Ac	3101	7.974 Ac	121	15.111 Ac	1822	3.332 Ac	1989	2001	3.5 Ac
<p>Ken B. Young 5-23-67 Raymond C. Barry 6-18-84 Elizabeth A. Tonti &amp; Joseph E. Bennett, Tr O'HARRA ESTATES NO. 2 Luther Kaderly 12-27-51 K. L. Kautz 3-88 L. W. Newton 9-8-53</p>																					

1	2265 H & M V Strait	1-28-58	.15 Ac
2	3076 Steven J. Wyatt	12-9-85	50 X 150
3	975 Raymond C. Barry	5-2-88	50 X 150
4	4851 Christopher L. & Mary C. Floetz	8-12-87	.528 Ac.
5	5195 Clarence R. & Betty L. Morris	10-20-87	.528 Ac
6	4844 G G & M T Wegman	5-26-62	.528 Ac
7	4854 M M & M J Reeves	7-9-62	.607 Ac
8	1293 M M & M J Reeves	7-9-62	.607 Ac
9	2396 William B & Lynda M Ote	7-1-85	.232 Ac
10	1937 R B & S Hawk	9-6-60	(.264 Ac)
12	4894 M.W. & P.M. Hall	4-26-79	.581 Ac
13	DROP Franklin County Com. (Hi-way)	8-2-83	0.124 Ac.
14	DROP " " ( " )	8-2-83	0.218 Ac.

5106

O  
92  
D

O  
92  
B

O  
92  
B

O-92-A