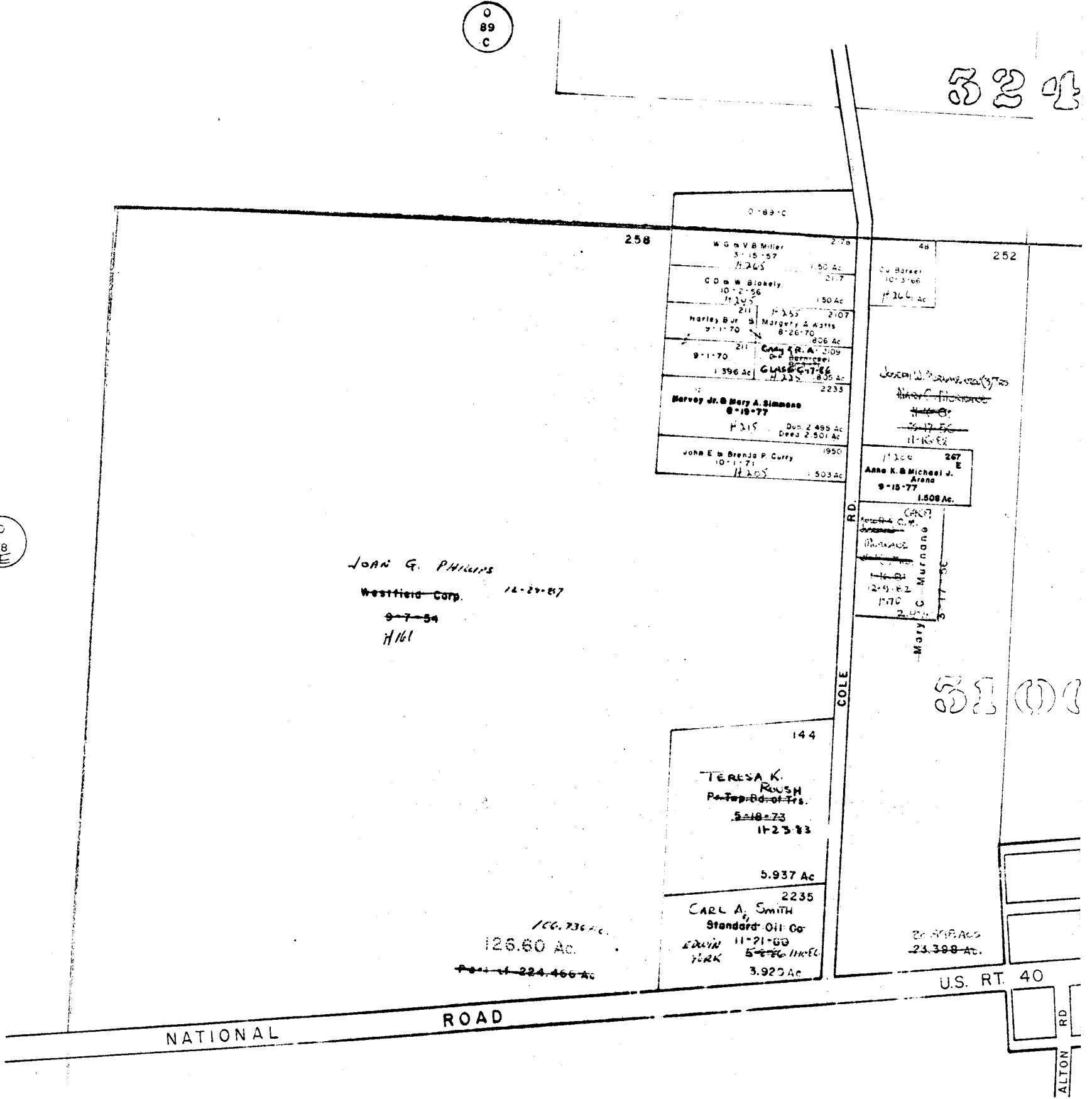


O
89
C

324

C
88
E



JOHN G. PHILLIPS
 Westfield Corp. 12-27-57
 9-7-54
 H161

W.G. & V.B. Miller
 3-15-57
 H265 1.50 Ac

C.D. & W. Blossely
 10-2-56
 H245 1.50 Ac

Harley B. Jr. & Margery A. Kattis
 9-1-70
 H255 2.07 Ac

Carl R. A.
 9-1-70
 H255 2.07 Ac

Harvey Jr. & Mary A. Simmons
 8-19-77
 H315 2.495 Ac
 Deed 2.501 Ac

John E. & Brenda P. Curry
 10-1-77
 H205 1.503 Ac

John G. Phillips
 12-27-57
 9-7-54
 H161 23.398 Ac

144

TERESA K. ROUSH
 Pa-Top-Ed-of-Trs.
 5-18-73
 H2383
 5.937 Ac

2235

CARL A. SMITH
 Standard Oil Co.
 EDWIN 11-21-50
 YLRK 5-26-56 H235
 3.925 Ac

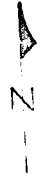
NATIONAL ROAD

U.S. RT. 40

ALTON RD.

J
92
A

O-89-E
PRAIRE TWP



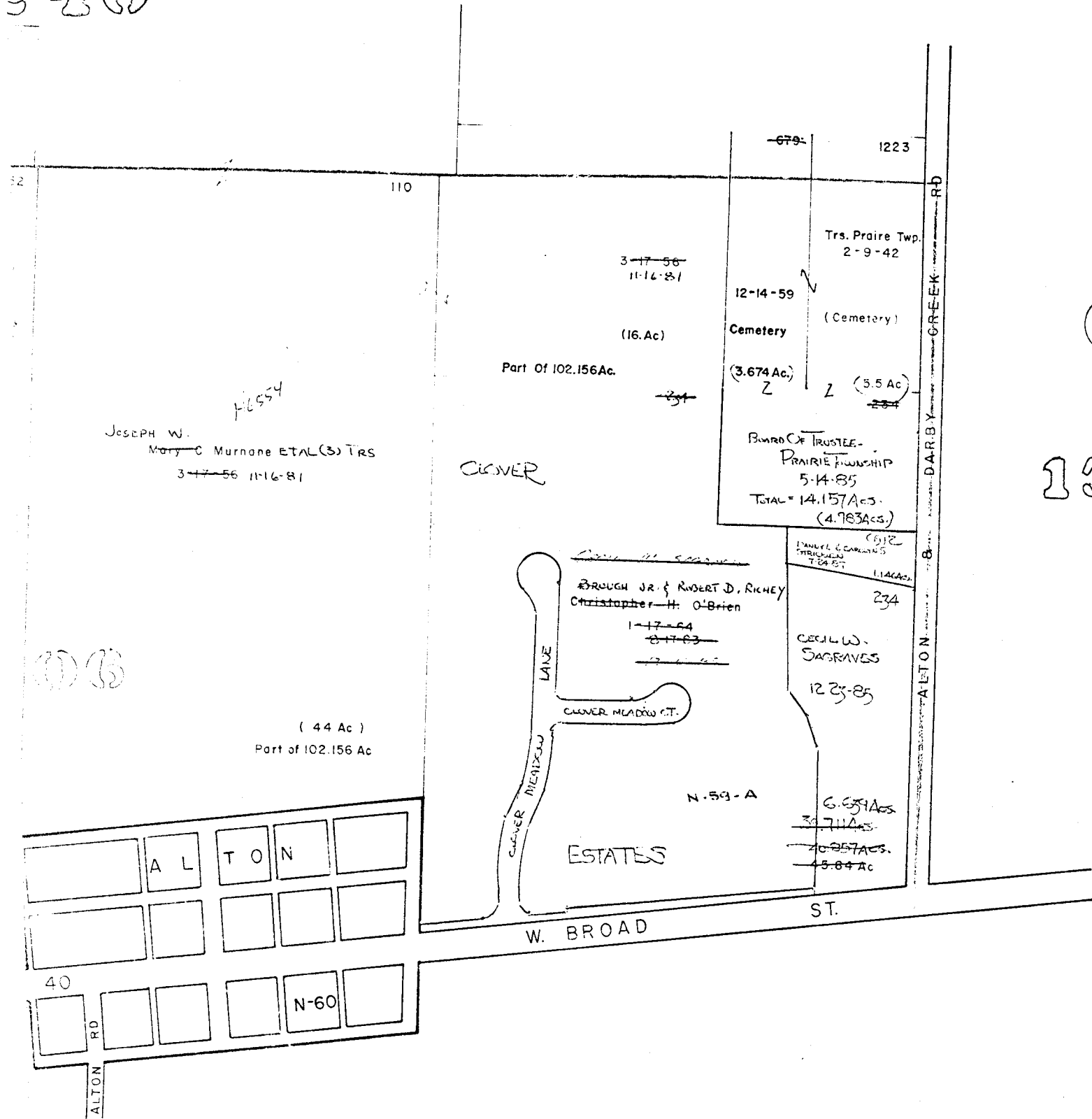
SCALE 1"=200'

V. M. S.
E= HIGHWAY EASEMENT
TAXING DISTRICTS DISTRICT CODE
PRAIRE TWP. 240
H--- HOUSE NUMBERS

0
89
C

0
89
F

1371



3 4 5 6 7 8 9 10 11 12 13 14 15 16 17 18 19 20 21 22 23 24 25 26 27 28 29 30 31 32 33 34 35 36 37 38 39 40

1 2 3 4 5 6 7 8 9 10 11 12 13 14 15 16 17 18 19 20 21 22 23 24 25 26 27 28 29 30 31 32 33 34 35 36 37 38 39 40

0
92
A

O-89-E

RECORDED IN
PLAT BOOK
4/27/81