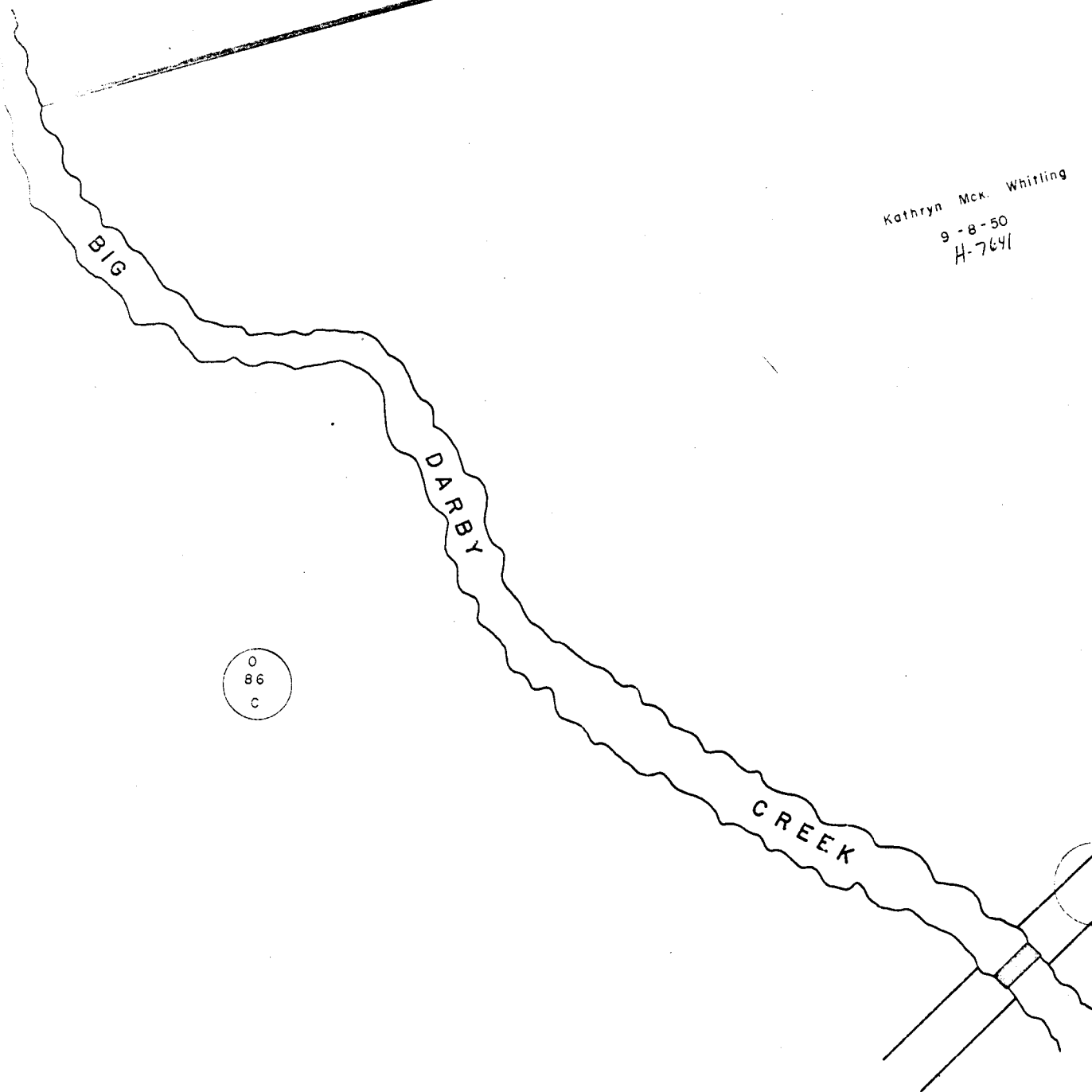


947

0  
85  
G

Kathryn Mck. Whitting  
9-8-50  
H-7641


(162.380 Ac)  
Part of 307.007 Ac

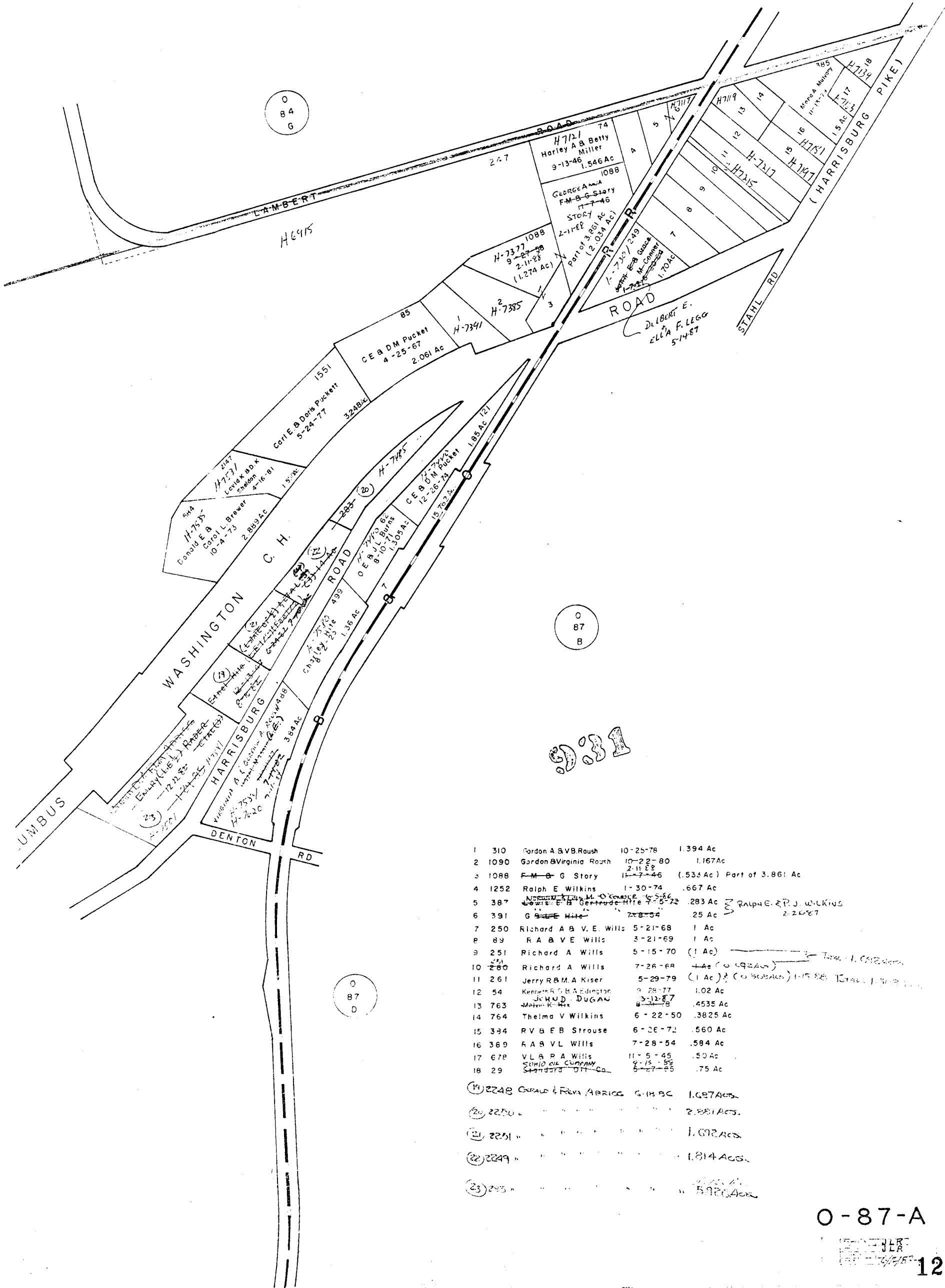


0  
86  
C

0  
86  
C

# O-87-A PLEASANT TWP

  
 SCALE 1" = 200'  
 V.M.S.  
 E = HIGHWAY EASEMENT  
 TAXING DISTRICTS DISTRICT CODE  
 PLEASANT TWP 230  
 H... HOUSE NUMBERS



1	310	Gordon A & V.B. Roush	10-25-78	1.394 Ac
2	1090	Gordon & Virginia Roush	10-22-80	1.167 Ac
3	1088	F.M. & G. Story	2-11-46	(.533 Ac) Part of 3.861 Ac
4	1252	Ralph E. Wilkins	1-30-74	.667 Ac
5	387	Wm. E. & Gertrude Hite	7-5-72	.283 Ac
6	391	G. & M. Hite	7-8-74	.25 Ac
7	250	Richard A & V.E. Wills	5-21-68	1 Ac
8	89	R.A. & V.E. Wills	3-21-69	1 Ac
9	251	Richard A. Wills	5-15-70	(1 Ac)
10	280	Richard A. Wills	7-26-68	1 Ac (0.922 Ac)
11	261	Jerry R.B.M.A. Kiser	5-29-79	(1 Ac) (0.922 Ac)
12	54	Kenneth S.B.A. Edington	9-28-77	1.02 Ac
13	763	JAMES DUGAN	3-12-87	.4535 Ac
14	764	Thelma V. Wilkins	6-22-50	.3825 Ac
15	394	R.V. & E.B. Strouse	6-26-72	.560 Ac
16	389	R.A. & V.L. Wills	7-28-54	.584 Ac
17	678	V.L. & P.A. Wills	11-5-45	.50 Ac
18	29	SUNCOIL COMPANY	5-27-85	.75 Ac
(19)	2248	Carroll & Fern Abrice	5-18-80	1.027 Ac
(20)	2250	"	"	2.881 Ac
(21)	2251	"	"	1.092 Ac
(22)	2249	"	"	1.814 Ac
(23)	225	"	"	5.920 Ac