

O-81-G
PLEASANT TWP.

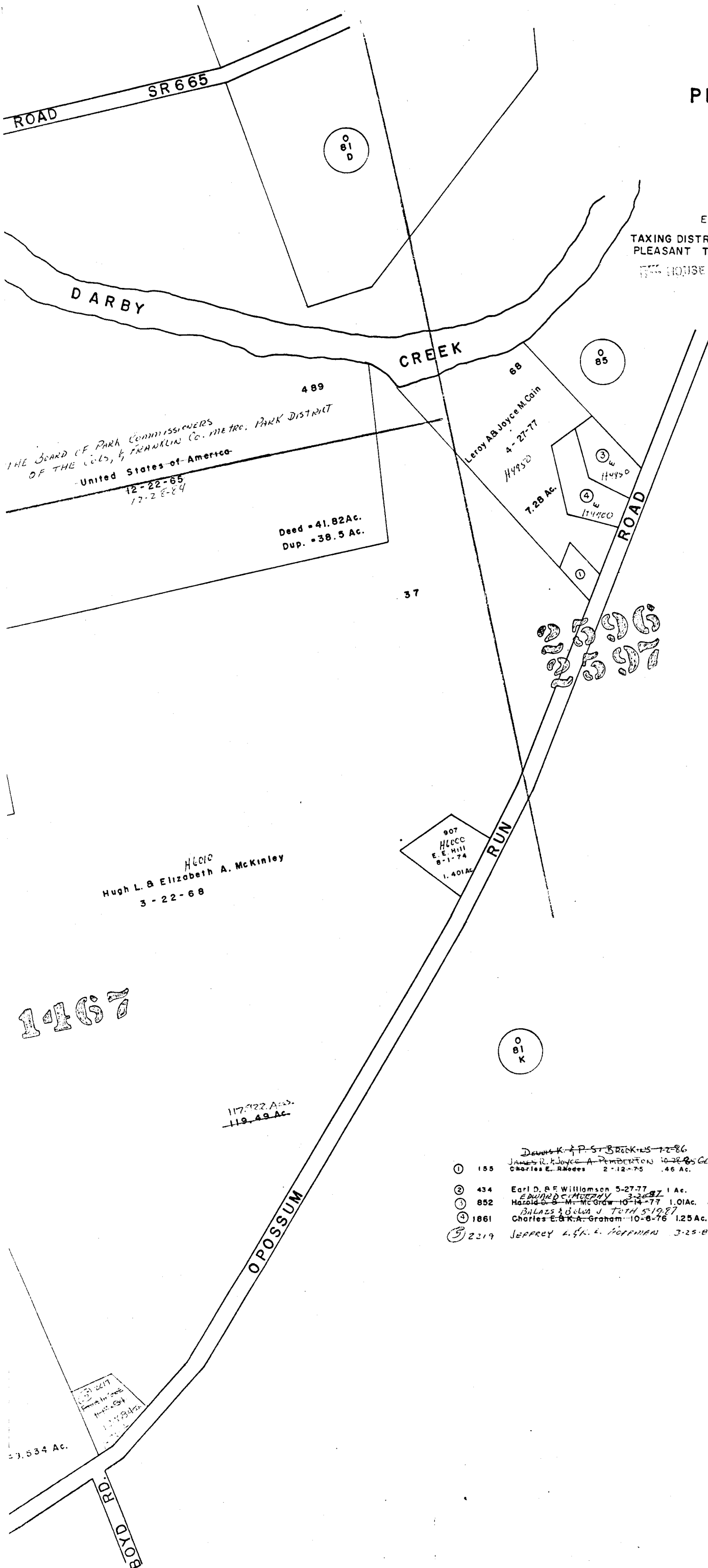


SCALE 1"=200'
V.M.S.
E=HIGHWAY EASEMENT

TAXING DISTRICT
PLEASANT TWP

DISTRICT CODE
230

HOUSE NUMBERS



- ① 155 ~~James R. Joyce & P. St. Breckins 1-2-86~~
James R. Joyce & P. St. Breckins 10-22-85 GERARD SEMIGEL
Charles E. Rhodes 2-12-75 .46 Ac. 3-22-88
- ② 434 Earl D. & F. Williamson 5-27-77 1 Ac.
- ③ 852 EDWARD C. MURPHY 3-26-87
Harold B. M. McGraw 10-14-77 1.01 Ac. EDWARD C. & D. K. MURPHY 2-2-89
- ④ 1861 Bilazs & Selva J. Toth 5-19-87
Charles E. & K. A. Graham 10-8-76 1.25 Ac.
- ⑤ 2219 JEFFREY L. K. HOFFMAN 3-25-85 1.2268 Ac.