

GEORGESVILLE & WRIGHTSVILLE RD.

338  
HH Golf Club Inc.  
2-8-78 75 Ac.  
2-8-78 108  
2-8-78 1 Ac.

1305

Barbara J. Daniels  
2-3-75

222  
3185  
BOARD OF PARK  
COMMISSIONERS OF THE  
COUNTY OF FRANKLIN COUNTY  
METHODIST EPISCOPAL DISTRICT  
2-15-85

0  
79  
B

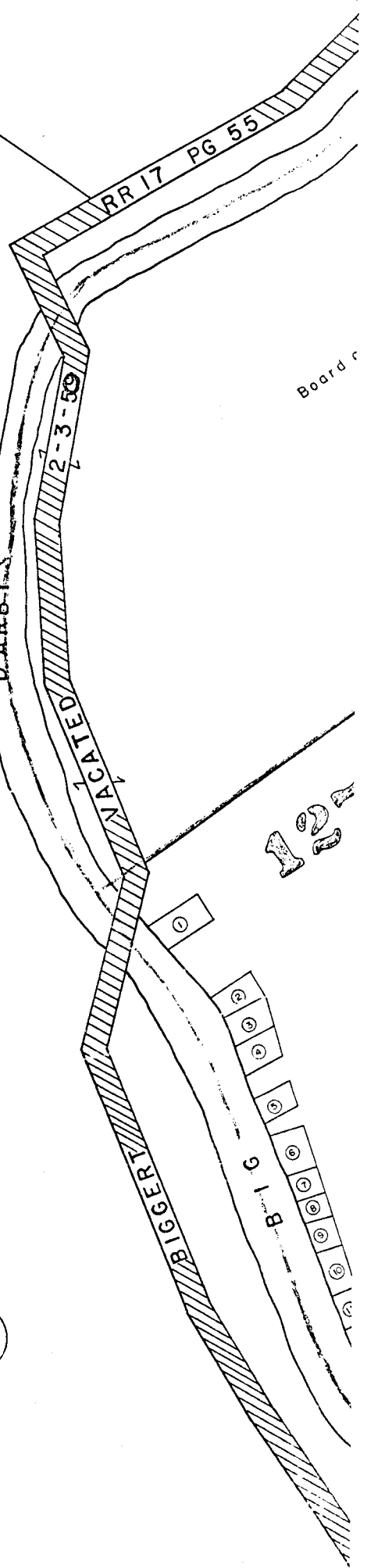
8614

0  
79  
B

501

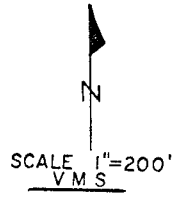
89.05 Ac.  
65.024 Ac.  
24.081 Ac.

0  
79  
B

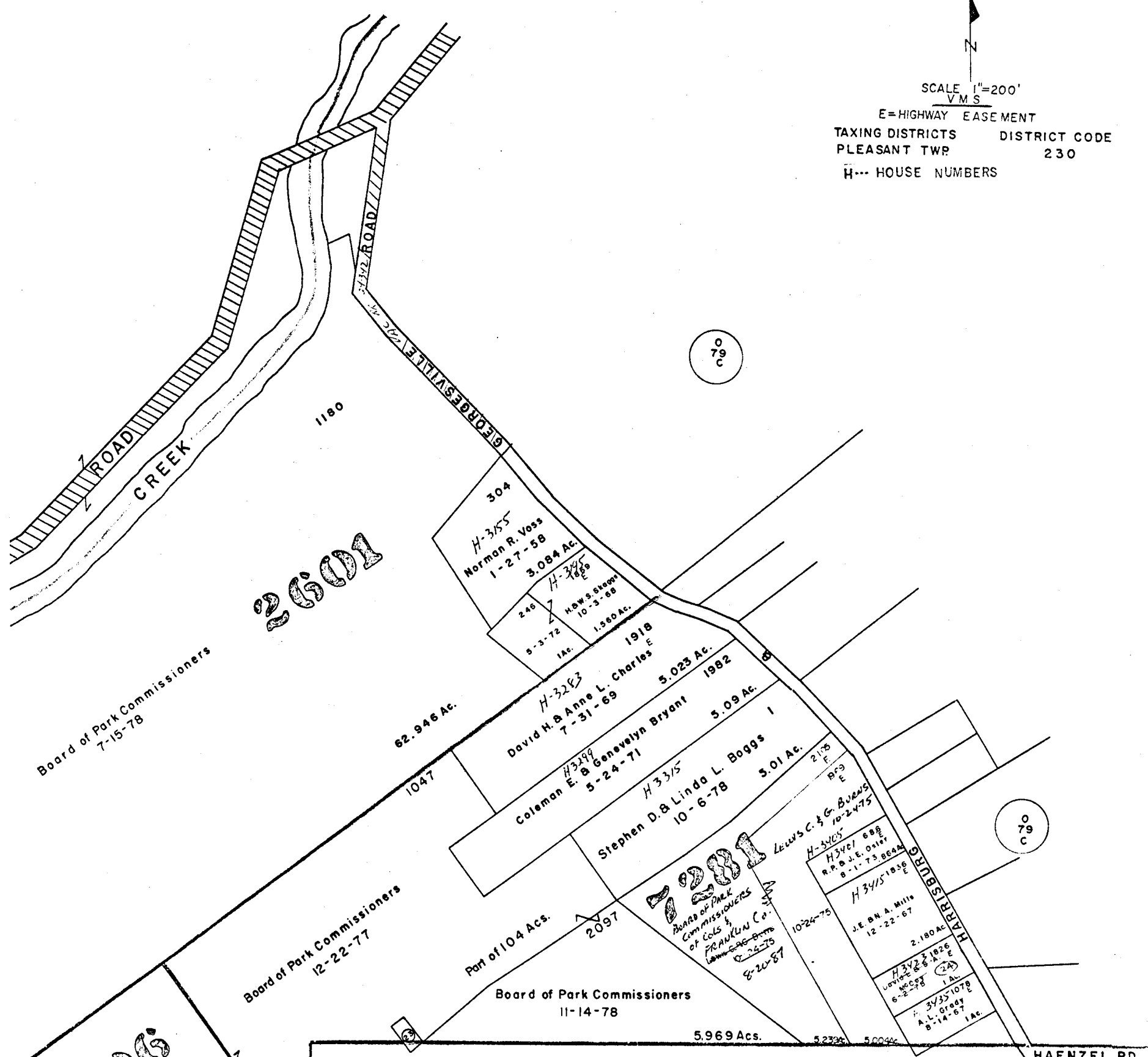


121

O-79-E  
PLEASANT TWP.



E=HIGHWAY EASEMENT  
TAXING DISTRICTS DISTRICT CODE  
PLEASANT TWP 230  
H--- HOUSE NUMBERS



12796

Board of Park Commissioners  
12-22-77

Board of Park Commissioners  
11-14-78

HAENZEL RD.

1172

O  
79  
F

- THE BOARD OF PARK COMMISSIONERS OF THE COLS. & FRANKLIN CO. METRO. PARK DISTRICT
- ① 1625 U.S.A. 8-25-67 .248 Ac. 12-22-64
  - ② 656 U.S.A. 8-19-67 .193 Ac. "
  - ③ 637 U.S.A. 8-19-67 .202 Ac. "
  - ④ 1619 U.S.A. 8-24-67 .17 Ac. "
  - ⑤ 1548 U.S.A. 8-17-67 .15 Ac. "
  - ⑥ 1611 U.S.A. 8-27-67 .221 Ac. "
  - ⑦ 1616 U.S.A. 8-23-67 .076 Ac. "
  - ⑧ 1610 U.S.A. 8-16-67 .092 Ac. "
  - ⑨ 1887 U.S.A. 8-30-67 .121 Ac. "
  - ⑩ 1554 Board of Park Comm. Off. Franklin County 12-30-81 0.197 Ac.
  - ⑪ 189 THE BOARD OF PARK COMMISSIONERS OF THE COLS. & FRANKLIN CO. METRO. PARK DISTRICT U.S.A. 8-28-67 .185 Ac. 12-22-64
  - ⑫ 1614 U.S.A. 8-24-67 .080 Ac.
  - ⑬ 640 Board of Park Commissioners 10-25-78 .92 Ac.
  - ⑭ 1612 THE BOARD OF PARK COMMISSIONERS OF THE COLS. & FRANKLIN CO. METRO. PARK DISTRICT 12-22-64 U.S.A. 8-12-67 .167 Ac.
  - ⑮ 1613 U.S.A. 8-27-67 .137 Ac.

- ⑯ 1622 U.S.A. 8-10-67 .12 Ac. 12-22-64
- ⑰ 1615 U.S.A. 8-25-67 .104 Ac. "
- ⑱ 1618 U.S.A. 8-18-67 .23 Ac. "
- ⑲ 680 U.S.A. 8-20-67 .494 Ac. "
- ⑳ 659 U.S.A. 9-25-67 .462 Ac. "
- ㉑ 1609 Board of Park Commissioners 3-2-78 .189 Ac.
- ㉒ 658 THE BOARD OF PARK COMMISSIONERS OF THE COLS. & FRANKLIN CO. METRO. PARK DISTRICT 12-22-64 U.S.A. 8-12-67 .202 Ac.
- ㉓ 1630 U.S.A. 8-13-67 .167 Ac. "
- ㉔ 1826 RICHARD J. CASSIDY & JANIE A. SOMMER 10-31-83 1-Ac.