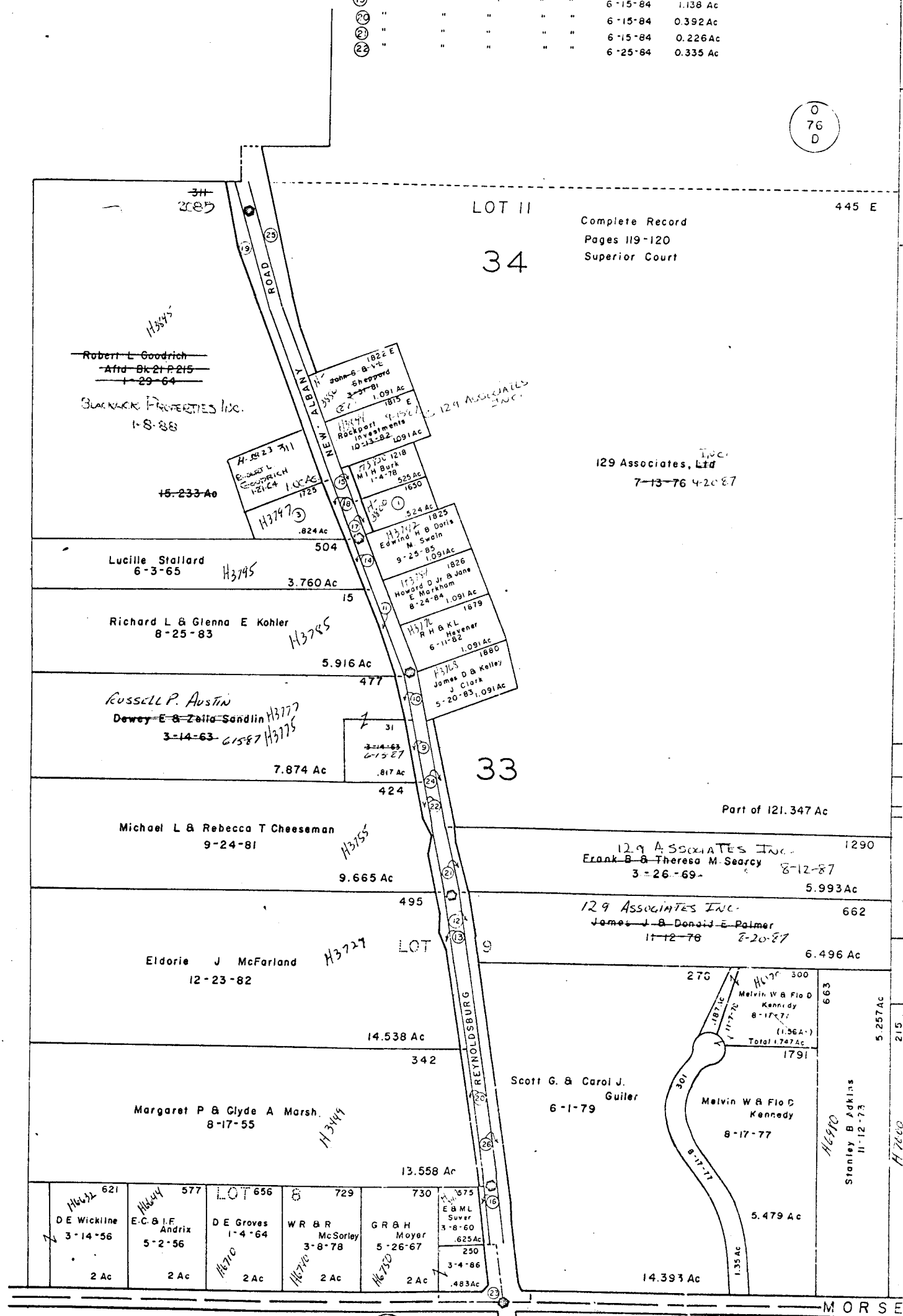


①	1650	James C. & Marjorie A Schall	1-19-82	.524 Ac
②	298	Robert M. & M. J. Tobin	5-27-88	.75 Ac
③	1725	G E Mantor & Joyce L Browning	12-17-79	0.824 Ac
④				
⑤				
⑥	565	Shirley Anne Ballantyne	11-20-81	1.0 Ac
⑦	Drop	Franklin County Commissioners	2-9-84	0.135 Ac
⑧	"	" " " " " Hi-Way	2-16-84	0.0864 Ac
⑨	"	" " " " " " "	5-1-84	0.183 Ac
⑩	"	" " " " " " "	5-1-84	0.126 Ac
⑪	"	" " " " " " "	5-2-84	0.267 Ac
⑫	"	" " " " " " "	5-2-84	0.251 Ac
⑬	"	" " " " " " "	5-7-84	0.462 Ac
⑭	"	" " " " " " "	5-16-84	0.157 Ac
⑮	"	" " " " " " "	5-16-84	0.124 Ac
⑯	"	" " " " " " "	5-21-84	0.129 Ac
⑰	"	" " " " " " "	5-21-84	0.125 Ac
⑱	"	" " " " " " "	5-24-84	0.176 Ac
⑲	"	" " " " " " "	6-15-84	1.138 Ac
⑳	"	" " " " " " "	6-15-84	0.392 Ac
㉑	"	" " " " " " "	6-15-84	0.226 Ac
㉒	"	" " " " " " "	6-25-84	0.335 Ac

0
76
D

0
75
J

0
38
A



Complete Record
Pages 119-120
Superior Court

445 E

LOT II
34

129 Associates, Inc.
7-13-76 4-20-87

Part of 121.347 Ac

129 ASSOCIATES INC. 1290
Frank B. & Theresa M. Searcy 8-12-87
3-26-69- 5.993 Ac

129 ASSOCIATES INC. 662
James J. & Donald E. Palmer 8-20-87
11-12-76 6.496 Ac

Melvin W & Flo D Kennedy
8-17-77
Total 1747 Ac
1791

Scott G. & Carol J. Guiler
6-1-79

Melvin W & Flo D Kennedy
8-17-77

Stanley B Adkins
11-12-73

621 DE Wickline 3-14-56 2 Ac	577 E.C. & I.F. Andrix 5-2-56 2 Ac	LOT 656 DE Groves 1-4-64 2 Ac	729 WR & R McSorley 3-8-78 2 Ac	730 GR & H Moyer 5-26-67 2 Ac	735 E & M L Sover 3-8-60 250 3-4-86 .483 Ac
---------------------------------------	---	--	--	--	--

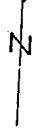
5.479 Ac
14.393 Ac

MORSE

JEFFERSON

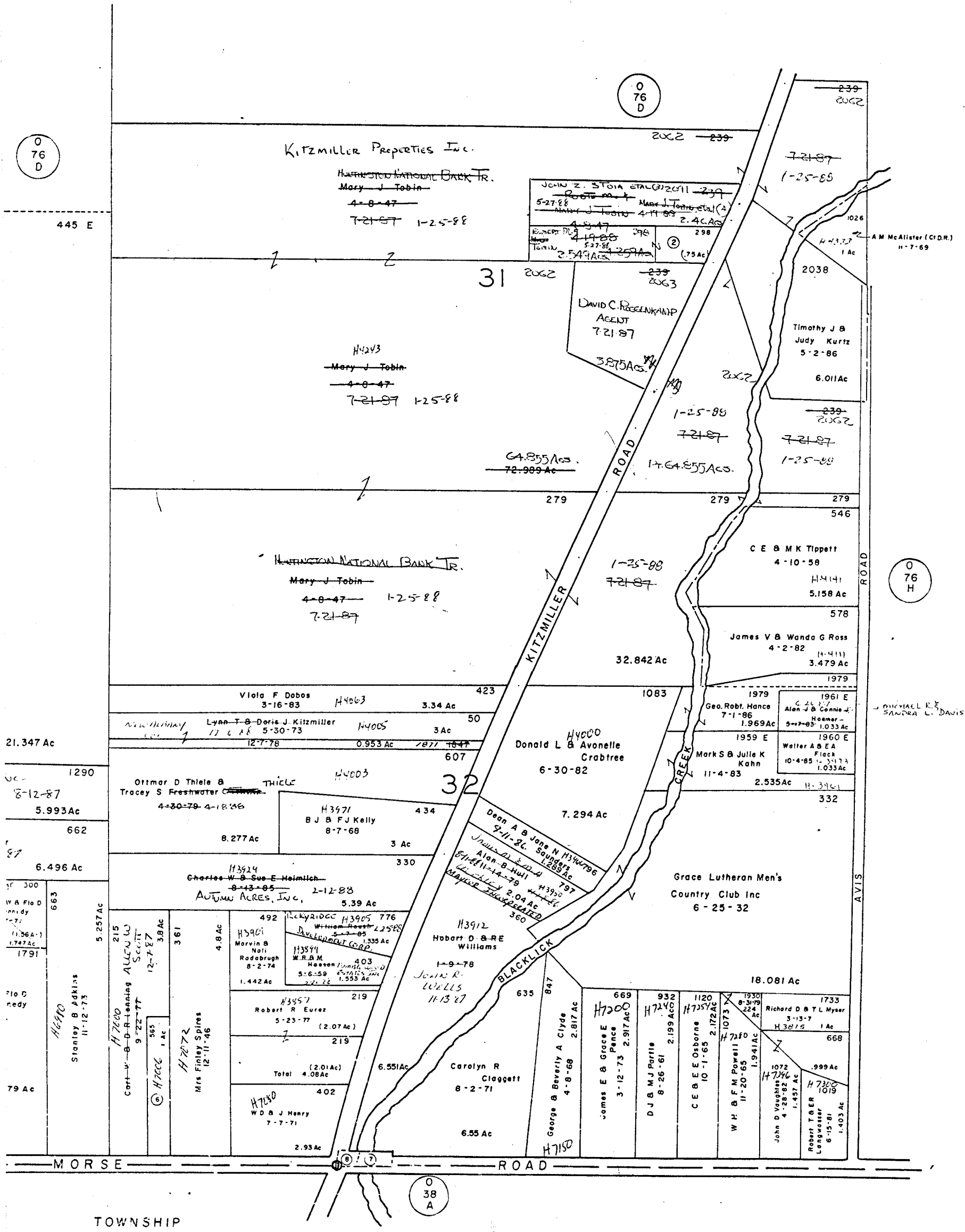
TOY

O-76-G
PLAIN TWP
R.16 TWP.2



SCALE 1"=200'
E = HIGHWAY EASEMENT
TAXING DISTRICT - DISTRICT CODE
PLAIN TWP 220
FRANKLIN CO SURVEY MONUMENT
H--- HOUSE NUMBERS

23	Drop	Franklin County Commissioners (Hi-Way)	6-25-84	0.271 Ac
24	"	"	6-29-84	0.391 Ac
25	"	"	6-29-84	0.993 Ac
26	"	"	2-5-85	1.077 Ac
27	1522	PATRICIA A. MCGHEE	11-12-87	1.091 Ac



O-76-G