

0  
73  
A

130 130 130

5-8-75

(15Ac)

130

5-8-79

1908

Richard M.  
&  
Kathryn  
Lehman

7-25-79

5.00Ac.

Herbert A. Bornstein &  
American Energy Services, Inc.  
5-8-79

H-7453  
10-2-87

H-7452  
BRUCE C &  
W. D.  
GWINN  
7-8-85

CHILTON & F. K. GWINN  
Charlotte-A. Bell  
6-20-75 H-7419  
7-2-84

H-7401  
1-2-84

H-7451  
Wanda L. & Alva McKinney  
5-13-75

H-7450  
Harvey J. & Anna  
4-18-73  
R.O.T. A. U. U. S. B.  
5-2-87

H-554887  
C.C. & J.L.  
HARRIS  
7-10-80  
C.A.  
RHODES  
3-2-87  
1.00Ac.

1886  
Roberts  
Taylor  
CONST. &  
DEVELOP.  
8-20-80  
9-22-86  
H-5522  
1.00Ac.

1885  
DORIS L. A.  
WINSHIP  
2-22-80  
H-5521  
1.00Ac.

1884  
Richard L.  
WETS  
2-22-80  
H-5520  
1.00Ac.

H-5519  
1.00Ac.

H-5518  
1.00Ac.

H-5517  
1.00Ac.

H-5516  
1.00Ac.

WALNUT

H-5544  
1.00Ac.

H-5543  
1.00Ac.

1-13-58

H-7447  
1-13-58

12

Donald W. & Lois A. English  
3-4-70

H-55481

H-7433  
Paul S. Hillenbrand  
7-18-76

H-7401  
1-13-58

H-7373  
Charles L. & Margaret L.  
Hostlow  
9-20-77  
1.67Ac.

79Ac

ROAD

R.R. 19 P. 89

0  
73  
A

0  
73  
A

0-73-E

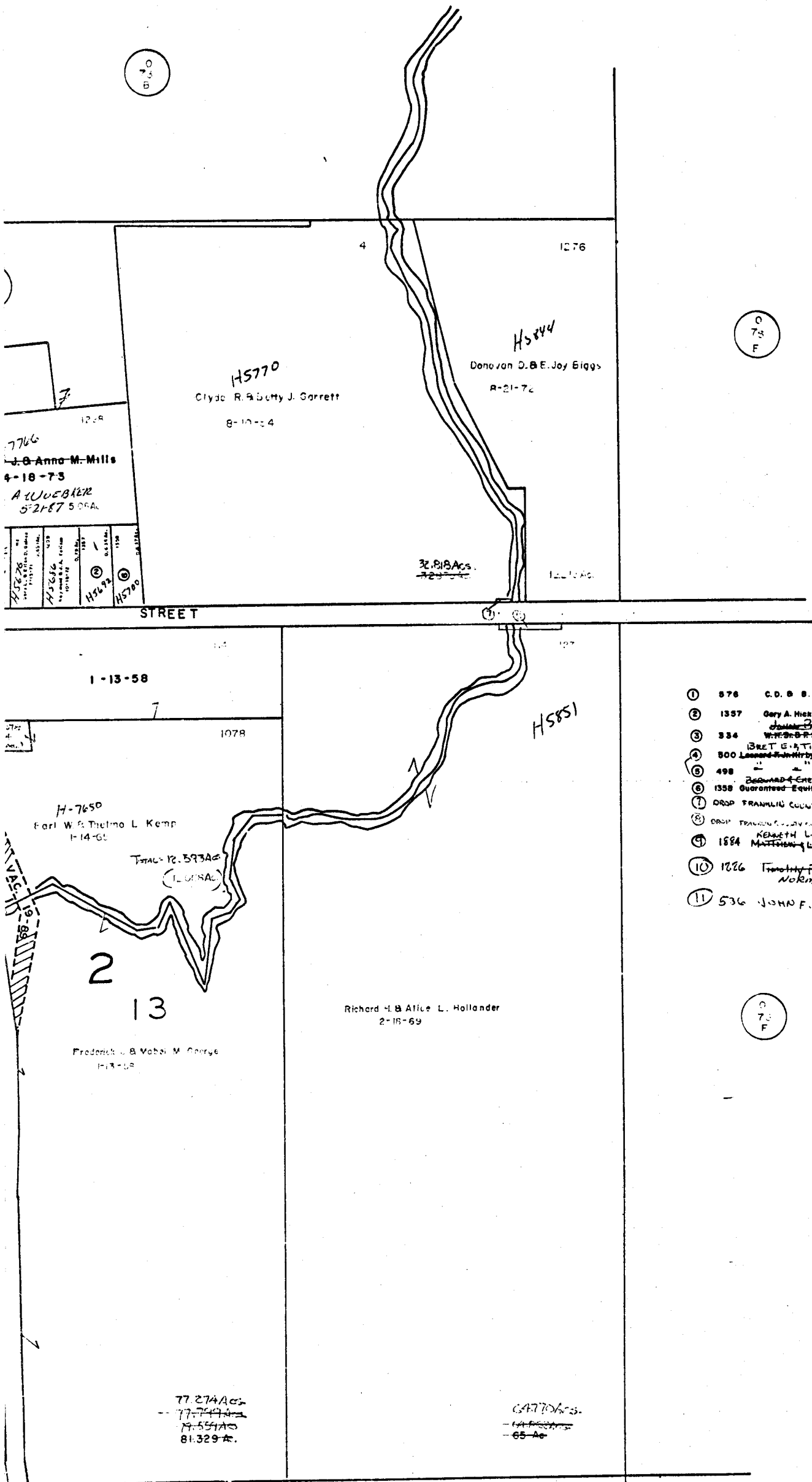
PLAIN TWP  
R.16 TWP2



SCALE 1" = 200'  
E=HIGHWAY EASEMENT  
TAXING DISTRICTS DISTRICT CODE  
PLAIN 220

H... HOUSE NUMBER

Franklin County Survey Adjunct



- ① 876 C. D. B. E. McKnight 4-1-74 .635 Ac.
- ② 1337 Gary A. Hickman 8-18-77 .636 Ac.
- ③ 334 W. R. B. P. Temple 8-30-79 .5 Ac.
- ④ BRET E. & TINA B. LEVIN 11-15-85 0.635 Ac.
- ⑤ 800 Leonard R. & Shirley B. Dione Anderson 5-15-77 "
- ⑥ 498 " " " " " " " " " " " "
- ⑦ 1338 Guaranteed Equity, Inc. 7-15-81 0.637 Ac. RICHARD E. H. M. CONRAD
- ⑧ DRIP FRANKLIN COUNTY COMMISSIONERS 10-15-81 0.661 Ac.
- ⑨ DRIP FRANKLIN COUNTY COMMISSIONERS (H. C. H. C.) 2-14-80 0.636 Ac.
- ⑩ 1884 KENNETH L. & JODY D. NICHOLS 5-3-85 1.007 Ac.
- ⑪ 1884 MATTHEW & LENA SOSNOWSKI 8-10-84 1.007 Ac.
- ⑫ 1826 Timothy P. & D. S. Paulson 6-13-84 1.0 Ac.
- ⑬ 536 JOHN F. & KAY A. EATON 8-7-88 0.652 Ac.

0-73-E