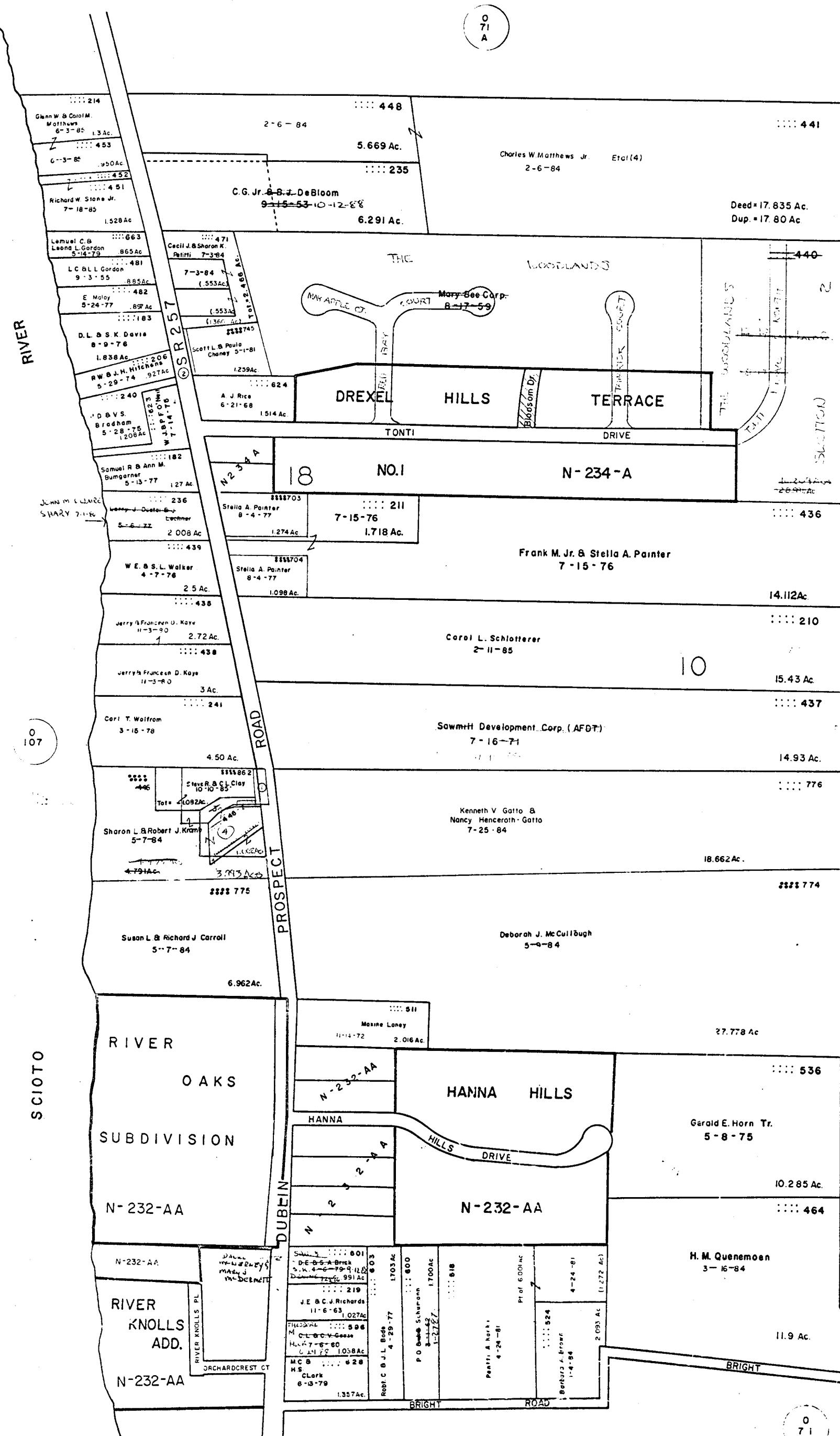


0
7
1
A



RIVER
TWP.

0
107

WASHINGTON

SCIOTO

2

N-23
N-232

0
7
1
D

O-71-C
PERRY TWP.
R.19 TWP.2



SCALE 1"=200'
E=HIGHWAY EASEMENT
TAXING DISTRICTS DISTRICTS CODE
PERRY-DUBLIN CORP 215
FRANKLIN COUNTY SURVEY INSTRUMENT

- ① DROP - VILLAGE OF DUBLIN 4-25-78 0.128 Ac.
- 2 Drop - Village of Dublin 5-5-81 0.166 Ac.
- 3- 225701 Sharon L. Kromb 2-25-77 0.204 Ac.
- ④ 933 KOCHIRO SHINAGAWA 12-19-80 1.062 Ac.
- ⑤ DROP - FRANKLIN COUNTY COMMISSIONERS (HI-WAY) 6-24-87 0.15 Ac.
- ⑥ DROP FRANKLIN COUNTY COMMISS. (HI-WAY) 8-13-87 0.145 Ac.
- ⑦ DROP FRANKLIN COUNTY COMMISSIONERS (HI-WAY) 9-30-87 0.152 Ac.
- ⑧ DROP - FRANKLIN COUNTY COMMISSIONERS (HI-WAY) 9-30-87 0.538 Ac.
- ⑨ DROP FRANKLIN COUNTY COMMISSIONERS (HI-WAY) 8-5-88 0.247 Ac.
- ⑩ DROP - FRANKLIN COUNTY COMMISSIONERS (HI-WAY) 1-4-89 0.144 Ac.

O
71
B

FIRST NATL BANK
OF CINCINNATI TR
SAWMILL PARTNERS INVESTMENT CO. NO. II.

Summer 8 Co.
~~3-18-74~~
7-14-86 8-6-86

Deed = 73.74 Ac.
Dup. = 68.259 Ac.

619

200
Summer 8 Co.
~~3-18-74~~
7-14-86 1.741 Ac.

215

2

9

8

O
72
D

SAWMILL PARTNERS INVESTMENT CO.
SAWMILL DEVELOPMENT CORP. (AFDT)

~~7-18-74~~
11-17-85

Deed = 99.2 Ac.
Dup. = 100 Ac.

230

Sawmill Development Corp. (AFDT)

~~7-18-74~~
11-17-85

22.131 Ac.

449

Charles W. & Mary E. Hartsough
5-8-46

William D. & M.C. Pope
9-29-72
19.038 Ac.
19.285 Ac.

John F. & Deborah A. McGibbon
11-8-82
3.272 Ac.

C. B. M. A. Abey
7-11-83 8-12-87
2.488 Ac. 2.531 Ac.

MILLER PARTNERS
Sawmill Baptist Church
12-5-82
10.218 Ac.

GLENBRIAR

KIPLINGER

N-232D
ESTATES

DRIVE
MACDUFF WAY
MACDUFF PL

N-232-D

N-232-D

4-1-80
Cathy M. Thomas & James Nibert
9-28-82
3.07 Ac.

3-18-70
534 Ac.

4-1-80
Cathy M. Thomas & James Nibert
9-28-82
3.07 Ac.

4-1-80
Cathy M. Thomas & James Nibert
9-28-82
3.07 Ac.

4-1-80
Cathy M. Thomas & James Nibert
9-28-82
3.07 Ac.

4-1-80
Cathy M. Thomas & James Nibert
9-28-82
3.07 Ac.

4-1-80
Cathy M. Thomas & James Nibert
9-28-82
3.07 Ac.

4-1-80
Cathy M. Thomas & James Nibert
9-28-82
3.07 Ac.

4-1-80
Cathy M. Thomas & James Nibert
9-28-82
3.07 Ac.

4-1-80
Cathy M. Thomas & James Nibert
9-28-82
3.07 Ac.

4-1-80
Cathy M. Thomas & James Nibert
9-28-82
3.07 Ac.

O-71-C
1028