

DELAWARE

222223 Bonnie S. Dietrich Etal 12-27-85
222269 City of Columbus 5-4-88

222217

Edward F. Hutchins
6-3-60

20

16.9Ac.

222208

222229
222234
222235

N-234

WOODLAND DRIVE

FOREST HILL CLUB

Woodland Hills
12-30-66

4

TWP.

BEAVER HILL

LAURA HILL

SUB. O'SHAUGHNESSY

WESTBURY HILLS ROAD

N-233-4

MAUMEE ROAD

ARROWHEAD ROAD

RIDGE ROAD

DORAG DAVIDSON RIVER SIDE N-233

0 107

2222521 Eleanor L. Chil-Cote 6-12-87
2222484 Thero L. Garber 8-24-88
2222532 L.K. Schaefer 3-16-78

W A S H I N G T O N

2222458 Russell C. & Paula J. Knotts 6-21-85 1785 Ac.	2222466 Sheryl L. Trick 3-12-86 0.902 Ac.	2222469 JUDY W. ELLIS 8-19-78 0.917 Ac.	2222467 Kevin Cassidy 8-28-84 0.805 Ac.	2222192 Marie E. Minor 3-23-87 0.881 Ac.	2222634 E. R. Poylag 4-21-82 1.398 Ac.	2222512 John C. & Joyce K. Kasper 9-8-86 1.201 Ac.	2222588 Jo Ann Sheets 12-13-84 1.181 Ac.	2222519 Jerome L. & Merle Ann Keller 8-19-82 1.081 Ac.	2222535 Mack J. & C. W. Parkhill 7-9-76 1.122 Ac.	2222591 Mark A. & Lynn L. Pyron 7-7-87 1.100 Ac.
2222237 Gerald B. Davis 8-1-78 2531 Ac.	2222621 John A. II. & M.E. Guy 6-10-77 1.927 Ac.	2222629 John A. Jr. Guy 3-29-79 1.833 Ac.	2222496 John F. Hribal 5-11-87 164 Ac.	2222495 Jay R. & Deborah C. Var Hulet 7-6-88 1.9538 Ac.	2222475 Sandra R. C. Wise 11-5-85 1.237 Ac.	2222680 David H. & Sally A. Fisher 6-15-88 2.089 Ac.	2222680 Cin. R. & Lir Johansen 8-14-80 2.07	2222658 Robt. A. & C. A. Manning	2222658 Homewood Corporation 6-11-86	

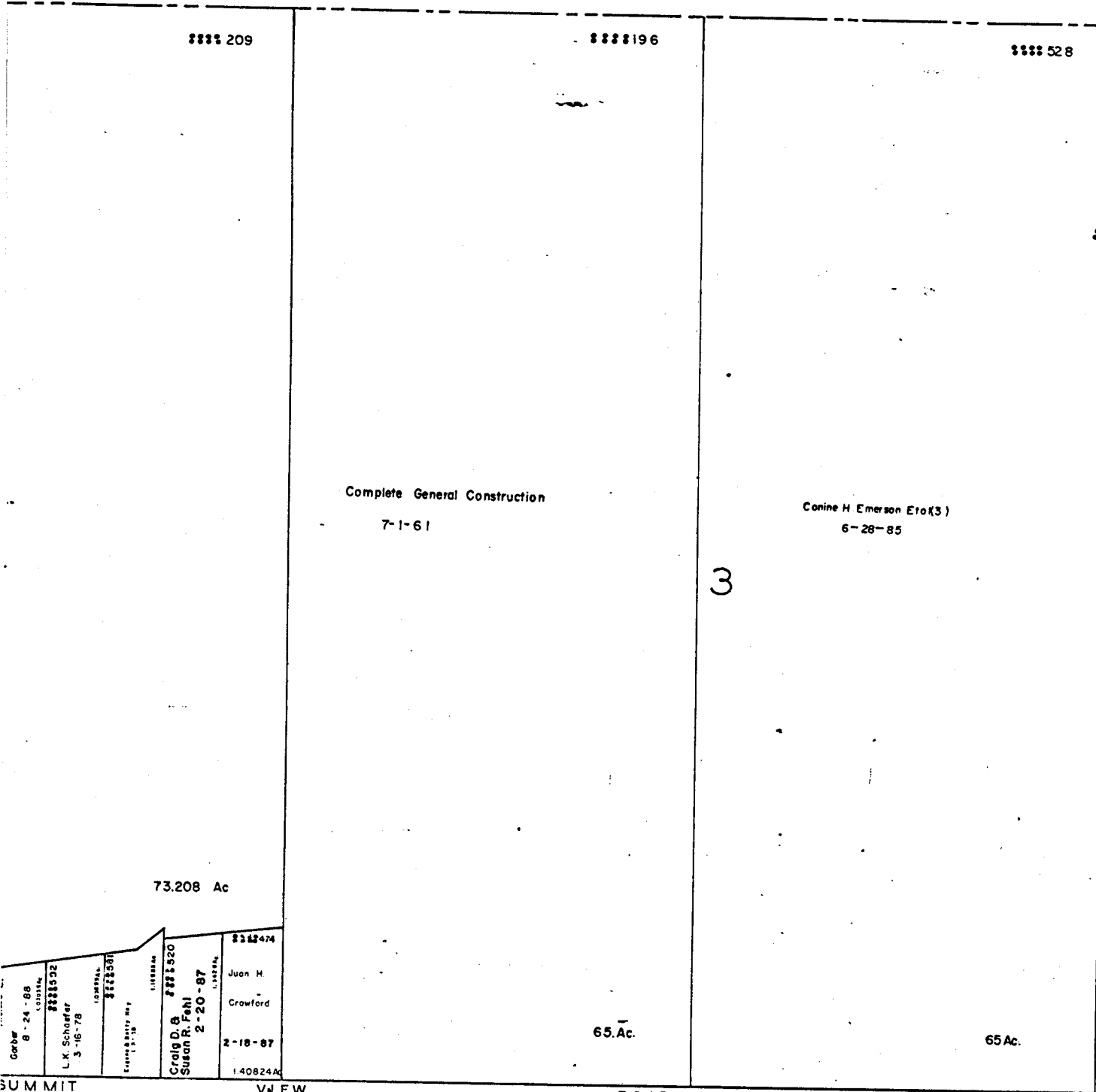
C O U N T Y

0-71-A

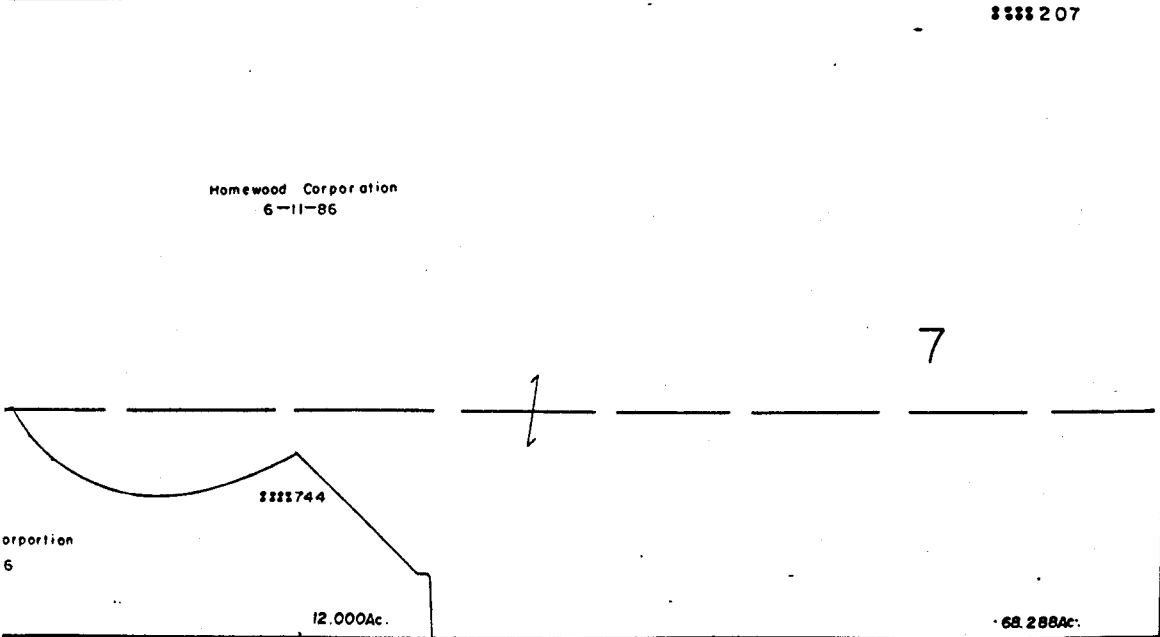
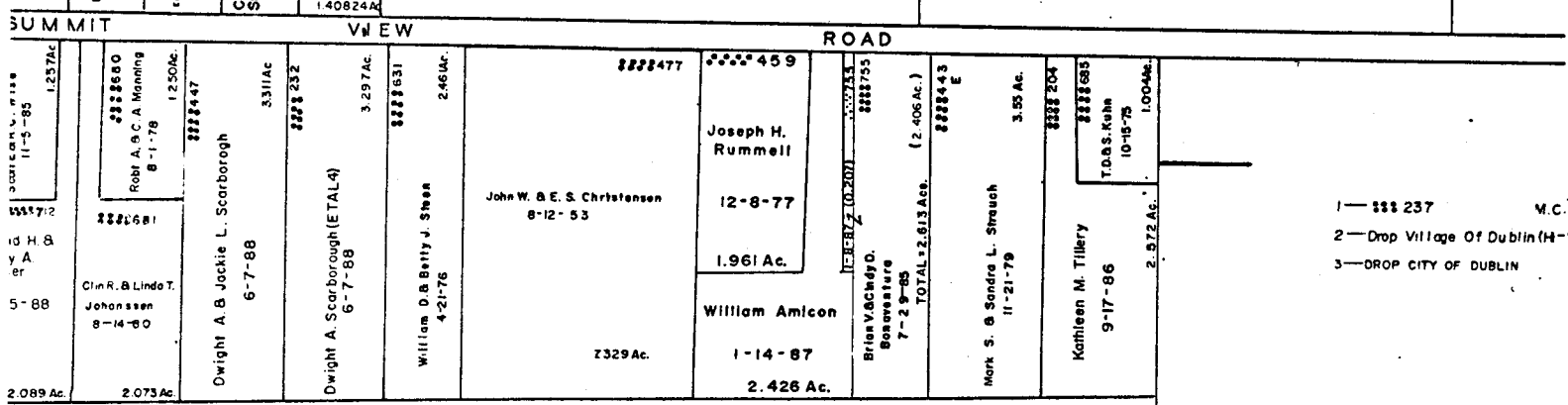
PERRY TWP
R.19 TWP2



SCALE 1" = 200'
E = HIGHWAY EASEMENT
TAXING DISTRICTS DISTRICT CODE
PERRY-DUBLIN S.D. 212
PERRY-DUBLIN CORP 215
H---HOUSE NUMBERS



0
71
B



0
71
B

0
71
C

0-71-A