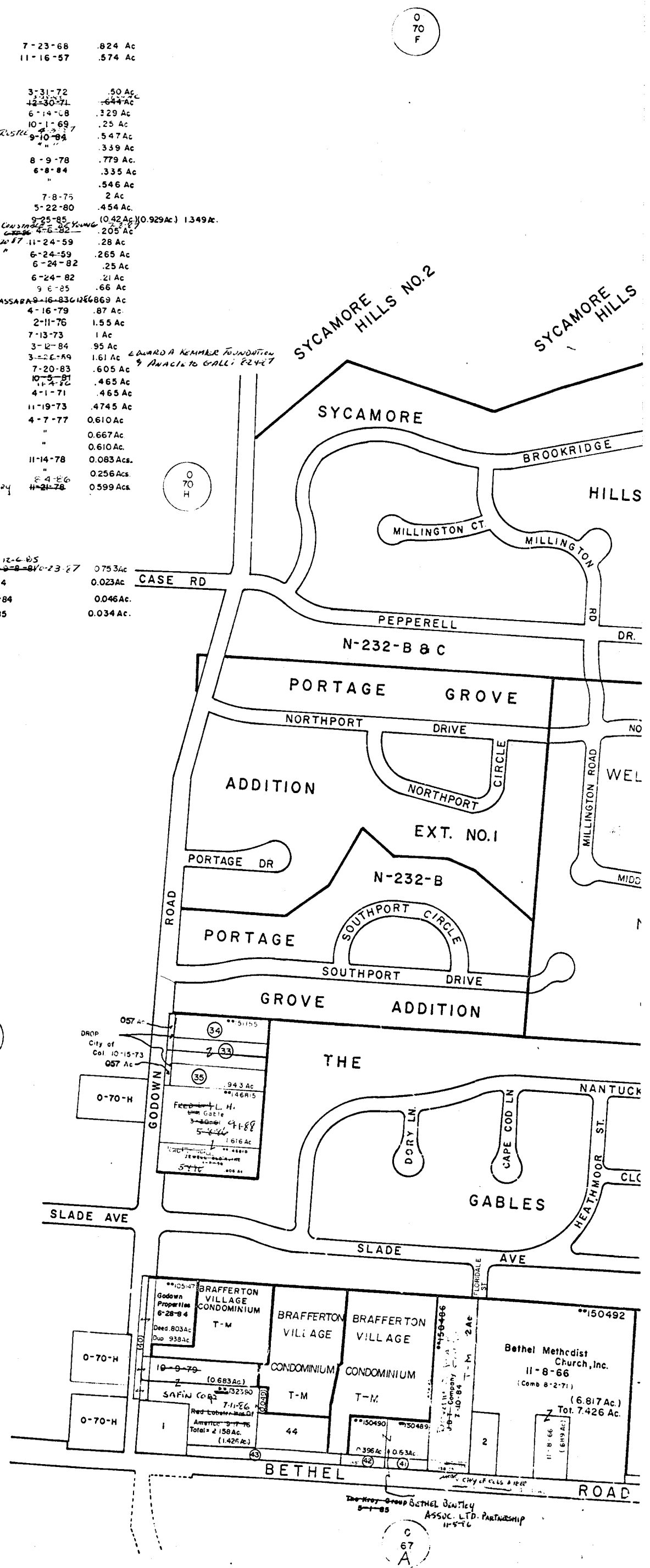


1	138788	Standard Oil Co	7-23-68	.824 Ac
2	150494	Bethel Methodist Church, Trs	11-16-57	.574 Ac
3				
4				
5	150481	Northwest Swim Club Inc	3-31-72	.50 Ac
6	151126	J.M. & P.J. Savage	12-30-71	.644 Ac
7	151267	Columbia Gas of Ohio Inc	6-14-68	.329 Ac
8	151131	Darlene M. Margard	10-1-69	.25 Ac
9	151163	Jill Gage <i>Adams Trust</i>	9-10-84	.547 Ac
10	151129	"	"	.339 Ac
11	151140	Joanna M. Brown	8-9-78	.779 Ac
12	151136	Byers Circle Investment Inc.	6-8-84	.335 Ac
13	151130	"	"	.546 Ac
14	151080	Wilson E. & R.R. Lee	7-8-75	.2 Ac
15	151172	Harold L. Jr & C.S. Toyner	5-22-80	.454 Ac
16	151172	Pamela A. Lanum	9-25-85	(0.42 Ac) (0.929 Ac) 1.349 Ac.
17	151125	James N. Miller	4-6-82	.205 Ac
18	151156	Fred W. & Ruth A. Schmidt	11-24-59	.28 Ac
19	151135	"	6-24-59	.265 Ac
20	151138	G. J. Warner	6-24-82	.25 Ac
21	151122	G. J. Warner	6-24-82	.21 Ac
22	151133	Mary V. Leasure	9-6-85	.66 Ac
23	151119	Douglas J. Baxter <i>W.A.K.L. MASSARA</i>	16-83-126869	Ac
24	151134	Susan H. Gossen	4-16-79	.87 Ac
25	151123	Ar La M. Aakins	2-11-76	1.55 Ac
26	151128	Hobart Dub. Bethel	7-13-73	1 Ac
27	151116	Lavera R. Disque	3-12-84	.95 Ac
28	151120	Ruth E. B. Juanita D. Jenkins	3-22-89	1.61 Ac <i>EDWARD A. KEMMER FOUNDATION</i>
29	126427	Donald E. & Cassandra J. Hines	7-20-83	.605 Ac <i>ANACLETO GALLI 82427</i>
30	137466	George E. & J. Jamison	10-5-81	.465 Ac
31	137467	B.L. & M.E. Burcher	4-1-71	.465 Ac
32	104068	R.A. & B.E. Moore	11-19-73	.4745 Ac
33	13929	James A. Kime	4-7-77	0.610 Ac
34	151155	"	"	0.667 Ac
35	151085	"	"	0.610 Ac
36	DROP CITY OF COLS.	"	11-14-78	0.083 Ac.
37	"	"	"	0.256 Ac.
38	179777	Fowler Realty Inc. <i>John W. & Lewis L. Barry</i>	8-4-86	0.599 Ac.
39	DROP CITY OF COLS.	"	12-6-78	0.45 Ac.
40	"	"	5-2-79	0.195 Ac.
41	"	"	"	0.207 "
42	"	"	"	"
43	"	"	"	0.751 "
44	193339	Hunter Savings Association <i>James S. & M. Papp</i>	9-2-86	0.753 Ac
45	Drop	Franklin County Commissioners	9-27-84	0.023 Ac
46	Drop	"	11-30-84	0.046 Ac.
47	Drop	"	1-16-85	0.034 Ac.



O
70
F

O
70
H

O
70
H

C
67
A

O-70-J

PERRY TWP

R. 19 TWP 2



SCALE 1"=200'

E=HIGHWAY EASEMENT

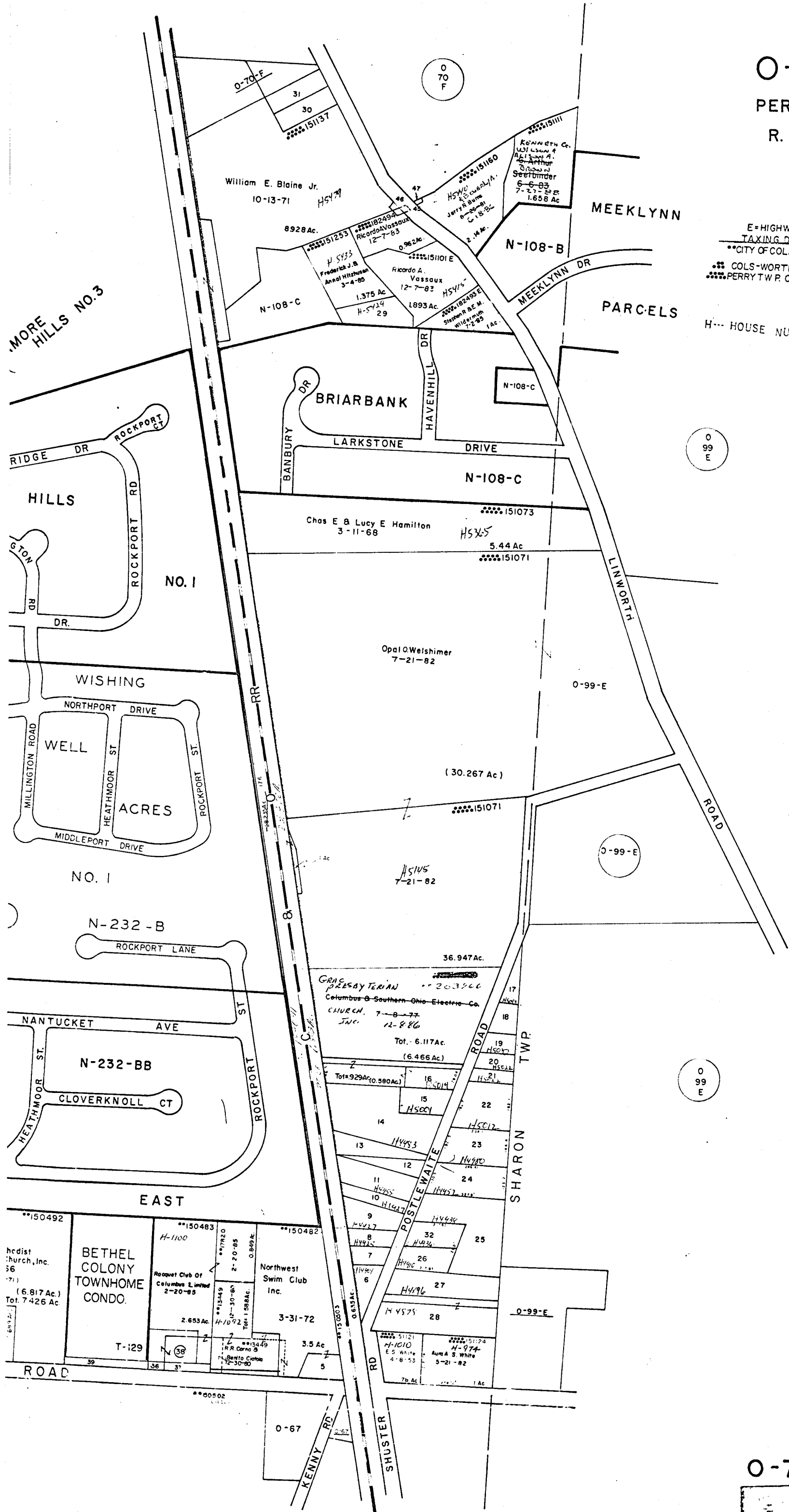
TAXING DISTRICTS DISTRICTS CODE

**CITY OF COLS 010

COLS-WORTHINGTON S.D. 610

PERRY TWP. COLS. S.D. 216

H--- HOUSE NUMBERS



O 99 E

O 99 E

O 99 E

O-70-J

1020