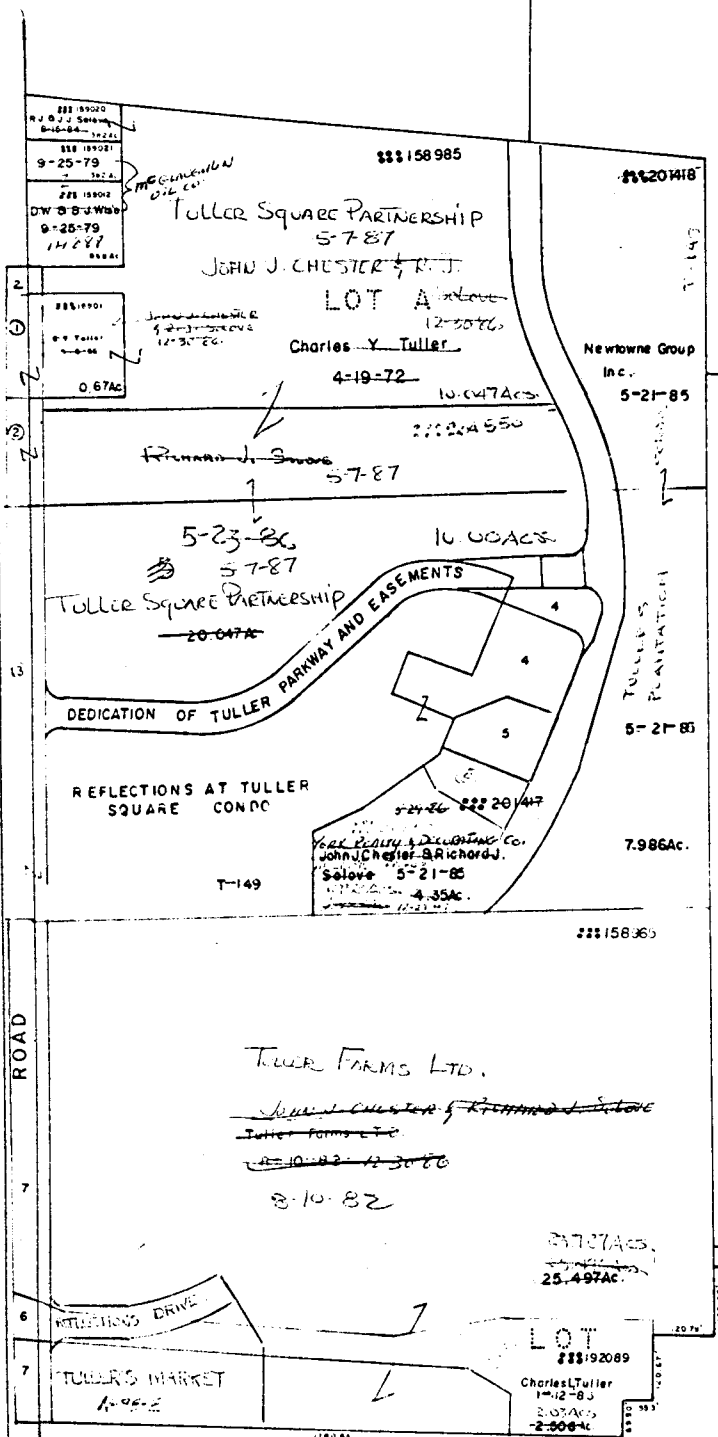


STATE

ROU

0
70
A

0-70-A



159030
159036
State of Ohio (O.S.U.)
11-30-59
4-27-60
21.65

0-70-A	12 AC	158972 4	158972 5
Adah S. Prushing Etal(4)	6-12-80	12-19-86	Survey 11.740 Ac
158960	158960	Mary A. Prushing-Fraist	1-20-84
Ohio State University	3-10-65	158970	7.51 Ac
Ohio State University Ed of Trs.	12-27-71	158971	7.51 Ac
Ohio State University	12-27-71	159024	7.51 Ac

SAWMILL ROAD

Complete Rec. 25 P 502
Probate Ct.

State of Ohio
Ohio State University
12-31-69

154.735 Ac.

Part of 50.4

0380

0380

0
70
G

0
70
A

0
70
A

0
70
B

O-70-D
PERRY TWP
R. 19 TWP. 2

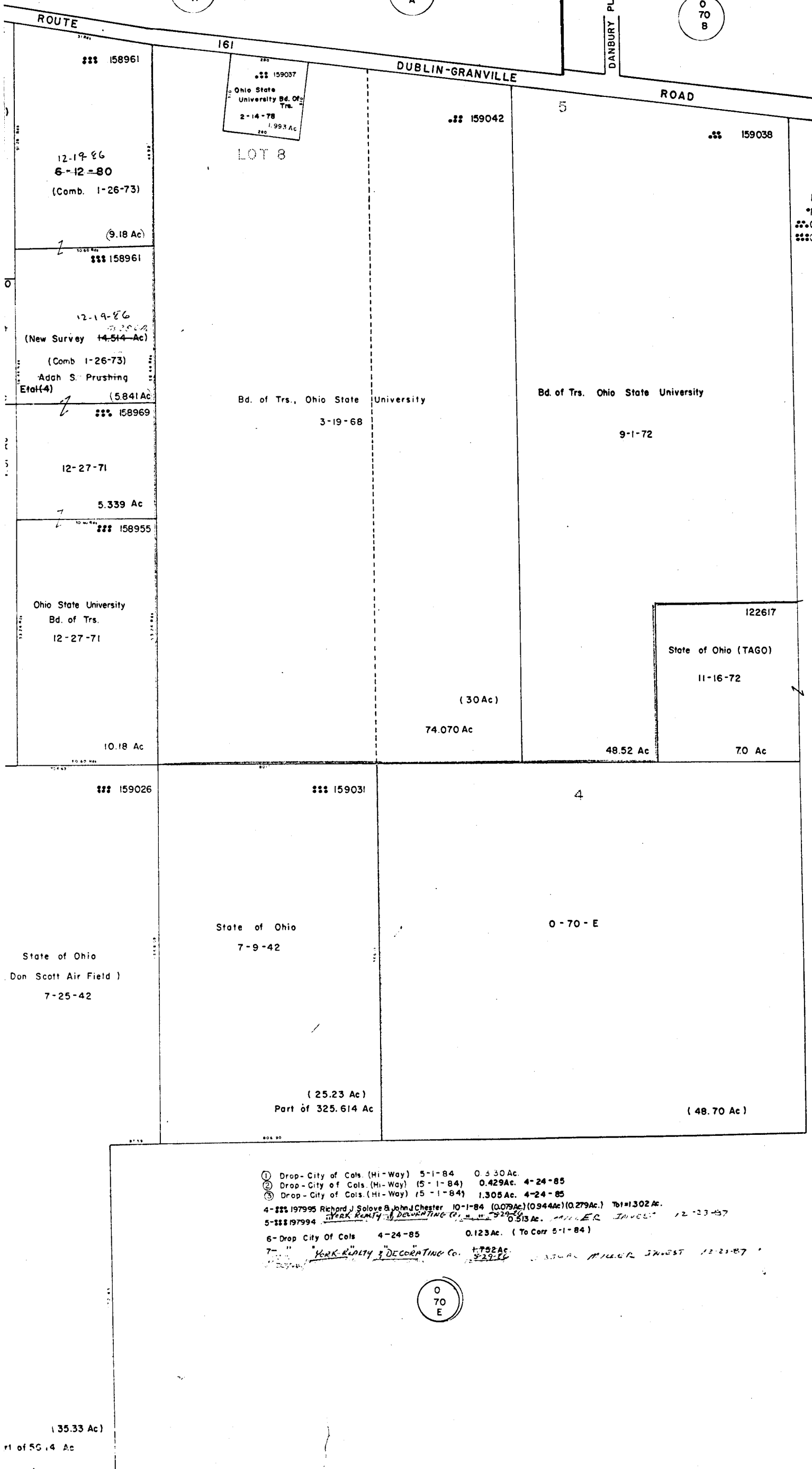


SCALE 1"=200'
E=HIGHWAY EASEMENT
TAXING DISTRICTS-DISTRICTS-CODE
PERRY-WORTH S.D. 213
*PERRY-DUBLIN S.D. 212
**COLUMBUS WORTH S.D. 61C
***COLUMBUS DUBLIN S.D. 590

0
70
E

0
70
E

0
70
E



159037
Ohio State
University Bd. Of
Trs.
2-14-78
1.993 Ac

LOT 8

12-19-86
6-12-80
(Comb. 1-26-73)

(9.18 Ac)

12-19-86
(New Survey 14.514-Ac)
(Comb 1-26-73)
Adah S. Prushing
Etag(4)

(5.841 Ac)

12-27-71

5.339 Ac

Ohio State University
Bd. of Trs.
12-27-71

10.18 Ac

159042

Bd. of Trs., Ohio State University
3-19-68

(30 Ac)

74.070 Ac

5

159038

Bd. of Trs. Ohio State University

9-1-72

48.52 Ac

70 Ac

122617

State of Ohio (TAGO)

11-16-72

159026

State of Ohio
(Don Scott Air Field)
7-25-42

(35.33 Ac)

Part of 56.14 Ac

159031

State of Ohio
7-9-42

(25.23 Ac)
Part of 325.614 Ac

4

O-70-E

(48.70 Ac)

- ① Drop - City of Cols. (Hi-Way) 5-1-84 0.330 Ac.
- ② Drop - City of Cols. (Hi-Way) (5-1-84) 0.429 Ac. 4-24-85
- ③ Drop - City of Cols. (Hi-Way) (5-1-84) 1.305 Ac. 4-24-85
- 4-159795 Richard J. Solove & John J. Chester 10-1-84 (0.079 Ac) (0.944 Ac) (0.279 Ac) Tot=1.302 Ac.
- 5-159794 YORK REALTY & DEVELOPING CO. 12-23-87 0.513 Ac. MILLER INVEST.
- 6-Drop City Of Cols 4-24-85 0.123 Ac. (To Corr 5-1-84)
- 7- YORK REALTY & DECORATING Co. 8-29-86 1.752 Ac. MILLER INVEST 12-23-87

O-70-D 1008

