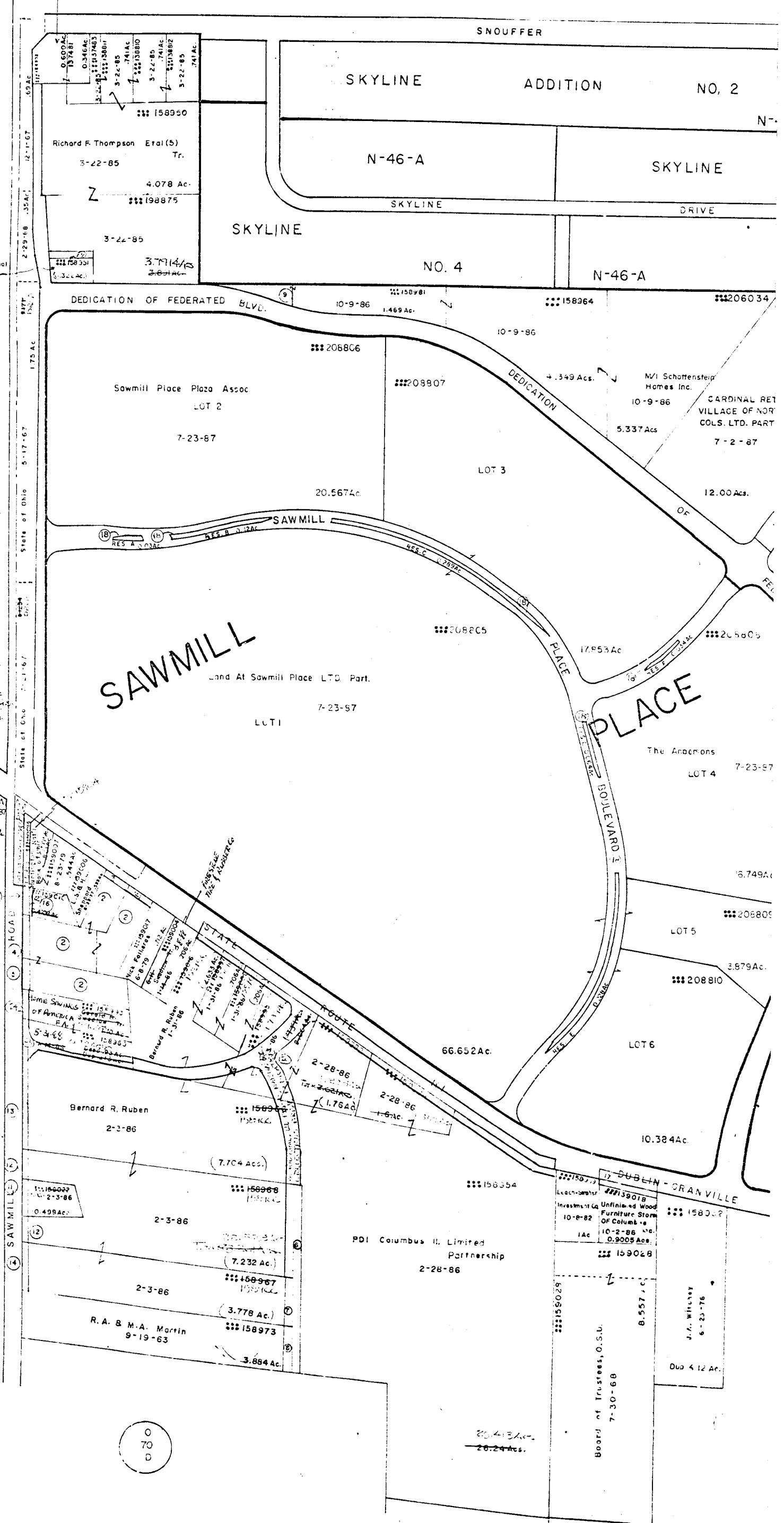


0
72
G

0
71
D

Franklin Federal
Savings & Loan
Assoc. 1-4-73



- 1- Drop City of Columbus 5-16-74 0.245Ac
- 2- Sawmill Plaza Assoc 2-12-85 20.567Ac
- 3- Drop City of Columbus 6-12-84 0.143Ac
- 4- Drop City of Columbus (Highway) 7-12-84 0.213Ac
- 5- Drop " " " " 7-12-84 0.143Ac
- 6- Drop " " " " 7-26-85 0.460Ac
- 7- Drop " " " " 7-26-85 0.117Ac
- 8- Drop " " " " 7-26-85 0.117Ac
- 9- M/I Schottenstein Homes Inc 10-9-86 0.203Ac
- 10- Drop City of Columbus (Highway) 4-6-85 0.055Ac
- 11- Drop " " " " 7-23-86 0.189Ac
- 12- Drop " " " " " " 0.137Ac
- 13- Drop " " " " " " 0.356Ac
- 14- Drop " " " " " " 0.168Ac
- 15- Drop " " " " " " 0.103Ac
- 16- Sawmill Plaza Assoc 7-23-87 20.567Ac
- 17- Drop City of Columbus (Highway) 3-25-87 0.292Ac

REPARCEL # 1005A
 Sawmill Plaza Assoc LTD No 1 7-23-87
 20.567 Ac
 7-23-87
 0.137Ac

REPARCEL # 1005B
 Sawmill Plaza Assoc LTD No 2 7-23-87
 20.567 Ac
 7-23-87
 0.137Ac

REPARCEL # 1005C
 Sawmill Plaza Assoc LTD No 3 7-23-87
 20.567 Ac
 7-23-87
 0.137Ac

REPARCEL # 1005D
 Sawmill Plaza Assoc LTD No 4 7-23-87
 20.567 Ac
 7-23-87
 0.137Ac

REPARCEL # 1005E
 Sawmill Plaza Assoc LTD No 5 7-23-87
 20.567 Ac
 7-23-87
 0.137Ac

0
70
A

0
70
D

0-70-A
PERRY TWP.
R.19 TWP.2

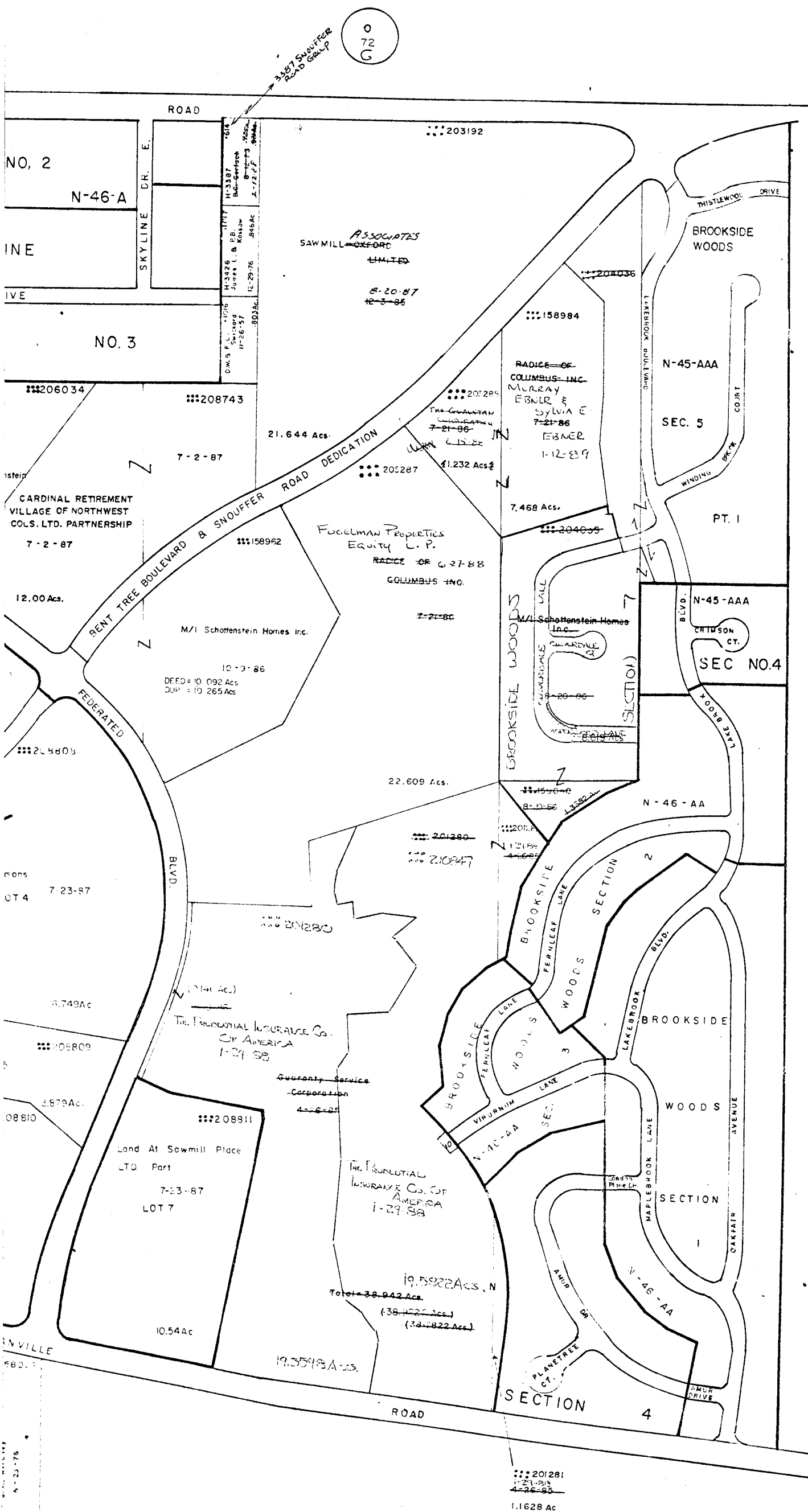
SCALE 1"=200'
E=HIGHWAY EASEMENT
TAXING DISTRICT DISTRICT CODE
PERRY-WORTHINGTON S.D. 213
PERRY-DUBLIN S.D. 212
COLUMBUS-DUBLIN S.D. 590
COLUMBUS-WORTHINGTON S.D. 610

H---HOUSE NUMBERS

NOTE: Dedication of Sawmill Place Boulevard
And Bentree Boulevard 11-12-86

RESERVES: All Reserves Owned By Land At
Sawmill Place Ltd 12-10-86
7-23-87

RES.	Acres
RES. "A"	0.030
RES. "B"	0.213
RES. "C"	0.285
RES. "D"	0.036
RES. "E"	0.223
RES. "F"	0.060



0
70
B

0
70
B

0
70
D