

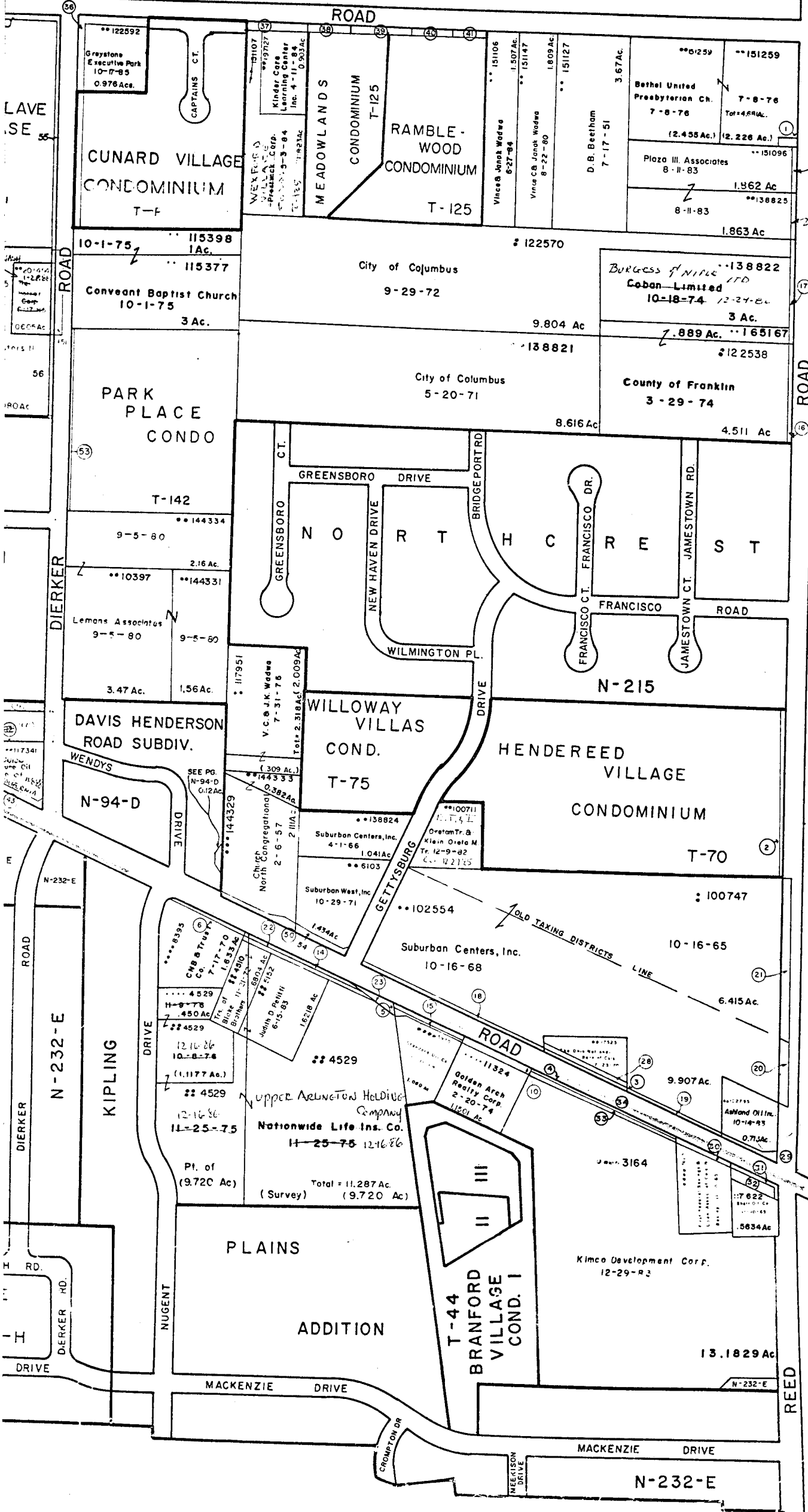


6-9-82	0.204 Ac.
7-22-82	0.224 Ac.
1-3-82	0.064 Ac.
5-25-82	0.006 Ac.
9-12-82	1.655 Ac.
8-16-82	0.207 Ac.
1-30-82	0.189 Ac.
7-29-83	0.183 Ac.
9-15-83	2.442 Ac.
9-12-83	0.134 Ac.
12-6-83	0.211 Ac.
6-5-84	1.071 Ac.
6-5-84	0.186 Ac.
5-1-84	0.212 Ac.
5-1-84	0.213 Ac.

(11) 24654 MORRIS-LORNS Co. 6-3-86 0.693 Ac.  
 (12) 24655 MORRIS-LORNS Co. 6-3-86 0.377 Ac.

**O-68-B**  
 PERRY TWP.  
 R.19 TWP.1

SCALE 1" = 200'  
 E-HIGHWAY EASEMENT  
 TAXING DISTRICTS DISTRICTS CODE  
 PERRY-DUBLIN S.D. 212  
 CITY OF COLS 010  
 COLS. ARLINGTON 580  
 UPPER ARLINGTON 070  
 COLS. DUBLIN S.D. 590  
 PERRY CORP. 210  
 PERRY-COLS. S.D. 210



HOUSE NO. 1111

- 1 122622 Columbia Gas of Ohio 11-19-71 .069 Ac.
- 2 DROP City of Columbus 12-7-70 .498 Ac.
- 3 DROP City of Columbus 8-3-70 .272 Ac.
- 4 DROP City of Upper Arlington 3-3-67 .118 Ac.
- 5 DROP City of Upper Arlington 3-3-67 .0567 Ac.
- 6 DROP City of Upper Arlington 7-17-70 .0620 Ac.
- 7 DROP City of Columbus 50x175' DB2819 PG178
- 8 DROP City of Columbus 9-9-69 .624 Ac.
- 9 3350 City of Upper Arlington 4-23-71 .107 Ac.
- 10 DROP City of Col. 10-2-73 .295 Ac.
- 11 2283 Bd. of Education of Upper Arlington 12-28-71 .001 Ac.
- 12 113194 Barry Bros. Realty Corp. 8-15-80 .392 Ac.
- 13 44333 North Congregational Church 2-6-57 .392 Ac.
- 14 DROP City of Upper Arlington 3-27-72 .1165 Ac.
- 15 DROP " " 9-18-72 .148 Ac.
- 16 42566 City of Col. 9-29-72 .293 Ac.
- 17 DROP " " 9-29-72 .307 Ac.
- 18 11692 " " 6-7-73 .144 Ac.
- 19 11764 " " 6-7-73 .386 Ac.
- 20 11738 " " 6-7-73 .143 Ac.
- 21 124182 Southwest Franklin Inc. 12-29-72 .351 Ac.
- 22 DROP City of Upper Arlington 1-9-73 .144 Ac.
- 23 DROP City of Col. 1-10-73 .078 Ac.
- 24 105335 Marilyn B. Davis 4-8-65 .367 Ac.
- 25 105996 " " " " .390 Ac.
- 26 105353 " " " " .420 Ac.
- 27 144328 Marilyn B. Davis 4-25-67 .070 Ac.
- 28 DROP City of Columbus 10-2-73 .065 Ac.
- 29 DROP City of Columbus 10-5-73 .419 Ac.
- 30 DROP City of Columbus 5-2-74 .232 Ac.
- 31 DROP City of Columbus 7-12-74 .048 Ac.
- 32 DROP City of Columbus 7-12-74 .140 Ac.
- 33 DROP City of Columbus 12-10-74 .124 Ac.
- 34 DROP City of Columbus 12-10-74 .354 Ac. (N ROAD)
- 35 DROP City of Columbus 1-16-78 .200 Ac.
- 36 " " " " 12-20-79 0.466 Ac.

37	DROP CITY OF COLUMBUS	11-4-78	0.274 Ac.
38	" " " "	12-4-79	0.179 "
39	" " " "	"	0.275 "
40	" " " "	"	0.179 "
41	" " " "	"	0.160 "

O-68-B