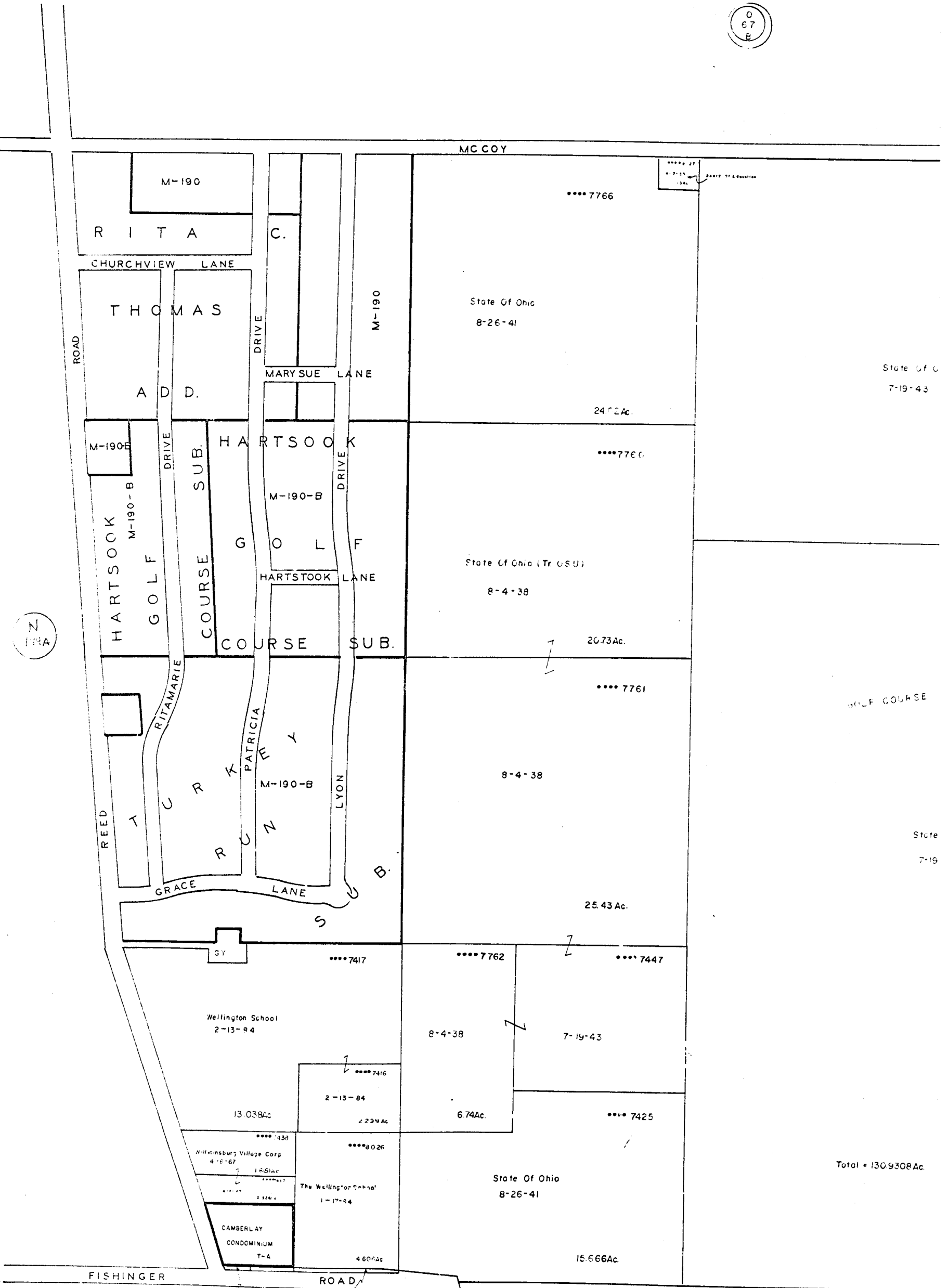


① DROP City of Upper Arlington 8-6-74 107Ac.
 ② 1943 Northwest Professional Group 5-20-87 0.023Ac.
 ③ 7754 THE TROUVILLE CO. 7-14-77 0.079Ac.

0
67
E

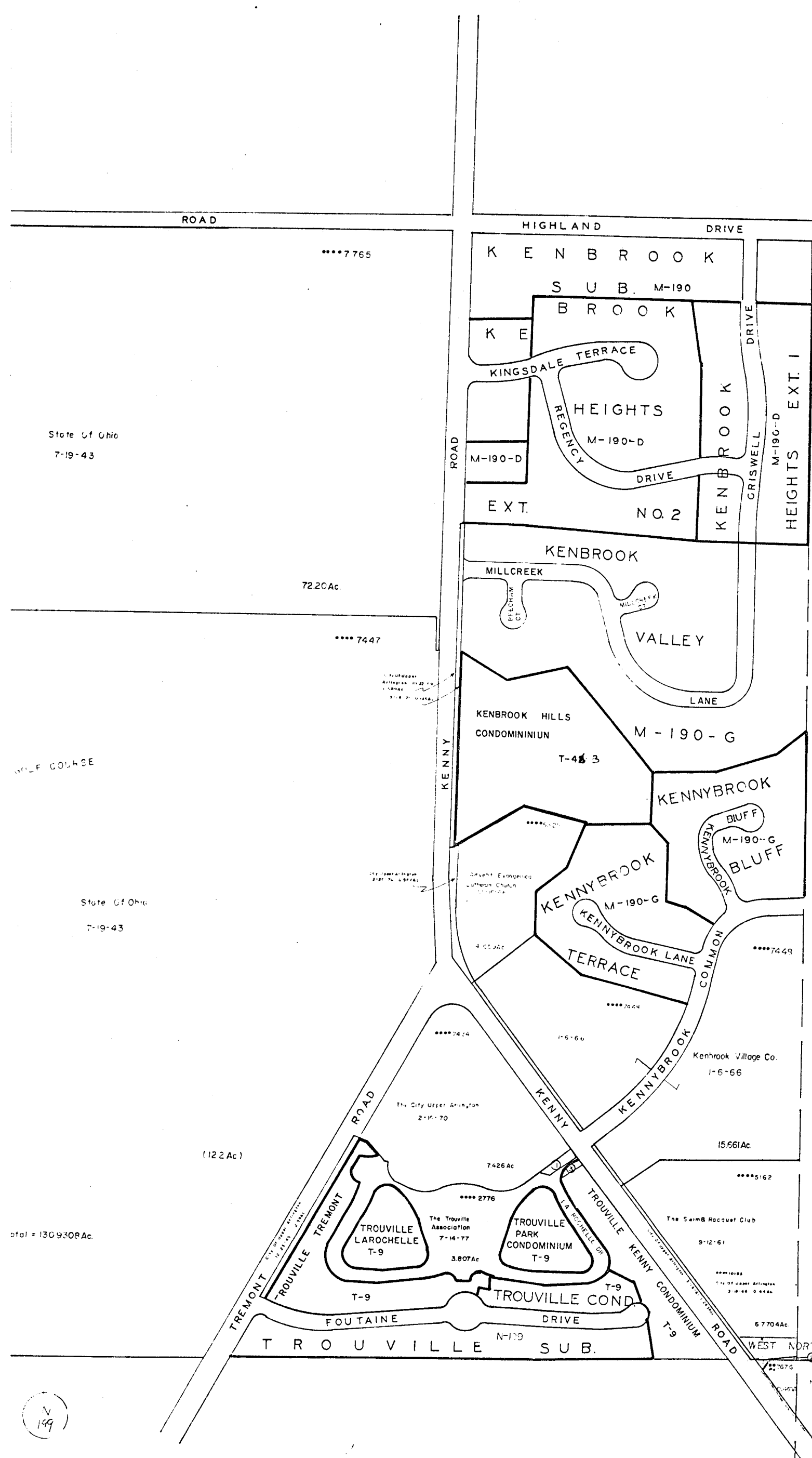


N
188A

N
199

0-67-C
PERRY TWP.
R. 19 TW. 1

SCALE 1" = 200'
HIGHWAY EASTMENT
TAXING DISTRICTS
UPPER ARLINGTON
City of Gales



State of Ohio
7-19-43

72.20Ac

**** 7447

GOLF COURSE

State of Ohio
7-19-43

(122 Ac)

total = 1309308Ac.

D 30

C L I N T O N

149

0-67-C

