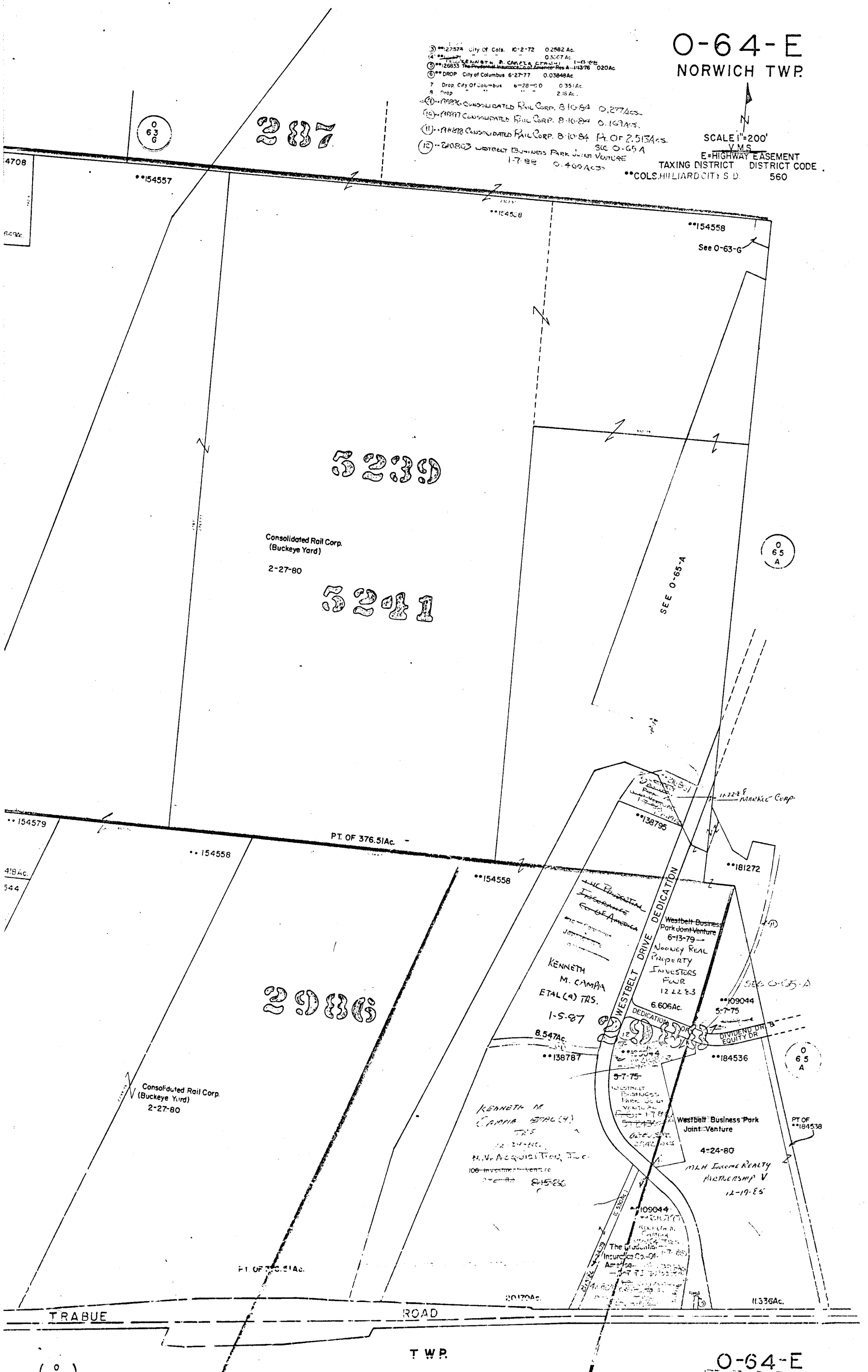




O-64-E  
NORWICH TWP.

- ③ 22574 City of Col. 10-2-72 0.2582 Ac.
- ④ 22575 City of Col. 10-2-72 0.3067 Ac.
- ⑤ 26933 The Prudential Insurance Co. of America Res A-11376 0.20 Ac.
- ⑥ DROP City of Columbus 6-27-77 0.03848 Ac.
- ⑦ Drop City of Columbus 6-28-80 0.351 Ac.
- ⑧ Drop " " " " 2.15 Ac.
- ⑩ 19996 CONSOLIDATED RAIL CORP. 8-10-84 0.277 Ac.
- ⑪ 19997 CONSOLIDATED RAIL CORP. 8-10-84 0.157 Ac.
- ⑫ 19998 CONSOLIDATED RAIL CORP. 8-10-84 Pt. OF 2.513 Ac. SEE O-65 A
- ⑬ 210803 WESTBELT BUSINESS PARK JOINT VENTURE 1-7-88 0.400 Ac.

SCALE 1"=200'  
V.M.S.  
E=HIGHWAY EASEMENT  
TAXING DISTRICT DISTRICT CODE  
DISTRICT CODE 560  
COLS. HILLIARD CITY S D



287

3239

Consolidated Rail Corp.  
(Buckeye Yard)  
2-27-80

3241

2986

TRABUE

ROAD

TWP.

O-64-E