

0
60
E

109

Evelyn Jerman
6-10-50

30.29 Ac.

12-12-60

107

Evelyn Jerman
8-18-72

30.29 Ac.

(20.34 Ac.)

110

Evelyn Jerman
8-18-72

50 Ac.

H-3686

352.71 22
Daniel L. & V.J.
Fridenmaker
2-10-87
H-3598 350.71 1211 Ac

111

Wilsie M. Breese & Marjia E. Dunlap
5-18-82

35.169 Ac.

17

5-18-82

H-3534

21

Nancy V. Spencer & Victoria Potts
5-16-83

36.38 Ac.

335

6638

Aimee Dysart
10-15-70

78 Ac.

112

James R. Sturgill
8-3-72

H-3240

5 Ac.

0
62
C

300

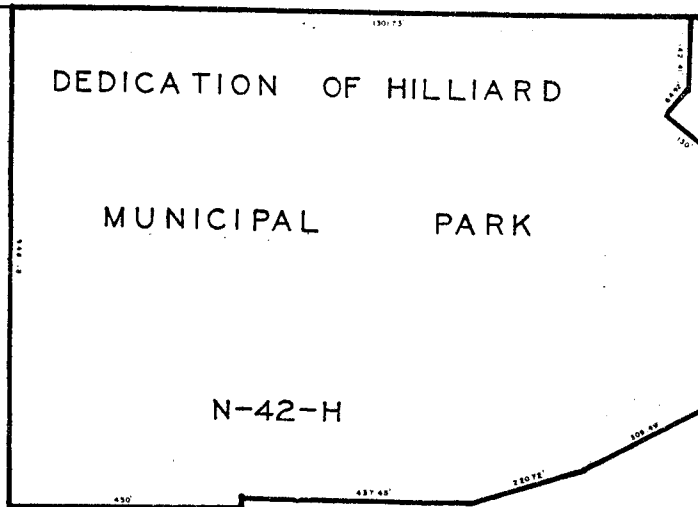
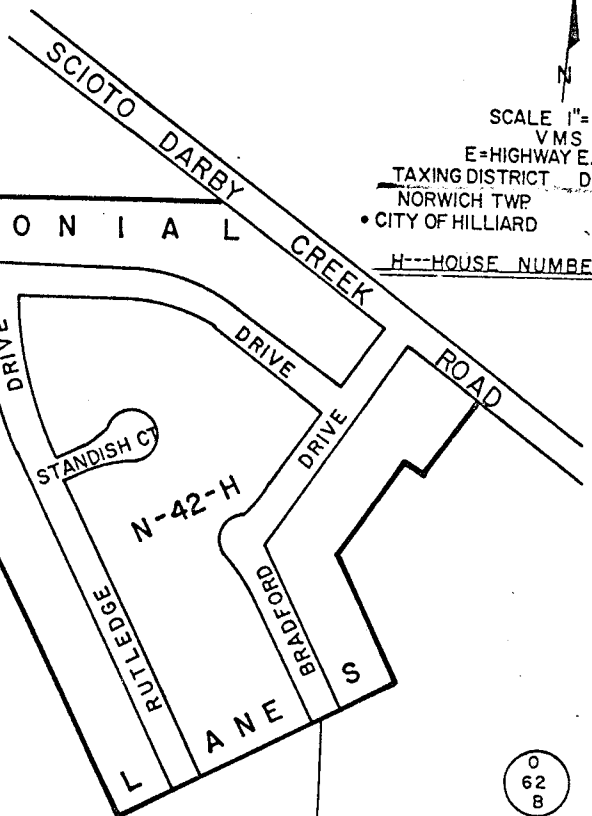
ZARING - CH.
Provident Burs.
9-30-81

O-62-A
NORWICH TWP

SCALE 1"=200'
VMS
E=HIGHWAY EASEMENT
TAXING DISTRICT DISTRICT CODE
NORWICH TWP 200
CITY OF HILLIARD 050
H---HOUSE NUMBERS

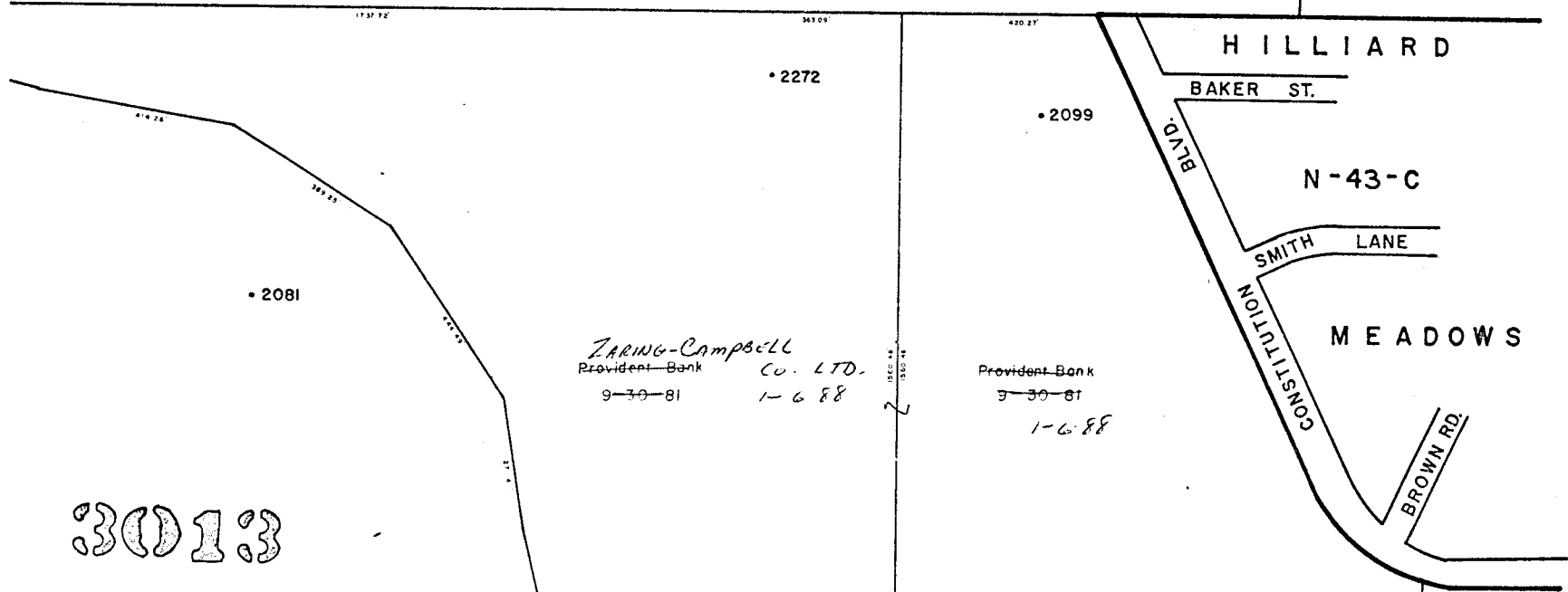
0
60
E

0
62
B



Edgar O. Kelley Etal (3)
12-12-72

79.436 Ac.

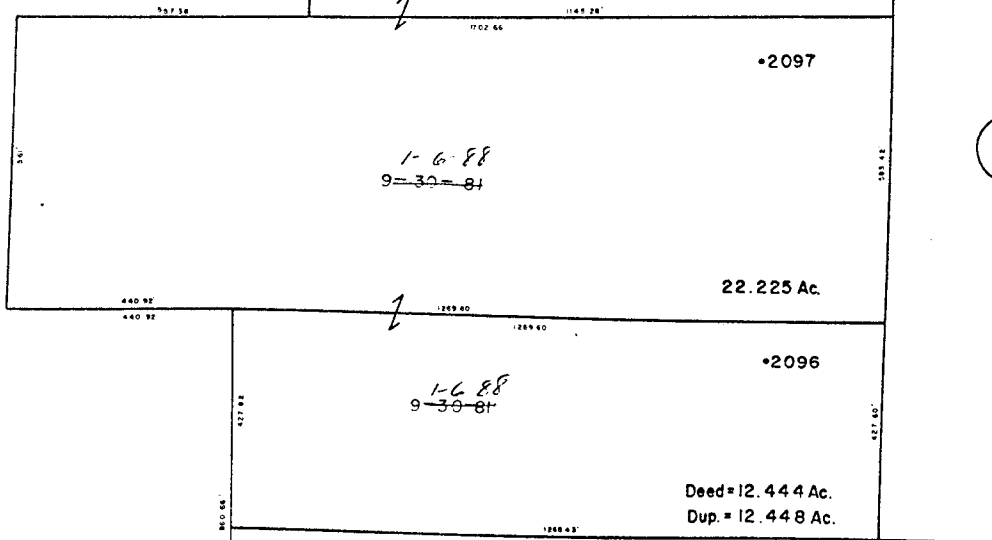


ZARING-Campbell
Provident Bank CO. LTD.
9-30-81 1-6-88

Provident Bank
9-30-81 1-6-88

28.958 Ac.

50.187Ac.



Deed = 82.033 Ac.
Dup. = 82.11 Ac.

3013

ZARING-Campbell Company LTD.
Provident Bank.
9-30-81 1-6-88

0
62
D

O-62-A

