

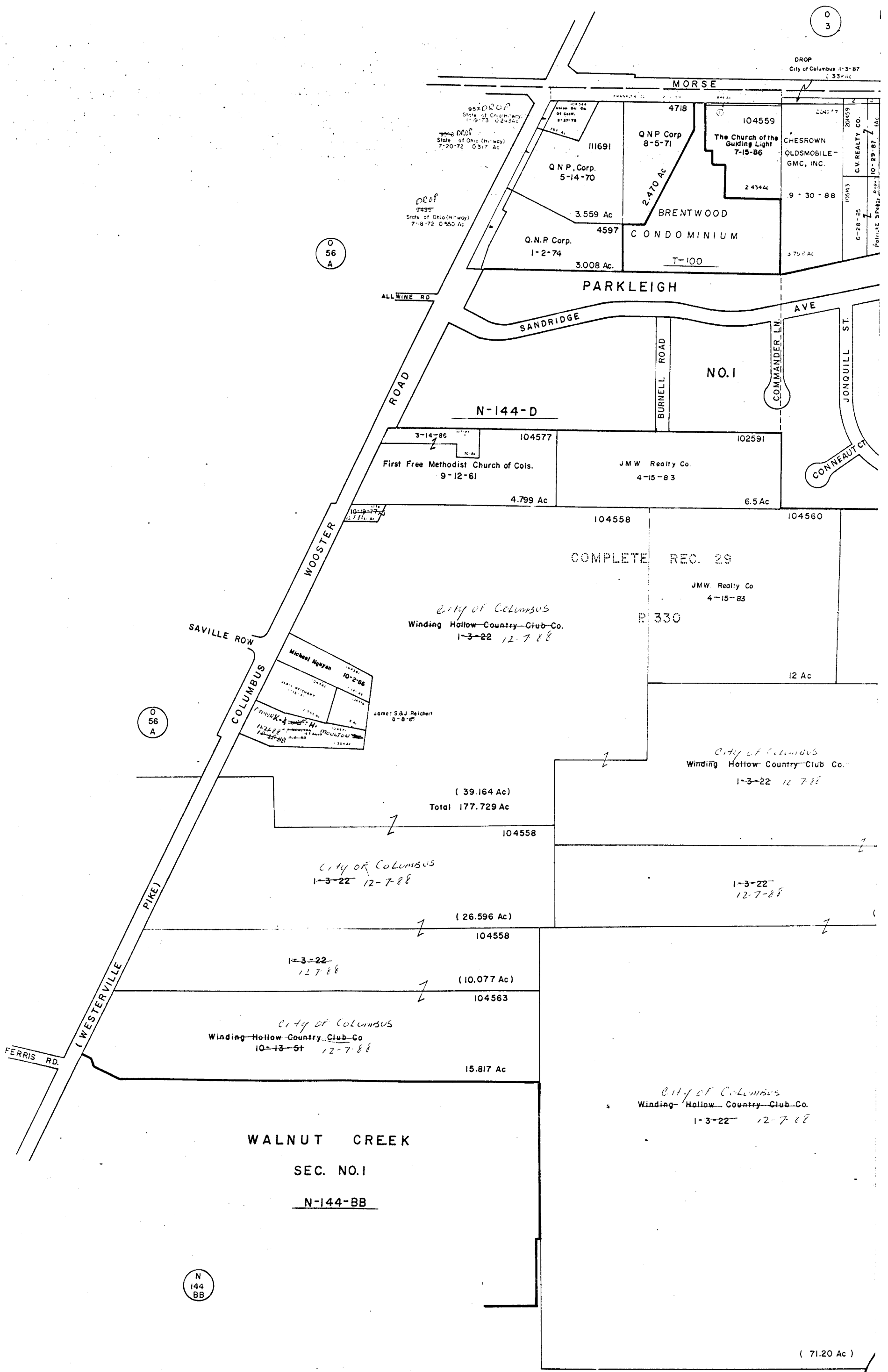
0
3

DROP
City of Columbus 11-3-87
C 337 AC

0
56
A

0
56
A

N
144
BB



MORSE

111691 Q.N.P. Corp. 5-14-70 3.559 Ac

4718 Q.N.P. Corp. 8-5-71 2.470 Ac

104559 The Church of the Guiding Light 7-15-86 2.434 Ac

CHESROWN OLDSMOBILE-GMC, INC. 9-30-88

Q.N.P. Corp. 1-2-74 3.008 Ac

BRENTWOOD CONDOMINIUM T-100 3.707 Ac

CV REALTY CO. 10-29-87 7 AC

6-28-85

PARKLEIGH

SANDRIDGE AVE

BURNELL ROAD

NO. 1

COMMANDER LN

JONQUILL ST

CONNEAUT CT

N-144-D

104577 First Free Methodist Church of Col. 9-12-61 4.799 Ac

102591 J.M.W. Realty Co. 4-15-83 6.5 Ac

104558 COMPLETE REC. 29

J.M.W. Realty Co. 4-15-83

104560 12 Ac

City of Columbus

Winding Hollow Country Club Co. 1-3-22 12-7-88

Michael Nguyen 10-2-86

James S & J Reichert 8-9-85

(39.164 Ac)

Total 177.729 Ac

104558

City of Columbus

1-3-22 12-7-88

(26.596 Ac)

104558

1-3-22 12-7-88

(10.077 Ac)

104563

City of Columbus

Winding Hollow Country Club Co. 10-13-51 12-7-88

15.817 Ac

City of Columbus

Winding Hollow Country Club Co. 1-3-22 12-7-88

WALNUT CREEK

SEC. NO. 1

N-144-BB

(71.20 Ac)

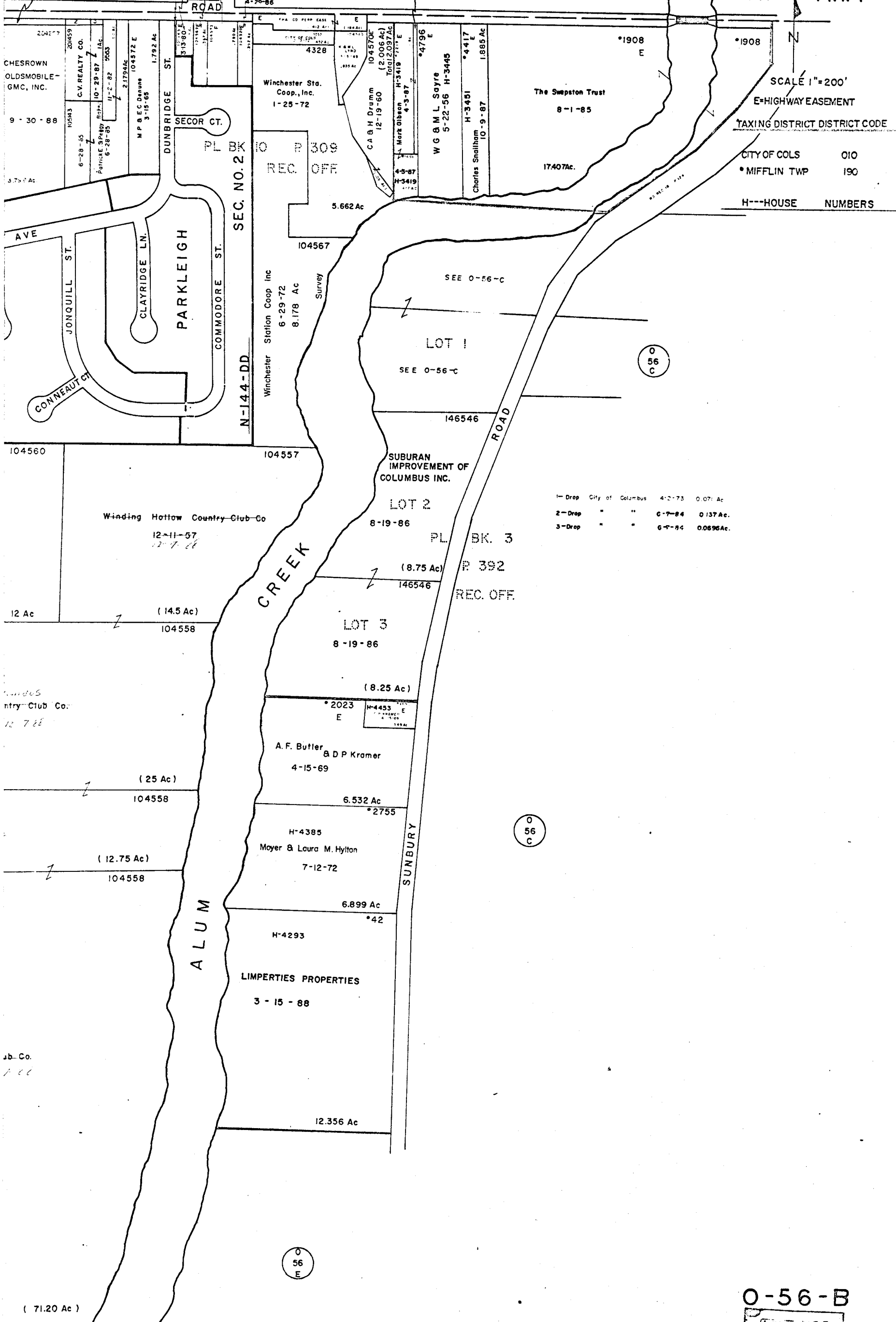
03

BLENDON TWP.

03

O-56-B
MIFFLIN TWP.
R.17 TWP 1

DROP
City of Columbus 11-3-87
C 534 Ac



SCALE 1"=200'
E=HIGHWAY EASEMENT
TAXING DISTRICT DISTRICT CODE
CITY OF COLS 010
MIFFLIN TWP 190
H---HOUSE NUMBERS

1-Drop City of Columbus 4-2-73 0.071 Ac
2-Drop " " 6-7-84 0.137 Ac.
3-Drop " " 6-5-84 0.0896 Ac.

O-56-B

