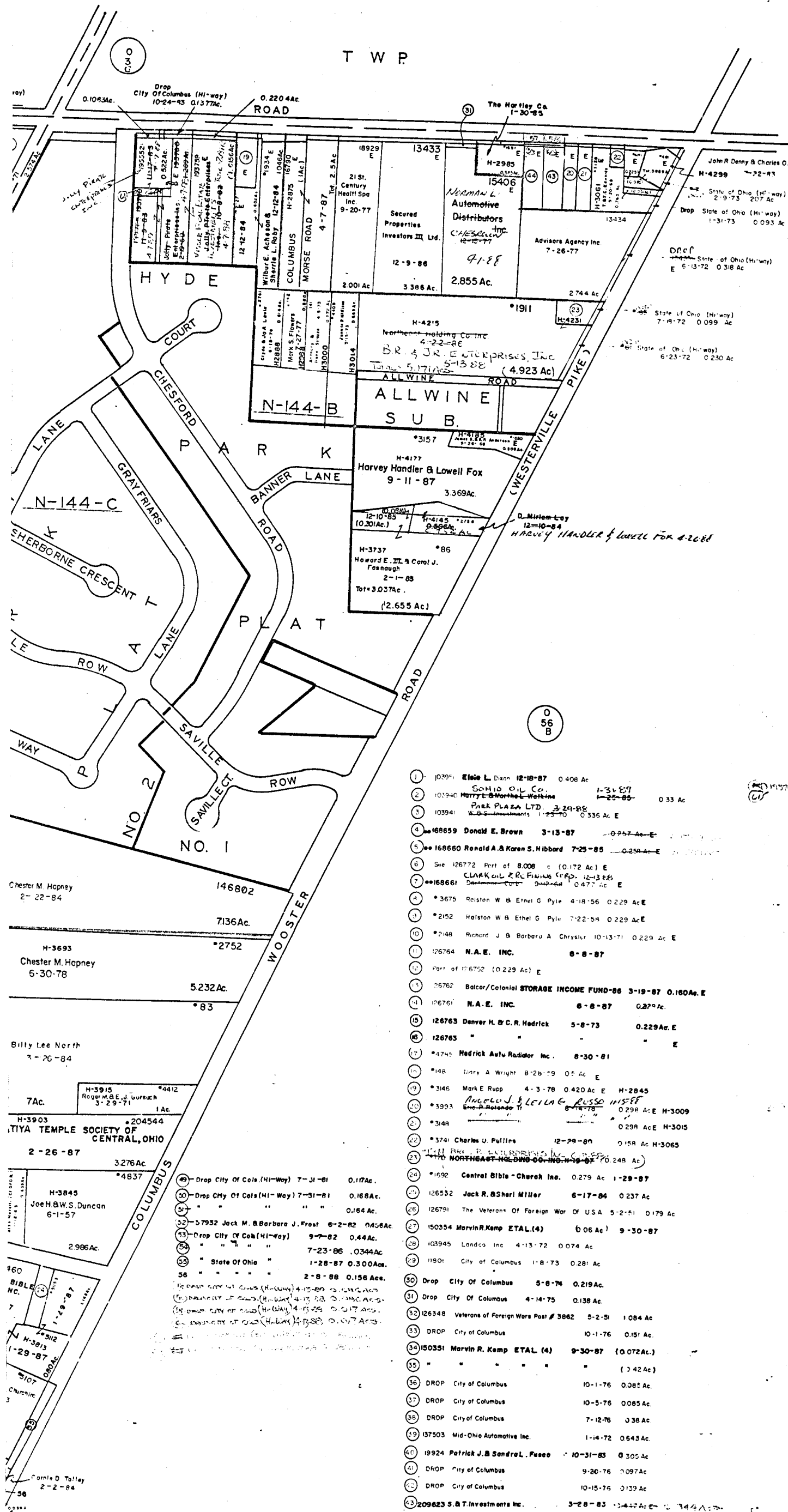


T W P

0-56-A  
MIFFLIN TWP  
R17 TWP1

SCALE 1"=200'  
TAXING DISTRICTS DISTRICT CO  
COLUMBUS 010  
MIFFLIN 190  
COLS-WESTERVILLE S.D. 600  
E=HIGHWAY EASEMENT  
H=HOUSE NUMBERS



- 1 10394 Elsie L. Dixon 12-18-87 0.408 Ac
- 2 103940 Sohio Oil Co. 1-31-87 0.33 Ac
- 3 103941 Harry L. North & Wolkens 1-25-85
- 4 103941 Park Plaza Ltd. 3-24-88 0.336 Ac E
- 5 168659 Donald E. Brown 3-13-87 0.247 Ac-E
- 6 168660 Ronald A. & Karen S. Hibbard 7-25-85 0.259 Ac-E
- 7 126772 Part of 8.008 ac (0.172 Ac) E
- 8 168661 CLARK OIL & REFINING CORP. 12-13-85 0.477 Ac E
- 9 3675 Reiston W. & Ethel G. Pyle 4-18-56 0.229 Ac E
- 10 2152 Halston W. & Ethel G. Pyle 7-22-54 0.229 Ac E
- 11 2148 Richard J. & Barbara A. Chrysler 10-13-71 0.229 Ac E
- 12 126764 N.A.E. INC. 8-8-87
- 13 Part of 10.6702 (0.229 Ac) E
- 14 26762 Balcor/Colonial STORAGE INCOME FUND-86 3-19-87 0.160 Ac E
- 15 126761 N.A.E. INC. 8-8-87 0.279 Ac
- 16 126763 Denver H. & C. R. Hedrick 5-8-73 0.229 Ac E
- 17 126763 " " " " " " E
- 18 4748 Hedrick Auto Radiator Inc. 8-30-81
- 19 148 Gary A. Wright 8-28-59 0.5 Ac E
- 20 3146 Mark E. Rupp 4-3-78 0.420 Ac E H-2845
- 21 3993 Angelo J. & Leila G. Russo H&E 8-18-78 0.298 Ac E H-3009
- 22 3149 " " " " " " 0.298 Ac E H-3015
- 23 3741 Charles U. Pulline 12-29-80 0.158 Ac H-3065
- 24 1692 Central Bible - Church Inc. 0.279 Ac 1-29-87
- 25 126532 Jack R. & Sheri Miller 6-17-84 0.237 Ac
- 26 126791 The Veterans Of Foreign War Of USA 5-2-51 0.179 Ac
- 27 150354 Marvin R. Kemp ETAL (4) 6.06 Ac 9-30-87
- 28 103945 Landco Inc 4-13-72 0.074 Ac
- 29 11801 City of Columbus 1-8-73 0.281 Ac
- 30 Drop City of Columbus 5-8-74 0.219 Ac
- 31 Drop City of Columbus 4-14-75 0.138 Ac
- 32 126348 Veterans of Foreign Wars Post # 3862 5-2-51 1.084 Ac
- 33 DROP City of Columbus 10-1-76 0.151 Ac
- 34 150351 Marvin R. Kemp ETAL (4) 9-30-87 (0.072 Ac)
- 35 " " " " " " (0.42 Ac)
- 36 DROP City of Columbus 10-1-76 0.085 Ac
- 37 DROP City of Columbus 10-5-76 0.085 Ac
- 38 DROP City of Columbus 7-12-76 0.38 Ac
- 39 137503 Mid-Ohio Automotive Inc. 1-14-72 0.643 Ac
- 40 19924 Patrick J. & Sandra L. Fauce 10-31-83 0.305 Ac
- 41 DROP City of Columbus 9-20-76 0.097 Ac
- 42 DROP City of Columbus 10-15-76 0.139 Ac
- 43 209623 S.B.T. Investments Inc. 3-28-83 0.442 Ac E 0.744 Ac
- 44 209624 " " " " " " 0.442 Ac E H-2995 0.544 Ac
- 45 DROP City of Columbus 10-27-78 0.1035 Ac E
- 46 DROP City of Columbus 10-27-78 0.1035 Ac E
- 47 1317 Jack R. & Sheri Miller 6-19-84 0.8287 Ac
- 48 126255 John J. Timlin & William F. Brian 7-7-76 0.0003 Ac

191760 JULY PLATE ENTERPRISES JUNE 4-7-88  
11/21/87 10.0000 AC