

0  
53  
K

T B O C RR (NEW YORK CENTRAL)

Buckeye International, Inc  
1-7-69  
104368  
1-7-69  
3032Ac  
Pr. of 65.4235 Ac

BUCKEYE PARK PL 42 P. 26 7 27.

STAMBAUGH ST  
SOUTHGATE ADD.  
N-148  
ALICE  
MARION  
SUB N-148-B

ELWOOD AVE  
City of Columbus 12-27-76 (To Cor 1-4-77)  
4.6417Ac. 17859  
City of Cols 8-12-70  
13.613 Ac  
112513  
BANK BROTHERS PROPERTIES  
John G. Wilkin  
5-25-79 12-19-88  
8.8943 Ac  
116155

STATE RT. 104  
LEWIS  
LOCK AVE  
SOUTHERN  
N-148  
HTS  
ADD  
Eugene Ley 8-25-50  
3.08 Ac  
113626  
5975 DROP  
2.64 Ac  
City of Cols 2-16-72  
Cr. C. P. 240792  
City of Cols 9-21-70 .94Ac  
43440  
City of Cols 3-12-70  
784 Ac

LLEWELLYN AVE  
WAGER AVE  
CAMBRIA  
AMENDED  
HEIMANDALE  
N-27  
GLENDALE  
AVE  
N-27  
113204  
Alan Levine 4-5-74  
5.60Ac  
112563  
Res. "A"  
N-27

PARSONS ROW  
C & O RR 5-7-30  
(12.04 Ac)  
C & O RR 5-7-30  
116132

GROVEPORT ROAD  
Baltimore & Ohio R.R.  
11-22-74  
3.4 Ac  
112323  
Ben B. Katz  
6-7-74  
1.6132  
2-9-80

Chesapeake & Ohio R.R.  
5-7-30  
Part of 154.35 Ac  
112475  
116150  
6.32 Ac  
Rd Res. LE P 279  
11.563 Ac

Thomas A. McDowell  
4-12-65  
Part of 154.35 Ac  
116131  
1.6132  
116132

0  
55

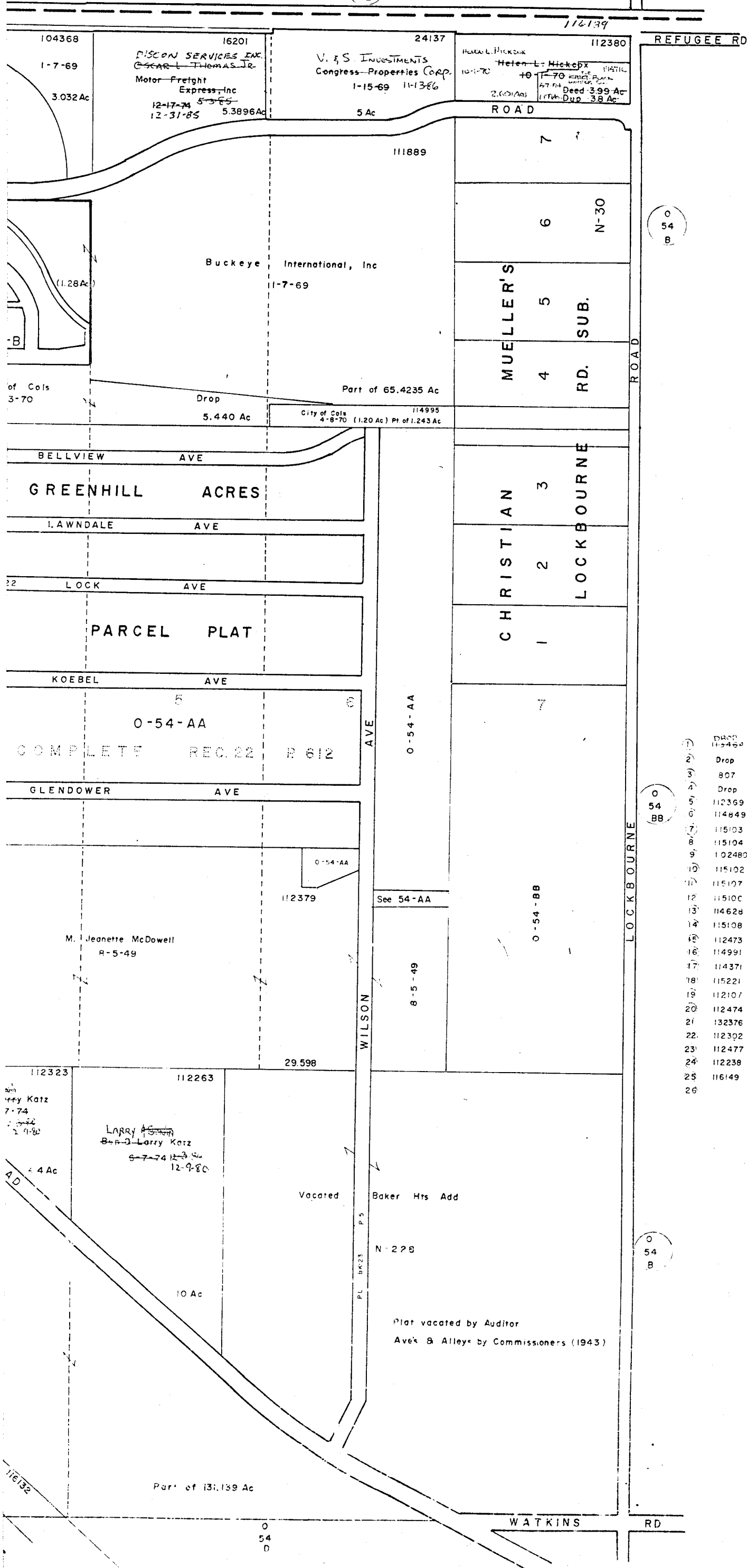
0  
50

0  
54  
D

0  
53  
L

0-54-A  
MARION TWP  
R. 22 TWP 4

SCALE 1"=200'  
E=HIGHWAY EASEMENT  
TAXING DISTRICT CODE  
COLUMBUS 010



0  
54  
B

0  
54  
BB

0  
54  
B

1	Drop	City of Cols	12-27-76	.06 Ac
2	Drop	City of Cols	8-11-70	.09 Ac
3	807	Bessie Cunningham (To corr)	6-17-70	.054 Ac
4	Drop	City of Cols	9-21-70	.040 Ac
5	112369	Chase Foundry & Mfg Co	5-12-76	.57 Ac
6	114849	Ruth Wheaton	10-19-64	.454 Ac
7	115103	Norman Levine et al(3)	12-30-76	.454 Ac
8	115104	"	"	"
9	102480	"	"	"
10	115102	"	"	"
11	115107	"	"	"
12	115100	"	"	"
13	114628	Mark H Levine	6-21-68	.227 Ac
14	115108	"	"	"
15	112473	"	"	"
16	114991	"	"	"
17	114371	Lum Jr & Shirley Blevins	9-3-76	.454 Ac
18	115221	Luther F & Audrey Beaver	3-2-76	.454 Ac
19	112107	Mary & Brady Harr	10-2-79	.694 Ac
20	112474	"	10-2-79	.389 Ac
21	132376	Theano E Ziss	12-5-78	.301 Ac
22	112302	Thos. A. McDowell	4-12-65	.905 Ac
23	112477	"	4-12-65	.905 Ac
24	112238	Earl & Elizabeth Mason	4-8-80	.22 Ac
25	116149	C & O RR Co	12-14-48	.411 Ac
26		County of Franklin	DB 570 P 234 4-20-1915	.313 Ac

0-54-A

772