

24

19

O
46
B

O
46
C

R 21
R 20

WINCHESTER CEMETERY ROAD

Lieberman Family Partnership
11-18-76

••807

COMPLETE RECORD 41-630
COULDT COMMERCIAL BLDG

33

7.1 Ac
Hi-Way Easement

118.79 Ac

Hi-Way Easement
2.42 Ac

••891

Hugh L. Bachman et al
3-C-76
61,294.12,42 ac in
Easement

VILLAGE OF CANAL WINCHESTER

10-6-37

Louis F. Meier
••754
1 Co Ac

15 9888 Ac

25

••799
J.B.L. Bierman
10-3-72
989 Ac

••750
L.V. Meuser
9-15-44
1.314 Ac

WINCHESTER VILLAGE

SECTION 1

••761
6-22-71
61.2 Ac

••746

30

O
46
C

••805

Ralph P. Steen
10-4-72

Part of 27.45 Ac

SARWILL DRIVE

SARWILL DRIVE

OLD MEADOWS CT

National Homes Construction Corp
6-22-71

14 952 Ac

N-6-A

O
46
C

Archie & Mary Bigerton
1-18-65

••838

PIKE

First Healthcare Corp
2-7-86

••343

National Homes Construction Corp
6-22-71

23 2163 Ac

CHERRYDALE N-6 ADD.
SR 674

J.W. & L. Sturgeon
7-14-69

Part of 53.631 Ac.

••813
H.C. Gier
5-30-95

COMPLETE RECORD 6-40
PROBATE COURT

BABY
Y
R
D
T
C
L
O
M
B
A
R
D
H
C
L
H
F
I
C

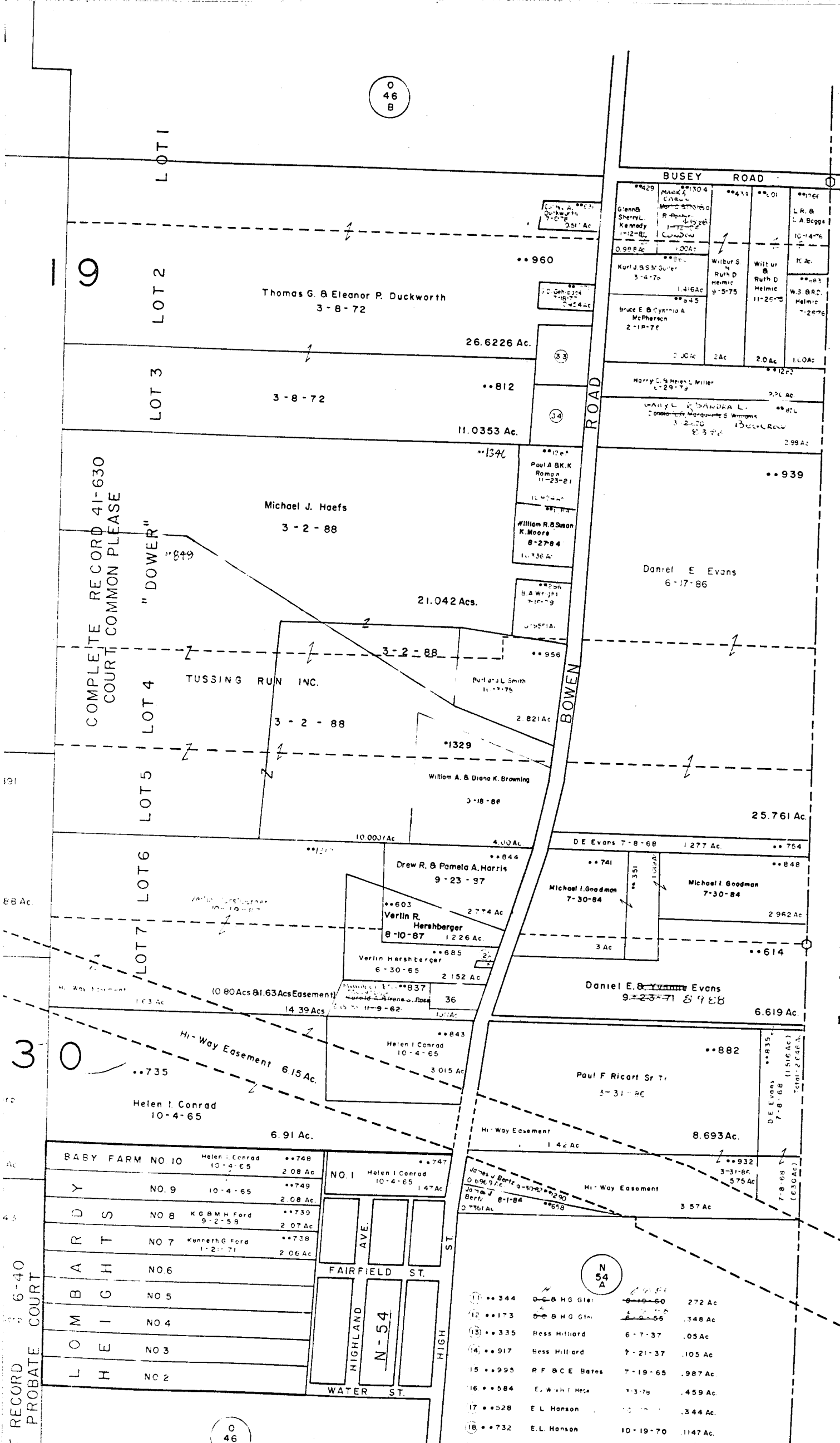
- 1 ••126
- 2 ••550
- 3 ••445
- 4 ••361
- 5 ••471
- 6 ••913
- 7 ••478
- 8 ••496
- 9 ••497
- 10 ••438

O
46
F

O-46-D
MADISON TWP.
R20-21 TWP.11-15



SCALE 1"=200'
E-HIGHWAY EASEMENT
TAXING DISTRICT CODE
MADISON TWP.
CANAL WINCHESTER CORP 184
FRANKLIN COUNTY SURVEY MONUMENTS
H---HOUSE NUMBERS



COMPLET RECORD 6-40
PROBATE COURT

| | | | |
|------------------|-----------------|------------------|---------|
| BABY FARM NO. 10 | Helen I. Conrad | 10-4-65 | 2.08 Ac |
| Y | NO. 9 | 10-4-65 | 2.08 Ac |
| R | NO. 8 | K. G. B. M. Ford | 9-2-58 |
| D | NO. 7 | Kenneth G. Ford | 1-2-71 |
| A | NO. 6 | | |
| B | NO. 5 | | |
| I | NO. 4 | | |
| L | NO. 3 | | |
| H | NO. 2 | | |

| | | | |
|----|----------------------------|---------|----------|
| 1 | Robert J. M. Duckworth | 6-18-81 | 38913 Ac |
| 2 | Columbia Gas Transmission | 9-21-71 | .056 Ac |
| 3 | James M. ... | 8-17-83 | 36487 Ac |
| 4 | Bess Hilliard | 3-31-33 | .28 Ac |
| 5 | Bess Hilliard | 6-13-34 | 207 Ac |
| 6 | Bess Hilliard | 6-7-37 | 06 Ac |
| 7 | Bess Hilliard | 7-21-37 | 258 Ac |
| 8 | W. J. Haycock | 4-2-79 | 1863 Ac |
| 9 | Thomas C. & Faye E. Riddle | 1-30-85 | 1863 Ac |
| 10 | E. F. J. Kempy | 2-8-43 | 207 Ac |

| | | | | |
|----|-----|-------------------------------|----------|----------------|
| 11 | 344 | D. B. H. G. Gier | 8-19-60 | 272 Ac |
| 12 | 173 | D. B. H. G. Gier | 6-9-55 | 348 Ac |
| 13 | 335 | Bess Hilliard | 6-7-37 | .05 Ac |
| 14 | 917 | Bess Hilliard | 7-21-37 | .105 Ac |
| 15 | 995 | R. F. & C. E. Bates | 7-19-65 | .987 Ac |
| 16 | 584 | E. W. & F. Hess | 1-3-79 | .459 Ac |
| 17 | 528 | E. L. Hanson | 10-19-70 | .344 Ac |
| 18 | 732 | E. L. Hanson | 10-19-70 | .1147 Ac |
| 19 | 569 | K. E. & E. S. Groves | 2-27-60 | .346 Ac |
| 20 | 38 | V. J. & J. M. Fleisher | 9-16-66 | .346 Ac |
| 21 | 57 | Gordon D. & Barbara J. Porter | 8-6-85 | 346 Ac |
| 22 | 499 | E. L. Jr. & M. M. Allen | 4-23-77 | 346 Ac |
| 23 | 555 | R. M. & L. M. Alspach | 8-12-71 | .692 Ac |
| 24 | 49 | Genevieve L. Moxon | 5-27-72 | 346 Ac |
| 25 | 504 | Ernest H. & Virginia M. McNe | 11-19-92 | 346 Ac |
| 26 | 509 | P. B. & C. Robinson | 8-5-50 | .344 Ac |
| 27 | 502 | Barbara K. Moore | 10-8-86 | .428 Ac |
| 28 | 762 | C. E. & D. M. McPherson | 11-2-51 | Total: .844 Ac |
| 29 | 744 | R. E. & P. H. Stemen | 10-5-66 | .575 Ac |

| | | | | |
|----|------|-------------------------------|---------|----------|
| 31 | 755 | Meusers Winchester Farm Inc. | 1-2-63 | .836 Ac |
| 32 | 410 | Meusers Winchester Farms Inc. | 2-11-63 | 1.10 Ac |
| 33 | 1006 | G. B. & K. G. Bickel | 12-7-67 | .987 Ac |
| 34 | 841 | Richard J. & Margaret E. ... | ... | .3877 Ac |
| 35 | 345 | Ernie B. ... | ... | 0.474 Ac |
| 36 | 334 | Robert L. & Debra M. Wailes | 9-4-87 | 0.440 Ac |